

Teme TRIANGLE

Clifton upon Teme • The Shelsleys • Lower Sapey



Shelsley residents gathering for Harvest Supper at the Village Hall

In this edition

- * Guides and Rainbows restart in Clifton
- * Goods sought for Afghan refugee hub
- * Remembrance services around the parishes
- * Team Rector farewell plans

plus

- * All your local Christmas event Diary Dates!

Visit the website



www.temetriangle.net

Free to Residents



(L to R) Clifton residents Maurice Richards, Andrea Bennett (licensee of the Lion Inn) and Alan Bush completed the TREK26 Brecon Beacon 13-mile sponsored walk in September. They had a great day out walking across the Brecon Beacons and raised £2,600 for the Alzheimer's Society charity.

YOUR TEME TRIANGLE TEAM

MAIN EDITORIAL MAILBOX
EDITOR THIS ISSUE

editortemetriangle@gmail.com
Michelle Whitefoot

CLIFTON NEWS / WEBSITE

Jerry Johns: 01886 812304
crown.house@polperropress.co.uk

SHELSLEYS NEWS

Michelle Whitefoot: 01886 812779
michelle@whitefootpr.co.uk

Louise Hutton: 01886 812304
louise@stroyd-hutton.com

LOWER SAPEY NEWS

Marion West: 01886 853249
marionjeanwest@googlemail.com

ADVERTISING / SPONSORSHIP

Andrew and Anna Brazier: 01886 887898
teme.triangle@thebraziers.co.uk

Opinions expressed in this publication are not necessarily those of the editorial team. Teme Triangle is not responsible for goods and services advertised. Contributions may be edited at the discretion of the editor.

Front Cover Picture: The catering team behind the enjoyable Harvest Supper held at the Shelsleys Village Hall on 17 October. (L to R) Richard and Judith Bettinson, Des and Beryl Robson, Rosemary Holloway, Margaret Lisseman (whose birthday it was!) and Jane Froggatt. (Report on page 29)

CLIFTON GUIDES, RAINBOWS AND CHRISTMAS FAYRE

The Clifton Rainbows group has restarted on Wednesday afternoons between 4.30pm and 5.30pm, run by Angie Griffiths and Maggie Buono, following a period of inactivity during the Covid lockdown.

Girls aged between five and seven years old (soon to include four-year-olds) are welcome to join the group.

"I'm hoping to run the group at the same time as the Guides, with some of the activities the same but on a smaller scale," says Angie Griffiths

CHRISTMAS FAYRE

The annual Christmas Fayre in aid of the Guides will be held on Sunday 5 December at Clifton Village Hall (WR6 6DN) from 10am until 1pm. As usual, it will be a table top sale by local businesses with a variety of gifts, decorations, cakes, preserves and other tasty treats. Entry will be £2.50, to include a drink and homemade cake.

For more information or to book a table, please email angiegriffiths@aol.com or contact 07957 462519 or @cliftonlocalyocals (£10 per table).

CAN YOU HELP THE 2021 LOCAL POPPY APPEALS?

Remembrance Sunday falls on 14 November this year, and poppies are already available in a number of schools, shops and businesses across the Teme Triangle area.



As Covid restrictions ease, Royal British Legion Poppy Appeal collectors are also heading back out in their local communities to raise vital funds to support the Armed Forces Community – and more volunteers are needed.

SHELSLEYS / STANFORD: Door to door collections are being made in the Shelsleys, Stanford, Stockton, Great Witley and Stoke Bliss areas, and additional collectors in all these areas are being sought. If you would like to be considered, please contact Abberley District organiser Robin Dean on 01886 853295 or email robin.c.dean@gmail.com. "Please help us to beat the collection total last year of £1,574!" he said.

CLIFTON / SAPEY: Poppies are available at Clifton's school, shop, two pubs and at Upper Sapey Golf Club. Volunteers are also still being sought to make house-to-house collections. If you can spare a couple of hours to help, please contact Tenbury Wells District organiser Ian Chell on 01584 819983 or 07977 508881.

NEW BUS SERVICE LINKS CLIFTON TO MALVERN

A new, weekly community bus service between Clifton, Martley and Malvern has started.

A bus will leave Clifton Village Hall every Thursday morning at 9.45am, going on to Martley Village Hall, Berrow Green (Admiral Rodney Pub), Knightwick (Talbot Inn), Suckley Village Hall and Leigh Sinton to arrive in Great Malvern at 10.35am, then Malvern Retail Park at 10.45am. The return trip leaves Great Malvern at 12.30pm and Malvern Retail Park at 12.45pm. (Pick-up times enroute may be slightly adjusted in future months, depending on passenger demand for the service. Passengers will be advised of the pick-up time when they book their seat.)

All journeys must be pre-booked, using a 'Ring and Book' service operated by Tenbury Transport Trust (TTT). To book call 01584 810491 (10am-1pm Monday-Friday). Membership of TTT is also a requirement for all passengers, however, the fee of £5 per annum will be waived for the first year. Timetables are available at www.ttrust.org.uk and from the Parish Council.

NEW AFGHAN REFUGEE HUB IN MARTLEY SEEKS HOUSEHOLD GOODS DONATIONS

An official donation and distribution hub to help furnish homes for Afghan refugees is being set up in Martley, in conjunction with Worcestershire County Council.

Donations are invited that appear on the hub's specific list of wanted items (available on enquiry). Goods include new or second-hand white goods and TVs (preferably PAT tested), sets of kitchen equipment and utensils; lounge, dining room and bedroom furniture (must have fire safety labels if upholstered); bathroom, household and baby equipment. All toiletries, towels, duvets, bedding and mattresses donated must be new. Initially at least, clothes and children's toys cannot be accepted.

Coordinator Eva Fisher confirmed: "We are extremely grateful for goods donations to help this cause. However it is vital that all items are on our list, and that they are either new; or clean, undamaged, working secondhand. As the size of the properties we aim to furnish differs hugely, we cannot accommodate very large furniture. Please check with us first to ask about our current priority items. Thank you very much in advance for your generosity."

Once a rota is set up, donations may be left at Martley Old Infants School on Berrow Green Road, Martley WR6 6PJ (opposite Maylite Trading Estate). If you would like to volunteer to help please contact Eva at donationhubmartley@gmail.com or 07954 133176; or Stuart Smith on 07412 977849.

Alternatively, people could sell privately any items that the hub is unable to accept, and donate the proceeds in the form of gift/store vouchers for supermarkets or household goods shops. Cash donations to the cause cannot be accepted, but could be made online via sites such as <https://donate.redcross.org.uk/appeal/afghanistan-crisis-appeal>.

COUNTY INITIATIVE HELPS PEOPLE ‘STAY CONNECTED’

In the wake of the pandemic, Worcestershire County Council is encouraging people of all ages to take simple steps to feel more connected – even at a distance – as part of a drive to tackle loneliness across the County.



A raft of information has been put together suggesting ways that residents can address feelings of isolation, whether by talking to others, making social connections, volunteering, finding new activities or prioritising self-care. There is also proactive advice for young people who are feeling lonely, including finding support and ways of boosting self-esteem.

The Council has also launched the ‘Stay Connected’ pledge that Worcestershire organisations can sign up to, to ensure their activities are inclusive, welcoming and connection-friendly. Suggestions include arranging transport, taking activities into the community or online, inviting people to volunteer their skills and doing Making Every Contact Count e-learning. Participating organisations will receive signposting information and e-learning access, and will be listed on the Worcestershire Health & Wellbeing webpage.

For details visit www.worcestershire.gov.uk/info/20526/lonelinessandisolation.

CLIFTON-UPON-TEME PARISH COUNCIL

Parish Council Vacancy

Would you like to support your local community? Do you have an interest in local matters? If so, you might consider becoming a Parish Councillor! We currently have a vacancy on our Council and would like to hear from anyone interested in joining us.

Please email the Clerk at clerk@clifton-upon-teme-pc.org.uk or ring 01886 884195 for further details about the role and how you can apply. We look forward to hearing from you!

NOVEMBER SHELSLEYS PARISH COUNCIL MEETING

Change of Date

This meeting will now take place on 16 November, and not on 9 November as previously stated in the Minutes.

NIC SPROSON THE OPTICIAN

Contact Lens Specialists

* Patient Car Park *

52 Barbourne Road, Worcester

Tel: 01905 27327

www.nicsprosontheoptician.co.uk

David Ward firewood

Do you need a dependable consistent quality supply of seasoned or kiln dried hardwood and softwood firewood?

Cut and split to suit and delivered in breathable 1.2-cubic metre bags, so no need to restack.

Small delivery vehicle, fitted with crane, can deliver to most locations and situations.

CALL DAVID TO DISCUSS YOUR REQUIREMENTS:
Mobile: 07866 441154

enhanced movement

studio

WWW.ENHANCEDMOVEMENTSTUDIO.CO.UK

pilates

MONDAY 8:30AM
TUESDAY 6:30PM
THURSDAY 8:30AM
THURSDAY 6:30PM
STANFORD BRIDGE
VILLAGE HALL

OUTDOOR PILATES

EVERY FRIDAY
(WEATHER PERMITTED)

NEW LOCATION
EACH WEEK
PLEASE GET IN TOUCH
IF YOU ARE INTERESTED

OR JOIN VIA ZOOM £8/SESSION

couch to 5k

PLEASE ENQUIRE ABOUT NEW DATES
FOR 'RUN CLUB & IMPROVERS CLUB'



07989 535 757 emg



The Apple Tree Kitchen

01886 812 431
WR6 6DX

Set in the beautiful grounds of Pitlands Farm Holidays

| Fully licensed | Breakfasts | Lunches | Cakes | Coffees |
| Afternoon Teas | Gardens & Grounds |
| Children's Play Ground |
| Function room available with catering
for every occasion |

Open Thursday - Sunday 9:30am - 5:00pm

www.theappletreekitchen.co.uk
info@theappletreekitchen.co.uk

Meadows Soft Furnishings

by Tracey Birks

Bespoke handmade curtains, blinds,
soft furnishings and lampshades
designed and made for you

No obligation home consultation

tracey@meadows-soft-furnishings.co.uk
www.meadows-soft-furnishings.co.uk
01886 812583 or 07831 818104



Chloe's Gleaming Window Cleaning

'A friendly local service based in
Clifton on teme'

Call or text Chloe on



07809 469 152



A.M. JONES

**Harpley Works
Clifton-on-Teme**

- MOT Repairs
- Servicing
- Accident Repairs
- Tyres
- Batteries
- Exhausts

Tel/Fax: 01886 853 530

Mobile: 07970000881



**WHATLEY WESTON & FOX
SOLICITORS**

**Specialists in Wills, Inheritance Tax
Planning, Administration of Estates,
Powers of Attorney and Court of Protection**

Our solicitors are approachable and friendly
Home Visits if required
To arrange a friendly and confidential
consultation contact

**Clare Burden formerly of
Worcestershire Wills Or Philippa Pipe**

Accredited Member of Solicitors for the Elderly

On 01905 731731
Or email c.burden@wwf.co.uk or
p.pipe@wwf.co.uk

Website: wwf.co.uk
15 & 16 The Tything, Worcester WR1 1HD
For all your legal needs including
Conveyancing, Employment, Civil Disputes
and Family Law

**Professional Dog
Walking
& PetCare Services.**



www.petsadventures.com

Contact Ruth on: 07736151130 or
email: ruth@petsadventures.com

We are delighted to offer the following
services in the WR6 area:

- Professional Dog Walking
- Dog Home Boarding
- Doggy Daycare
- Pet Companion & Home Visits
- Pet Taxi Service
- Chicken & Small Animal Boarding



A. H. CALDICOTT & SONS

Funeral Directors

15 MARKET STREET,
TENBURY WELLS, WORCESTERSHIRE
TELEPHONE: 01584 810281
FAX: 01584 811420

*A family
run business
established 1919*

*Burials
Cremations
Chapel of Rest*



- Woodburning & Multifuel Stoves
- Stove Spares & Repairs
- Glass, Ropes, Bricks, Baffles, Cleaners
- Chimney Liner Kits & Flue Pipes
- Kiln Dried Logs, Kindling and Firelighters

01886 812452
www.is-stoves.co.uk

Showroom & Online Shop

Steps Farm
Clifton Upon Teme
Worcester
WR6 6EN

JEREMY MASSEY

Qualified Electrician



Registered
Electrician
– BS7671

- ✓ Household Electrical work
- ✓ Fast, Reliable & Friendly
- ✓ Very high standards met
- ✓ Inspection & Testing

Contact: 01886 888493

AQUA CLEANSING Ltd

SEPTIC TANK EMPTYING

- Cesspool & Pump Stations
- Soakaways
- Blockage Clearance
- Sewage Treatment Engineers
- Pumps, Compressors & Servicing
- CCTV Drainage Surveys



www.aquacleansingltd.co.uk
enquiries@aquacleansing.co.uk

Call us now for free advice & quotation

01886 888471

Berrow Green Road, Martley, Worcester WR6 6PQ

Fast reliable service established for over 30 years



Samantha Louise Hairdressing

01886 889248

Hairdressing and Barbering salon now open in Martley
next to the Maylite trading estate

Senior Citizen discount available on a Wednesday starting
from the 1st March 2020

Late Nights Wednesday and Thursday's until 8pm

Telephone the salon for all appointments and enquiries

THE MANOR ARMS

ABBERLEY



Open 12pm -11pm Every Day
Call 01299 890300



A beautifully refurbished traditional village pub with locally
sourced fresh food and ales.

*Our Head Chef sources top quality local ingredients to create
traditional dishes and exciting specials.*

Overnight stays in our beautiful rooms, available this Autumn!

*You and your guests can be sure of a warm welcome, we look
forward to seeing you soon.*

*Free function room available for local clubs, meetings,
special events and parties.*

The Manor Arms Inn, Abberley Village, Worcestershire WR6 6BN

www.themanorarms.co.uk

Follow us on Facebook and Twitter for news and events.

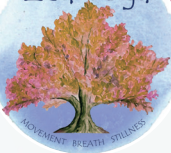


The Manor Arms Inn Abberley



ManorArmsInn

Zed Yoga



Yoga combines physical movement
and breath in a unique way that
can help to reduce stress and
increase well-being, while enhancing
physical flexibility.

New Yoga Class at
Eastham memorial hall
Suitable for adults of all ages
Booking now open

For more information or to book please contact Zoe Herington:

www.zedyoga.co.uk
tel: 07962 981456





Feet First

Foot Health Clinic

Treatment for: corns, callus, cracked heels, verrucas, fungal infections, ingrown toenails. Orthotic insoles specialist.

Ground floor clinic just outside of Bromyard with onsite parking. Home visits available.

Helping to keep people on their feet for over 11 years!

Tel: 07580160997

PHIL GRAY Dairyman / Newsagent

National... Daily... Sunday & Local Papers

... Magazines... All Milk...

... Dairy Products... Eggs... Soft Drinks

... & Waters etc.

Let your Milkman do the Walking

01584 881385 / phil@eardiston.com



Visit us at Mill Farm, Stanford Bridge,
for beauty and holistic treatments

Please call for an appointment or more
information on **07964 176747**
www.purethyme.co.uk

Aston Bookkeeping Services

Whatever the size of your business we can offer ad hoc or regular bookkeeping services in Worcestershire. Anything from basic bookkeeping, VAT, payroll & pension to accounts preparation.

Call Gemma to discuss your needs on
07506 972323 or email
gemma@astonbookkeepingservices.co.uk

Wichenford Mole Man

- **Call - 07855 674760**
- *Problems with Moles in the garden*
- *Professional, Reliable & Discreet*
- *Traditional methods only used*

C.L. GIBBS BUILDERS

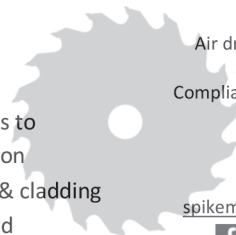
**EXTENSIONS • ALTERATIONS
PLASTERING • UPVC WINDOWS
ROOFING • TILING • LANDSCAPING
FASCIAS • GUTTERING • STONE WORK**

For all types of building work call your local family builder for advice and free estimate

**01886 812 450
07905 396 971**

SPIKE MILTON TIMBER SERVICES

- Forestry
- Tree surgery
- Mobile sawmilling
- Sawn timber supplies to individual specification
- Oak beams, fencing & cladding
- Timber bought & sold



FIREWOOD

Air dried barn stored logs & kindling
Seasoned & ready to burn
Compliant with DEFRA recommendations
Free delivery to local area

07773 428701

01886 853773

spikemiltontimberservices@gmail.com

 Spike Milton Timber Services

CLIFTON'S CAROLS ON THE GREEN

The third annual Carols on the Green will take place in Clifton on Friday 17 December, from 7pm. Music will be provided by the Worcester Ukulele Band. Mulled wine and mince pies will be available from the Lion Inn. Take away fish and chips can also be ordered from the pub.

Volunteers are needed to help set up on the afternoon (from about 3.15pm after school finishes) and to clear away afterwards. If possible, we need a couple of gazebos and outdoor lights (industrial ones). Contact Mandy Henry: 01886 812238 amandajhenry1970@gmail.com.

CLIFTON WI NEWS

In September the WI members were entertained by Paul Spelman, from the Conquest Theatre in Bromyard. The original theatre started seventy years ago in a corrugated structure with old seats donated by the Regal Cinema in Tenbury Wells. It was later replaced by the current brick structure next to the CO-OP. Brinton Carpets of Kidderminster donated an end roll of carpet from a cruise liner...enough to cover the whole of the area, foyer, auditorium, backstage, changing rooms and more. The only paid member of staff is the cleaner all other roles are filled by volunteers. The autumn programme will include The Little Shop of Horrors, MET live and streaming of Follies The Musical. Support your local theatre!

Our next meeting on Tuesday 9 November will be our AGM and will include a quiz based on the questions asked when applying for British Citizenship...rumour is they are very difficult!! Please join us if you are interested.

Friday 19 November is the Women's Health and Wellbeing Evening. A chance to relax with Prosecco and tasty nibbles while finding out more about health issues such as cancer and how it can be identified and treated to maintain health and wellbeing. This year's WI Resolution concerns raising awareness of ovarian cancer which continues to be one of the least detected cancers in women but can be treated successfully. The evening will include several guests talking about their experiences of cancer, exercises to improve health and posture, a range of cosmetic stalls and more. Tickets are available from members of the WI committee: Penny Bowden, Martine Jones, Nina Gilbert, Lyn Emery and Ruth Wilson. Please contact cliftonontemesec@wfedwi.org.uk for more information about the WI.

Ruth Wilson

WOMEN'S HEALTH & WELLBEING EVENING

Friday 19 November 7.30pm
Clifton upon Teme Village Hall
Tickets £5 from cliftonontemesec@wfedwi.org.uk
Prosecco and Nibbles

EVENTS AT SHELSLEYS SOCIAL CLUB AND VILLAGE HALL

WR6 6RA Tel 01886 812121

BINGO

Saturday 6 November and Saturday 20 November
Eyes down 7pm



COUNTRY AND WESTERN NIGHT

Saturday 11 December, 8pm
Live country music with Tony Hughes and Em Jay
Dancing. Food from our menu
Early bird tickets £5 adults, £2.50 under 18s (but £1 more on the door on the night), under-10s free
Call 01886 812121 for tickets.



CHRISTMAS FAYRE

Saturday 27 November 10am - 4pm
A few stalls still available at very good rates
For more details please call 01886 812121
To reserve a place please contact Jane Froggatt on 01886 812 215.



TALK: THE HISTORY AND MODERN ROLE OF THE SAS

Tuesday 9 November, The Shelsleys Village Hall

Last few tickets remaining for a talk on 'The History and Modern Role of the SAS' by local man Mark Skipp, who has over 20 years of military experience. Q&As taken at the end. The Hall and cash bar will be open from 7.30pm, with the talk starting at 8pm. Tickets £20 (including complimentary wine or soft drink on entry) in aid of All Saints Church, Shelsley Beauchamp.

ENTRY STRICTLY BY PRE-ORDERED TICKET (NB now a one-off event only)
To book contact David Moore by text or WhatsApp on 07980 271703

RURAL REELS IN CLIFTON

Next month's film screening in Clifton Village Hall will be Knives Out in which Daniel Craig stars as a detective investigating the death of a patriarch of an eccentric, combative family. The film will be shown on Saturday 27 November. Doors open at 6.30pm for a 7pm start. The bar will also be open. For further information or to reserve a seat please contact Mandy Henry: amandajhenry1970@gmail.com or 01886 812238.



MILL FARM COUNTRY RETAIL NEWS

MRS BEST'S '3rd BIRTHDAY' SHOPPING EVENT

Mrs Best Paper Co. at Mill Farm Country Retail, Stanford Bridge, is celebrating its third birthday this month with an exclusive shopping event on the weekend of 27 and 28 November.

Owner and graphic designer Sarah Best said: "We are a small, independent card publisher producing creative designs which we sell online, in our store and throughout the UK. We also stock a whole host of curated gift brands.



Owner Sarah Best (L) and retail assistant Deb outside the store

"In celebration of our third anniversary, we'd love customers and suppliers old and new, to join us on Saturday or Sunday for a glass of fizz – plus we'll be offering an exclusive 10% off purchases of £30 or more. Our birthday celebrations are a way of saying thank you to the wider community for helping us grow!"

For more about the shop visit www.mrsbest.co.uk.

Other stores at Mill Farm will also be open on 27 and 28 November in support of Mrs Best's event, providing the perfect opportunity to get into the Christmas spirit and support the local community. Please note that booking is advisable if you wish to dine at the Den Café Bar.

NEW WELLBEING SERVICES AT PURE THYME

Pure Thyme Wellbeing & Beauty, at Mill Farm Country Retail in Stanford Bridge, is offering a host of new services this season.

Owner Julia Heywood has been training in Oncology Massage in order to provide massage treatments to clients living with or recovering cancer. Julia explained: "Therapists working in salons and spas often have to turn away clients who are undergoing treatment or living with cancer, due to it being a contraindication to massage. The therapist would need to seek written approval to treat from a client's GP or consultant."



Julia wanted to make massage more accessible for her clients and having completed her Oncology Massage training with Jennifer Young, Julia is now able to offer adapted massage to clients without them having to get medical approval should they not wish to. Gift vouchers are available and the salon will be stocking a small range of products which are safe and help tackle some of the skincare issues associated with cancer treatment.

In addition, on Saturday 13 November, the Pure Thyme salon is hosting an Aesthetics Clinic, run by Sophia Alexander. Sophia is a registered nurse and independent prescriber. She has been practicing aesthetics for eight years and has recently set up a clinic in north Worcestershire, with several other nurses working for her. Sophia's background is intensive care, respiratory and lung cancer nursing. She specialises in filler correction and offers a wide variety of aesthetic treatments including anti-wrinkle injections, lip and cheek filler, jawline contouring, Profhilo, fat dissolving and semi-permanent makeup.



Sophia Alexander

Maia Haywood also runs the Beauty Room part-time out of Pure Thyme Wellbeing & Beauty. Maia offers beauty treatments and specialises in acrylic nail extensions and lash extensions.



CLIFTON HILL IN AUTUMN

"I have driven through Clifton for nearly sixty years and never tire of the view as you drive down Clifton Hill. This is just one aspect of its magic," says Harpley resident Jane Dallow.

WHITE MIST

The river valley
 White mist rising up in soft waves
 From the river bank
 Little wisps of whiter than white,
 Swirling like angels ascending the
 heavens

Tree tops black against the white,
 Rootless floating in suspended
 animation.
 Dark shapes looming

In a magic surreal world
 Of black and white.
 Enter the valley of Shadows
 Disappear into the White mist
 Become part of it for a time
 Climb the hill, look down,
 See a swirling scene of illusion
 Like a conjurer's trick,
 Beautiful but transient,
 About to disappear at any moment

Jane Dallow



HUNTLANDS FARM BED & BREAKFAST AND UPHOLSTERY

www.huntlandsfarm.co.uk

Tel: 01886 821955 / 07828 286360

OFFERS:

upholstery classes • upholstery commissions
en suite b&cb accommodation • wedding venue
all in an idyllic, rural setting on a working farm.
And a self-catering, 6 bedroom farmhouse on an
adjacent farm, www.moorhallfarm.co.uk

*Your hosts, Lucy, a custom upholsterer and
Stephen, a passionate cook, guarantee you a comfy
stay with freshly prepared, local food to enjoy.*

WRIGHT CUT GARDEN & LANDSCAPING



- Decking specialists
- Garden fences
- Wooden gazebos / pergolas
- Sleeper beds / steps
- Shed roofs
- Plus much more

**No job too small
Any job considered, please
ring for more information.
DBS checked and references
available
07940 704 864**



MARTLEY OSTEOPATHS

**Do you suffer from back and neck pain?
Do you need help with a sports injury?**

Call us now on 01886 889 002

Let our team of expert practitioners help you
recover and get pain free

www.osteopathiccentre.co.uk

Osteopathy - Sports Massage Therapy



**Martley C E Primary
Pre School**



**Monday to Friday
9am-3pm
Ages 2-5 years**

**Breakfast Club 8-9am
After School Club 3-6pm**

Pre-School
2yr old £15.60 (per session)
3-5yr old £12.60 (per
session)
Sessions run from:
9am - 12pm & 12pm - 3pm

Ages 3-11 years

01886 889127

Wrap Around Care
Breakfast Club and
After School Club runs
from 3.00 pm - 6.00 pm
Monday to Friday
The cost is £2.75 per 30
minute session

*Registered for two to five year old funding and 30 hour extended
entitlement funding*

www.martleyceprimaryschool.co.uk

jls115@martley-pri.worcs.sch.uk



Ombersley Family Dental Practice

Mrs. Andy Wright B.D.S. (Edin)

A friendly private practice specializing in preventive dental care for all the family in a happy relaxed atmosphere



Andy is now joined by
Dr Duncan Powell
New patients welcome

Cosmetic treatments including tooth whitening
Orthodontic treatments using Invisalign or
FastBraces systems

Sports gum-shields for all ages in
various colours and designs
Same day emergency appointments
Large car park

Racks Lane, Ombersley, Nr Droitwich,
Worcs., WR9 0EN
Tel: 01905 621881
www.ombersleyfamilydental.co.uk

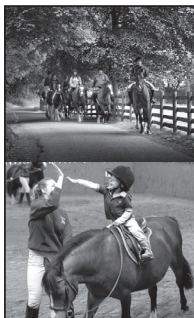
SERVICED OFFICES AND WORKSHOPS AVAILABLE ON FLEXIBLE MONTHLY TERMS ALSO SMALL INDUSTRIAL UNITS

www.maylite.co.uk

Please contact Kate Shrubbs on
01886 888455 for more details

MAYLITE Business Centre

**MAYLITE TRADING ESTATE,
MARTLEY WR6 6PQ**



Fabulous horse riding experience
in wonderful countryside for adults
and children of all abilities, family
groups welcome.

Riding lessons and horse care
courses in the holidays.
Beginners welcome.

Tiptonhall.co.uk
Tel: **07792 358742**



Offering quality childcare
and
pre-school education
For 0-5 year olds

Open 7.30am – 6.00pm
Experienced qualified staff
Flexible hours
Ofsted Registered
Nursery Education Grants available

Also offering job opportunities for
professional, committed staff
looking for support in their
career development.

For further details,
please telephone the Manager
at the Centre 01886 812380
The Village, Clifton-upon-Teme,
Worcester WR6 6DE.



K.B. CATERING

TAILOR MADE QUALITY MENUS FOR
ALL YOUR CATERING NEEDS

Dinner/Cocktail Parties, Weddings & Corporate Functions etc.

Kit Bamford

15 Great Crocroft, Pershore, Worcester WR10 1QS
0780 1699597 / 01905 349849
Email: kitbamford@live.co.uk
www.kbcatering.co.uk

SHELSLEY WALSH HILL CLIMB REPORT 2021

by Toby Moody, Motorsport Commentator and member of the Shelsley Walsh Organising Committee

We've had a great season at Shelsley Walsh with events on the hill and a wealth of new, mainly under-21 members, joining in to be part of the Midland Automobile Club. On track many didn't drive last year, so came back out in May for the first time; but there's been a step change in the cars and the technical ability of them in recent years so there was always an eye on the best-ever time up Shelsley to be beaten from 2008. That's the longest ever standing record on the hill that was first used in 1905, but a testament to the speed of Martin Groves, a four-time British Hill Climb Champion, who set it.

A thrilling start

We were not disappointed with the speed of the cars as the 2021 season kicked off, after some thrilling times being set at the back-end of 2020 that were only a tenth of a second away from the ultimate prize on the hill. May saw Tenbury's Alex Summers win, but come June and the British Championship meeting, the reigning British Champion Wallace Menzies asserted his position to keep the number 1 plate, something that carried through to the August weekend when he was the first to take that outright hill record away from Martin Groves. 22.58 was now 22.55 seconds, but the next car on the line was Sean Gould who had a similar car to Menzies but a slightly bigger engine. He left the line and there were genuine gasps from the crowd as he exited the first corner as his tyres were right up against the bank.

Further up towards the Esses the commentator couldn't get the words out quick enough, but the time split to that Bottom Ess corner was indicative it was going to be something special. It was with 22.37 seconds, and with it a roar from the crowd normally reserved for a football match. Shelsley had never heard such a noise nor seen such speed. Alex Summers was the next car up as the fastest man in 2020 and try as he may, he beat the existing record from 2008 but not quite the new record from half a minute earlier as he sped to 22.52; just 0.15 seconds in it.



Nicola Menzies, fastest Lady ever up Shelsley Walsh

Outgoing record holder Martin Groves said, "I'm glad it went with a good fight".

During the second run off it was a bit cooler and the speed wasn't quite in the hill but that makes it even more impressive that Nicola Menzies took the Ladies' record with 24.70 seconds, taking 0.04 off the previous Ladies record from Sue Young that was from 2007!

Classic Nostalgia

Classic Nostalgia was a tremendous success, with the mid-July weekend almost too hot for many to cope with. We ran out of water in some places, as the UK boiled itself with 33 degrees being recorded in Worcestershire.

George Brown – a third-generation driver on the hill – was quickest on both days in the family-run Mallock sportswear, but it was more about the fun had on the hill and around the paddock that was open for all spectators for the very first time since September 2019.

Robin Shute had grown up coming to Shelsley with his father, but has carved out his own name in International Hill Climbing as a Brit who has been Stateside for some years as a professional racing driver, and now won the Pikes Peak International Hill Climb twice following his win in June this year. It is nothing short of a pleasure to have the winner of 'The Peak' here in Worcestershire driving the oldest motorsport venue in the world. Pikes Peak is 12.4 miles in length with 156 corners, but there is an element of pace needed on the Colorado hill compared to Shelsley's explosive non-stop blast; but Robin drove brilliantly in a specialist lightweight hill climb car for the first time, with his pro driving skills showing many the way.



Sean Gould – the outright Shelsley Walsh record holder and 'King of Shelsley' – drives the GR59 4 litre V8 Judd

Charity round-up

We have had collections made over three weekends on the hill, with over £1,700 going to the Air Ambulance, nearly £600 going to St Andrew's Church and a healthy amount (yet to be counted) for St Michael's Hospice in Hereford over the September 19 weekend. We have also given time free of charge in the paddock and on the hill for other charities and for those who are not in as fortunate position as ourselves.

Local involvement

We at Shelsley Walsh are looking to start a group in the valley for people to be included more into the ins and outs of the hill and what we do. We were present at the last Parish Council meeting on September 14 where we listened to all the comments and proposed immediate changes to noise and sheer numbers of people coming into the valley. We have listened and have reacted immediately to reduce the unrest some events bring, and we will let you know more as we progress through the off season.

However, overall Shelsley Walsh has had a successful year with increased membership and new spectators coming to the hill to experience things close up and see the thrill of modern hill climbing, the cars, the people and the atmosphere; whether at an event or a Breakfast Club or a Cars in the Valley on a Thursday evening.

We also thank the Teme Valley for the double rainbow that was put on at the end of the last competitive day in September. It really was quite something!



TALKING TURKEYS

BALDWINS TURKEYS

Baldwins Farm in Shelsley Beauchamp is taking Christmas orders for its traditional white and classic bronze turkeys.

“My father (Dinty) started growing turkeys for Christmas in 1967,” said farmer David Moore. “All our turkeys come in as ‘day old’ poults. We have been lucky over the years to have been supported by many local customers. We also supply butchers from Craven Arms to Ludlow, and as far south as Studley.”



To order please contact David Moore on 07980 271173 or 01886 812482.

GOODMAN’S GEESE AND TURKEYS

Christmas turkeys and geese from Goodman’s Geese, near Great Witley, are selling fast. “The birds are growing well, and orders this year are coming in thick and fast,” confirmed Andrew Goodman. “We advise customers to order very soon to avoid disappointment.”

Goodman’s 500 acre farm rears free range, oven-ready geese and bronze turkeys that sell nationwide. This season, geese from 4kg to 6kg, bronze turkeys from 4kg to 9kg and turkey crowns are ready for Christmas orders; all boxed with fresh herbs and a recipe leaflet.

Visit www.goodmansgeese.co.uk, email sales@goodmansgeese.co.uk or call 01299 896272.



LOWER SAPEY NEWS

Are we really into November already? As I write this in October, the shops are full of Halloween costumes and pumpkins and these have replaced the Christmas adverts which seem to have been there for ever. I can't understand the habit of following the USA with their festivals. Soon we shall be celebrating Thanksgiving! I used to love Bonfire Night (November 5) and at least it relates to our own history. We may well have a bonfire locally, properly organised of course and to be enjoyed by everyone.

The trees are very slow to change colours this autumn because of the dampish summer, but they are just beginning to look glorious, especially the chestnuts. The squirrels are busy burying all the sweet chestnuts from my trees, which are too small for us to eat and they are taking away the conkers as well. Do they actually eat them? The weeks are certainly rolling by quickly. 'If Winter comes, can Spring be far behind' (Shelley), so we must forget the fuel crisis, the food shortages (pigeon this year for Christmas?), lack of HGV drivers and butchers and concentrate on spring and a better future. Sadly, we will be another year older!

We in Lower Sapey and Harpley do look forward now to St Bartholomew's Church being fully repaired and being used for our services in the spring. Work on the roof started on October 1 and repairs to the ceiling and stonework will then follow. Funds for this essential work are slowly increasing, thanks to Candy's hard work and we are ever hopeful of reaching the required amount soon. You can see an update on the Lower Sapey web page which is <https://lowsapey.wordpress.com>.

Also try looking at the sustainable church flowers page: <https://suschurchflowers.com>. Our own eco-expert Shane was actually discussing this with the Bishop recently and was also interviewed on BBC Radio 4 one Sunday morning.

We are having our next churchyard clear up this month to keep it tidy over the winter. We are all of us getting older and less mobile and diminishing in numbers and looking for help, maybe from some young farmers or other active young people. It would be so appreciated. Tea, coffee and snacks are provided usually.

Our pop-up choir has been asked to sing at Shelsley All Saints in December and also at the December Shelsley Hillclimb, so we are soon to start rehearsals again. We all enjoy singing and hope that it doesn't sound too bad. At our choir rehearsal on November 29, we are also blessing the nativity shapes in the churchyard for Christmas.

Of course, sadly, we are saying goodbye to David Sherwin and his family at the end of November with his final service on November 28 at Martley (10.30). All are welcome. We hope they have a long and happy retirement in lovely Rhayader.

NOTICES

- The service of Remembrance will be at St Bartholomew's at 10.30 on November 14
- There will be no Circle Service as it is David's last service at Martley on November 28, 10.30
- There will be a PCC meeting on November 1 at 4pm. Venue to be arranged
- Please check for any changes elsewhere in this edition
- The Ladies Bible Group will meet on Tuesday November 9. Venue also to be arranged
- The Mobile Library calls on Friday 19 November at 10.20 and 10.40am

Have a healthy and happy November.

Margaret Griffiths

SERVICING & REPAIR ALL TYPES OF GARDEN MACHINERY



BRIAN BUTLER

Clifton-on-Teme
07929 014804 Daytime
01886 812538 Evening

COLLECTION and DELIVERY



**NICK
CHAMPION**

PROPERTY | AUCTIONS | AGRICULTURE | PROFESSIONAL

**YOUR LOCAL PROFESSIONAL,
INDEPENDENT RESIDENTIAL &
RURAL PROPERTY SPECIALIST.**

- SALES
- AUCTIONS
- LETTINGS
- ACQUISITIONS



NICK CHAMPION LTD

16 Teme Street, Tenbury Wells, Worcestershire, WR15 8BA
Tel: 01584 810555 | Email: info@nickchampion.co.uk
www.nickchampion.co.uk

PC Troubles?

- PC problems solved
- Broadband connection set-up
- Home network set-up
- Printer and camera problems solved
- Website design service
- Basic PC training at home



*For friendly and local advice and to
book a free consultation contact*

Bernadette Higgins on 07813 302 504
or e-mail: apctrouble@gmail.com

LUXURY CATTERY

Call Lesley on 01886 821154

- New luxury Cattery set in beautiful open countryside. Run by genuine cat lover.
- Fully Licensed and Insured.
- All chalets have heated bedrooms and spacious play runs.
- Special needs and diets catered for.



Kitty's Cattery

Coronation Cottage, Broadwas (Nr. Martley), Worcester, WR6 5NT
www.kittycattery.co.uk kittycattery@hotmail.co.uk

TAYLORS CONSERVATORY CARE



Office: 01886 812424
Joe Taylor: 07801 281821
Richard Taylor: 07850 424782
joetaylor@cc@hotmail.co.uk
www.taylors-conservatorycare.co.uk

Sales • Service • Repair

SUPPLY • INSTALLATION • AFTER SALES CARE • RE-ROOFING

Equipre for:

- Conservatory Repairs
- Conservatory Reroofing
- New Conservatories
- Doors and Windows
- Replacement Glass Units
- Car Ports
- Greenhouses

Please phone for Free Quotation • Fence Registration No. 18796

Family Run Business. Established over 30 years



RED KITE
Pest Control



&
Wildlife Management

Combining Tradition and Innovation

For all your local Pest Control requirements
Flexible Contracts ~ Individual Treatments
BPCA and NPTA Qualified

All **INSECT** Pests
All **RODENT** Pests
All **WILDLIFE** Pests

Specialized Trapping service
Pest Prevention and Proofing
Cleansing, Decontamination, Disinfection

Free Advice
Free no obligation Quotations

Telephone **Andy Staples on:**
07977 044987 / 01886 832730

TVA

TEME VALLEY ACCOUNTS

Bookkeeping VAT
PAYE Sage Accounting
Tax Returns Draft Accounts

Contact: Claire on
Tel: 01584 881708 or 07731 010099
Email: Claire.tva-accounts@outlook.com

Party / Business / Reception / Function

CLIFTON VILLAGE HALL

Three meeting rooms (2 – 120 people)
Modern, well equipped kitchen
with crockery, glasses etc.
Good parking in central location

**Bookings: 01886-812464 / 812238/
812969 / 812335 or
hallshire.com**



Open 7 days a week

*Our Menu offer a variety of dishes.
Locally sourced meat – Knightwick
butchers.*

*Choose from a range of traditional pub
classics.*

*Home -made pies
In house beer battered cod.*

*To book a table
telephone 01886812226*

*Website:
thenewinncliftonupon teme.co.uk*

*Facebook:
The New Inn Clifton-upon-Teme*



**Self Storage
Units**

**20ft Shipping Containers
at Stanford Bridge**

**Under cover
Security lighting**

**Please contact Alex
on 07973 624318
or 07966 865015**



SHEL SLEY VILLAGE HALL FOR HIRE

Set in beautiful surroundings
(with french windows leading onto terrace)

Close to the river and hillclimb
Well equipped kitchen • Bar available
Ideal for meetings, dances, parties etc.

VERY REASONABLE RATES

Contact for bookings
Dave Bates 01886 812551
www.shelsleys-vh.uk



Naturally beautiful & fragrant
British flowers for all occasions

Web: camomilecornflowers.co.uk
Email: kate@camomilecornflowers.co.uk
01886 812184 07887 706147



ANDREW JELLEY OPTICIANS
www.andrewjelleyopticians.co.uk

YOUR LOCAL OPTICIAN

18 Teme Street, Tenbury Wells, Worcestershire

01584 811445

Paul the Painter

**Your local professional Painter
& Decorator**

All interior & exterior work, from a single
room to a whole house.

Tel 07759 298754
E-mail paulthepainter23@msn.com



THE ORCHARD
TAMERS

Laurence Green - 07809 495848
laurence@theorchardtamers.co.uk
www.theorchardtamers.co.uk

WE FIX FRUIT TREES & MAKE WILDLIFE WELCOME

- 1 garden tree or 10 acres
- Gardening for wildlife
- Help, advice and training
- Great present idea!

Are Your Locks Behaving Badly

Check A Lock Fix A Lock

- No Call Out Charge •
- Free Onsite Estimates •

**All Types of Door & Window Locks
Opened • Repaired • Serviced
Jammed Doors • Faulty Locks
Lost • Broken or Poorly Cut Keys
Wooden-UPVC Door & Window
Multi-Point Lock Repair Specialist
Doors Adjusted & Realigned
No Job Too Big or Small
For More Advise Call Stewart**

THE LOCKSMITH

01905 570 999 07871 44 20 11

Local Reliable Independent Locksmith

www.locksmithworcestershire.co.uk



Contact: Juliet Twinberrow
Tel: 01886 821408 Mob: 07772 799754
Email: info@housevet.co.uk
www.housevet.co.uk

Lizzie's
 Chauffeur Services



Liz Whittaker - lady chauffeur
Affordable Comfort Travel in Style
 Transport solutions for up to eight passengers.
 All air and seaport. Wedding and sporting events.
 Local and National journeys. **07814 006179**



**For an Affordable
 & Reliable Electrician
 Choose REWIRED!**

 **The Power Behind
 Teme Valley....**

01886 853 011
07421 748 288
 www.rewired-worcester.co.uk 



the white pheasant

PIZZA, BEER
 AND A LITTLE ALFRESCO DINING

Open Saturday & Sunday
 from 1pm
 Woodfired pizzas
 made to order

Live music
 Friendly ambience
 Great atmosphere

Orleton Court Farm WR6 6SU
 07966294032



Teme Valley Window Cleaning

We are a local eco-friendly window cleaning company providing a professional and reliable service
 Frames & Sills cleaned as standard

Call Mark 07776 254710

temevalleywindowcleaning@gmail.com

- T.V. •Video •Audio
- Electronic Repairs
- Microwave Ovens

DAVE PARKER
 01885 410711
 Mobile 07790 423158

Prompt efficient service at competitive rates

DRAFT Minutes of the Meeting of the Parish Council held Thursday 14th October 2021 commencing at 7.40pm

Present: Councillors J. Bowden (Chairman), A. Henry (Vice-Chairman), R. Henry, J. Collins and B. Gilbert. Also present: County Councillor D. Chambers and 3 members of the public.

Apologies for absence: Cllr C. Haywood and District Cllr C. Palethorpe.

Councillor Resignation: A letter of resignation had been received from Councillor C. Haywood, which was accepted by the meeting. Cllr Haywood was thanked by the meeting for everything he had done to date, and it was noted that he wished to continue in the role of Parish Tree Warden which was gratefully accepted. Cllr Bowden has arranged a handover regarding recreation field matters.

MHDC has been informed by the Clerk and permission granted to co-opt after a period of 14 days public notice has elapsed. The meeting noted that there has been interest shown by someone in becoming a Councillor and the Clerk was asked to clarify co-option criteria as soon as possible.

Declarations of Interests and applications for Councillor dispensations: None.

Democratic Public Time: Matters considered – the Council was asked to consider a 20mph speed limit through the village. The Clerk and County Cllr Chambers confirmed that it is not current WCC Highways policy to set these speed limits and that they are unenforceable. Highways prefer parked vehicles and street furniture to create the perception of a residential area which in turn invites drivers to slow down to an appropriate speed. 30mph roundels may also be an option but don't always work as planned as drivers drive to the limit rather than below it. It was noted that the PC have already installed village white gates and planters/hanging baskets to help reduce speeding.

To agree the Minutes of a virtual meeting held 2nd September 2021 – The minutes were agreed as a true record. Proposed Cllr J. Bowden, seconded Cllr A. Henry. All agreed. No matters arising.

District & County Councillor Reports: Reports were read to the meeting and will be uploaded to the website. County matters highlighted included an update on Covid-19 figures for the county. The provision of school nurse in county schools and the varying support for Young Carers in county schools will be raised at future County Council meetings. Councillor Chambers also reported on attending the Primary School recently which had gone very well. The PC's previous request to improve the footway from the village towards Martley will be incorporated into the next Highways walkabout and will be added to the works programme. The potholes and road surfacing in Kenelm Close will also be inspected. The meeting noted that MHDC Residents Survey via the MHDC website <https://www.malvern hills.gov.uk/about-your-council/public-notice-and-consultations> The survey ends at midnight on 31st October.

Financial & Governance Matters: Payments were approved as per the schedule circulated. Proposed Cllr B. Gilbert, seconded Cllr R. Henry. All agreed. It was also noted that there is an additional payment towards the Village Hall repainting which the Council previously agreed to split 50/50 with the Village Hall. The Council also noted that repairs are also to be made to the Village Hall fire doors, but this will be funded by the Village Hall themselves. The external audit of accounts to 31st March 2021 has been completed with no matters arising. The meeting agreed to purchase a new bench to replace the existing WI bench which has fallen into disrepair. The existing plaques will be placed on to the new bench when installed. It was agreed to purchase a bench made from recycled materials at a cost of £673.00 + vat and fixing costs. Proposed Cllr Gilbert, seconded Cllr Bowden. All agreed. Clerk to ask R. Wilks to install the bench. Cllr Gilbert had circulated costs for R. Wilks to replant and maintain the planters / hanging baskets this autumn at a cost of £350.00+ vat. The meeting also noted the projected costs for 2022 replanting and maintaining. Cllr Gilbert had also received a quote for replacing the last of the old planters with Amberol self-watering barrel planters at a cost of £1348.20 incl. vat.

The meeting noted the positive feedback received from residents, so it was proposed by Cllr Gilbert, seconded Cllr A. Henry to go ahead with the autumn planting and the purchase of the new Amberol planters as quoted. All agreed. Clerk to place the orders. The meeting also discussed the future option to enter Britain in Bloom as a village and agreed to look into it. 'Derek's Garden' may need to be refurbished next year and Cllr Gilbert will explore costs for the next meeting.

Parish Matters / Updates: Village Maintenance Plan – Cllr Gilbert updated the meeting. The Chestnut Tree has now been reduced as agreed together with removing the trip hazards. There are plans to repaint the hydrants and pump. The new dropped kerbs have been installed by WCC Highways as per their notification to the PC. Archives refurbishment: Skellerns are still to produce the door. It was noted that some equipment will need to be purchased shortly and J. Johns will forward details to the Council. Parish defibrillator: Cllr Gilbert has found a second location and the Clerk will shortly purchase the defibrillator as agreed. An article will be placed in the Teme Triangle re the defib and the offer of community training – J. Johns to liaise with the Clerk. Bowling Green renovation was discussed following a report to the meeting by the Club. Some work has already been completed by the Club, but the Council was asked to help with some of the costs of the work to be done. It was proposed by Cllr Bowden, seconded Cllr Gilbert that the PC fund £1000.00 of the work. All agreed. An invoice will be sent to the PC in due course by R. Wilks who is undertaking the work.

Section 106 Matters: Four Acre Field (CFAF) Project – the Clerk updated the meeting regarding the Land Registry application to be made. Plans are being drawn up by the Surveyor currently for submission. A public statement was made to the last Teme Triangle by Cllr Gilbert as agreed. Clerk to arrange a review meeting asap with Cllrs Bowden, Gilbert and the MHDC Surveyor D. Niblett. C. Hurley has asked that the PC collect and plant the young sapling trees obtained for project, and it was agreed to ask R. Wilks to collect them as soon as possible whilst the PC agrees suitable locations.

Community Bus Service to Malvern (CB9) – the service has been launched this autumn and the PC has supported the launch of the service locally with posters as supplied by the service provider.

Planning Matters: Applications for consideration: 21/01739/ful – The Lion PH, Clifton upon Teme – installation of an outdoor timber pergola (retrospective). All agreed no objections to this application.

It was noted that the Blue Shot Bungalow application is still pending a decision and that additional concerns have been raised to the PC recently. Planning notifications: MHDC Draft Supplementary Planning Document for Local Listed Buildings was noted.

Strategic Planning Matters: Cllr Gilbert will monitor and notify the Council of any matters which require attention. SWDP Review has been delayed and adoption is now anticipated in Autumn 2023. It was noted that the current review of Traveller Sites does not affect this parish.

Highways & Facilities Matters: Lengthsman tasks – no outstanding matters. There will be a need to review duties for R. Wilks for the CFAF project in the future plus assoc. costs anticipated. Road closure notices – none. Proposed Public Path Diversion Order - Footpath 650: Cllr Bowden explained the reason for the diversion which was accepted by the meeting. Clerk to notify WCC.

Councillors Reports & Items for Future Agendas: Cllr A. Henry updated the meeting re Carols on the Green this year. Music and refreshments have been arranged and the date confirmed as 17th December at 7pm. It was agreed by the meeting that a budget of £250.00 be set aside for the event and that Cllr A. Henry is the lead for the PC. Proposed Cllr Bowden, seconded Cllr Collins. All agreed.

Correspondence received: A letter of thanks been received regarding the village hanging baskets, which was read to the meeting.

Next meeting to be held on Thursday 4th November at the Village Hall.

Meeting closed 21.15

M. Alexander – Clerk

Hair by Jess
 07779 621229
 Clifton Upon Teme
 Instagram page: #hairbyjessmorris

The Dust Fairy

 Domestic cleaning service in Clifton on Teme covering from Bromyard to Abberley.
07591816821
 the_dust_fairy_cleaning@outlook.com
 www.thedustfairycleaning.co.uk

BILLS GARDEN GATES AND TIMBER PRODUCTS

- Garden Furniture
- Log Stores
- Chicken Runs
- Aviaries
- Storage
- Decking
- Fences
- Your Choice



...and more made to order locally from FSC treated or untreated timber. Bespoke and renovations also undertaken

For more information contact Bill

- Tel: 07580 274999
- Great Witley 01299 896681
- Website: www.billsgardengates.co.uk
- Email: billsgardengates@gmail.com

 www.facebook.com/billsgardengates

COLIN GRIFFITHS
 GROUNDWORKS CONTRACTOR
 MARTLEY, WORCESTERSHIRE

Main Sewer Connections
 Septic Tanks
 Foundations to D.P.C.
 Concrete & Tarmacing
 Site Clearance
 Foul & Storm Drainage etc.

"A Business built on a solid foundation"

For all your private & industrial groundworks

For a personal and efficient service please contact Colin on,

TEL. 01886 821283 MOB. 07836 772501

Eclipse HomeCare
 making a difference

"Award Winning" Care Services

Live-in Care from our specialist team operating across Worcestershire & Surrounding Counties

Hourly Care delivered daily in your own home and designed to meet your needs.

Specialist Support • Dementia • Stroke • Parkinson's
 • Mobility • Medication • Hospital discharge • Washing
 • Dressing • Shopping • Cooking • Companionship
 • Respite • Days out & Holidays



Live in Care safest alternative to a residential home

Outstanding
 Good
 Good
 Care Quality Commission

If you would like to understand more about your options, the costs and funding opportunities then please give us a call

- Respected and trusted business, established over many years.
- Award winning teams of dedicated local carers, many having been caring for the same clients for years.
- CQC inspected and rated 'Outstanding', 'Good' and 'Good'.
- Rated No1 in Worcestershire for three years running by Homecare.co.uk
- Experienced caregiver support team with modern digital systems to ensure reliable and efficient communication.
- NHS and Worcestershire County Council registered.

01905 641 070 (9 am - 5 pm seven days a week)
www.eclipsehomecare.co.uk

LEE JAMES CARPENTRY & JOINERY

Qualified and experienced in all aspects of carpentry

- Kitchens supplied and fitted
- Roofing
- 1st and 2nd Fix
- Renovations – old & new
- Oak timber frames
- Plastic fascia & soffits
- Loft conversions
- Doors & windows

Quality and Satisfaction Guaranteed

For free quotes, competitive prices and a professional service phone:

**(01886) 821151
07779 073870**

Chimney Sweep

Andy Johnson

- Certificate issued
- Weekend/Evening sweeps available
- Traditional brush/Power sweep



01886 821933 / 07798 790913



Physio In The Sticks

www.physiointhesticks.co.uk

Physiotherapy 7 days a week

Local home visits available

Let us help you get back to what you enjoy doing!

Amanda Stephenson

Chartered Physiotherapist

07398 495819

info@physiointhesticks.co.uk



Are you buying your first home, moving home or looking to remortgage?

Midas

Financial Planning

- I personally manage the entire process ensuring you get the perfect mortgage
- I compare, advise and arrange mortgages from the entire market
- I liaise with lenders, solicitors and estate agents to ensure a smooth process
- **100% free** - I never charge a fee for my mortgage services

Call Stephanie now to find out what you can borrow and your next steps
01299 549 820

YOUR HOME MAY BE REPOSSESSED IF YOU DO NOT KEEP UP REPAYMENTS ON YOUR MORTGAGE

01299 549 820 | Stephanie@midasfp.com | www.midasfp.co.uk

Midas Financial Planning Services Ltd is authorised and Regulated by the Financial Conduct Authority



Perks
Accountancy Ltd

- Bookkeeping Services
- Personal Tax Returns
- VAT Returns
- Payroll
- Management Accounts
- Year End Accounts
- Corporation Tax Returns
- Budgeting & Forecasting

Rachel Perks

ACMA CGMA FIAB

Tel: 07484 161382

rachel@perksaccountancy.co.uk

www.perksaccountancy.co.uk

Laugherne Farm House, Martley
Worcestershire, WR6 6QB

REFLECTION

Some words from Rev Canon David Sherwin, Team Rector



The final month before retirement is upon me. How time flies. I recently had a flashback to the memory of when I left my job as biochemist in the health service to train at a theological college in Nottingham with a wife and two children. I sat in the college lecture room on the first day somewhat in awe and realising the significance of what I had done, wondering what the future held. I had really done it! Heard the call from God and given up my job to go train and serve God wherever we were led. Yorkshire, Worcestershire and now as I relinquish my full time role a new chapter in life unfolds in Wales and beyond.

Retirement, as many of you have told me is not a giving up but a taking on of new things, and a time to pursue interests that time has not allowed up till now. I will of course continue to be part of a church community wherever we go and hopefully I will get involved and be able to help. I certainly do not want my puppets to retire nor my guitars be redundant. I also, as many of you know, enjoy fishing so that will be part of my days. I have also dabbled with art and I am trying to learn welsh at the moment, so I will not be idle.

It will be good to be more available to our family and help where we can, whilst keeping in touch with friends and making new ones. It will be an exciting time, though we know we will feel the loss of moving away from you all and the role I have had for 20 years. It has been a privilege to have been involved with you all and served the Lord within the wonderful communities in which you live. We will miss you all, missing bumping into you when out and about and being involved in your lives at crucial point like birth, marriages and at times of loss and leading you in the worship week by week.

Thank you for all your love and support over the years, we have shared so much together, sadness and Joy. I will keep in touch with many of you and wish my colleagues and whoever will come into my place God's blessing as I do all of you. The following verses of scripture are a good summary for me to you;

I thank my God every time I remember you. In all my prayers for all of you, I always pray with joy because of your partnership in the gospel from the first day until now, being confident of this, that he who began a good work in you will carry it on to completion until the day of Christ Jesus. Philippians 1:3-6

FAREWELL EVENTS

TEA AND CAKES: In order to have the opportunity to see you all before we leave, we will be holding a tea and cakes afternoon at Martley Village Hall on Saturday 27 November, 2.30pm - 4.30pm when we can have a time to reflect and have some fun. I am sure the puppets will be there and we might have a sing, O yes we will (do I detect a pantomime). Please come and say hello (and goodbye).

CELEBRATION SERVICE: On Sunday 28 November there will be a celebration service at St. Peter's Martley when we will be able to look back and forward and give thanks for one another. You are most welcome. Followed by food in the hall at Chantry High School.

Please join us for what you can. God bless you all.

David and Jane

SHELSLEY HARVEST SERVICE AND SUPPER

Sunday 17 October saw the Harvest Festival service take place at Shelsley's All Saints Church, led by David Sherwin. Despite the nervousness that still lingers around Covid, there was a decent turnout, which resulted in a strong singing effort - so lovely to hear after so many months. Many thanks to all those who contributed to the service, either through readings, harvest gifts or indeed the fabulous window displays. The service was then followed by an outstanding harvest supper at the Village Hall. Despite the numbers having to be reduced this year for obvious reasons, it was a thoroughly enjoyable evening and everyone was in great spirits. Huge thanks must go to all those who contributed and cooked the food for the evening, as well as the catering team on the night, who did a superb job. A truly great team effort!



Louise Hutton

FRIENDS OF ST KENELM'S UPDATE

We are pleased to let you know that we raised the grand sum of £240 towards Friends' Funds as a result of the talk on Hop Picking. We are most grateful to Ray Morris of Burford, assisted by Mike who made this evening possible. The next event for the Friends will be on Saturday December 11 at 10.30am, when we will be hosting a Coffee and Carols Morning. More details to follow. We are pleased to say also, that once again, we will be having our decorated Christmas Tree Event as part of our Christmas Celebrations. Barbara will be visiting groups, as has been the practice, beforehand to hand over the trees for decorating. We have a list of groups who have decorated trees in the past, but if any group would like to be included this year please contact Barbara on barbarachristinseeley@yahoo.co.uk. Thank you very much for your continued support of Friends.

Nigel Roberts

NEWS FROM ST KENELM'S

Firstly can we say a very big thank you to everyone who came to tidy up the churchyard on Saturday 9 October. A very great deal of work was undertaken and we can now see paths and monuments we had forgotten were there.

- Our next Clean-Up will be an 'Inside Job!' This will take place on Saturday 20 November 10.00am to 12 noon. All are welcome to come along. Coffee and Cakes provided!
- We will be holding a Two Minute Silence on the green on Thursday 11 November at 11.00am. Our Remembrance Service will be on Sunday 14 November starting at 10.45am.
- A reminder that David's Farewell Service will be on Sunday 28 November at St Peter's, Martley at 10.30am followed by Lunch at the Chantry.
- A timely reminder for the present time that we have a Foodbank Box in the church porch and it is well supported, but we could always have more.

Can we say thank you all very much for your continued support, remember the church is there for everyone. God Bless.

Mike, Barbara and Alana

CALENDAR OF EVENTS

November

- 4 Clifton PC Meeting, Clifton Village Hall, 7.40pm
- 6 Bingo, Shelsley Social Club, 7pm
- 9 Talk: 'The History and Role of the Modern SAS', Shelsley Village Hall, 7.30pm
- 9 Clifton WI AGM
- 11 Remembrance Day – Two Minute Silence: Clifton Green, 11am
- 16 Shelsley PC Meeting, Shelsley Village Hall, 7pm
- 19 Clifton WI meeting, Talk on Women's Wellbeing, Clifton Village Hall, 7.30pm
- 20 Bingo, Shelsley Social Club, 7pm
- 20 Inside clean-up of St Kenelm's, Clifton, 10am-12noon
- 27 Farewell to David Sherwin, Team Rector, Martley Village Hall, 2.30-4.30pm
- 27 Christmas Fayre, Shelsley Village Hall, 10am- 4pm
- 27 Clifton Rural Reels: Knives Out, Clifton Village Hall, 6.30pm

December

- 5 Clifton Guides Christmas Fayre, Clifton Village Hall, 10am-1pm
- 11 Country & Western Night, Shelsley Social Club, 8pm
- 11 Friends of St Kenelm's, Coffee and Carols Morning, 10.30am
- 17 Clifton Carols on the Green, 7pm



CHURCH SERVICES IN CLIFTON, THE SHELSLEYS
AND LOWER SAPEY (HARPLEY)

NOVEMBER 2021

Sunday 7th November

The 3rd Sunday Before Advent

10.30am Holy Communion, All Saints, Shelsley Beauchamp
A joint service with Lower Sapey (Harpley) due to building works at St Bartholomew's

Sunday 14th November

The 2nd Sunday Before Advent

REMEMBRANCE SUNDAY

10.45am Remembrance Sunday Service, St Kenelm, Clifton
10.45am Remembrance Sunday Service, All Saints, Shelsley Beauchamp
10.45am Remembrance Sunday Service, St Bartholomew, Lower Sapey
(The service at Lower Sapey will be held in the churchyard)

Sunday 21st November

The Sunday Next Before Advent

CHRIST THE KING

No Services on 21st November

Sunday 28th November

The First Sunday of Advent

10.30am Team Farewell Service to Revd Canon David Sherwin,
St Peter's, Martley
(Followed by refreshments at The Chantry)

All services and timings are subject to review and amendment –
please contact the Rectory or check the website for updates.
01886 888664
www.achurchnearyou.com

YOUR TEME TRIANGLE...

To keep abreast of all the latest Teme Triangle news, visit our website: www.temetriangle.net and Facebook page: www.facebook.com/TemeTriangle

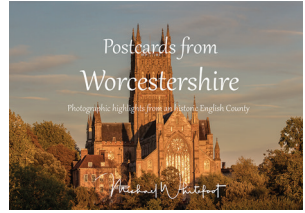
Our free, printed magazine (10 issues/year) is available in local shops and community spaces. And please do keep sending in your Shelsleys, Clifton and Lower Sapey news and photos to: editortemetriangle@gmail.com

... we love to hear from you!

Copy for next (December/January) edition by Friday 12 November please

SHELSLEY PHOTOGRAPHER LAUNCHES WORCESTERSHIRE BOOK

Shelsley Beauchamp photographer Michael Whitefoot has published a coffee-table-worthy new book, 'Postcards from Worcestershire', in time for Christmas gift-giving. The A4-sized, full colour, soft cover book – which expands Michael's existing photo-product ranges such as jigsaw puzzles, wall calendars, Christmas cards and tea-towels – contains 180 of Michael's most popular landscape photographs depicting County views, scenery and landmarks. Complete with a written overview of each area covered, the book provides a souvenir of both Worcester itself and towns including Tenbury Wells, Great Malvern, Pershore, Evesham, Droitwich, Kidderminster and Broadway – as well as photos from the Shelsleys, Martley, Great Witley and other villages. Several fascinating aerial shots also offer a bird's eye perspective on familiar towns and landscapes below. The new book (RRP £20) is available now from shops including Central Stores Martley, selected WH Smith branches, garden centres, gift shops and tourist information centres, as well as online from www.michaelwhitefoot.co.uk



Tenbury Wells, Shelsleys, Martley & Great Witley

The landscapes of the far west of Worcestershire are considered to be especially beautiful, characterised by undulating wooded hills and peaceful valleys carved by the River Teme, as it meanders from mid-Wales to join the Severn near Worcester. This largely rural area is host to a variety of mixed farming, from listed Cotswold cattle and sheep rearing, to hop growing and ancient fruit orchards.

Closest to the Shropshire and Herefordshire borders lies the ancient market town Tenbury Wells, referred to by Queen Victoria as 'my little town in the orchard'. Its town centre is a conservation area featuring independent shops and regular markets. Running across the north end of the main street is the River Teme, intersected by the Teme Bridge – the site of a river crossing point since the 13th century. Perhaps Tenbury's most distinctive building is the Pump Rooms, built in 1862 in the (unfulfilled) hope of promoting the town's 'healing' well water to the working classes of the city.

Further east the River Teme flows beneath Sanford Bridge, and then through a collection of three, rural hamlets collectively known as the Shelsleys: Shelsley Beauchamp, Shelsley Kings and Shelsley Walsh. Although quietly bucolic today, the Shelsleys are steeped in history. In 1605 the Walsh rebel leader Owen Glyndwr's combined Welsh and French forces faced England's armies on the hills above the village while at the end of the English Civil War, in 1652, Oliver Cromwell and his camp shelled local buildings. Shelsley Beauchamp's All Saints Church dates back to the 14th century. Neighbouring Shelsley Walsh has a more modern claim to fame. Sinking 1,000 yards (300 m) up the steep valley sides, the Shelsley Walsh Hill Club is the world's oldest working motor-racing venue, and hosts competitive speed weekends including the British Hill Climb Championships.

Elsewhere in the area, the village of Martley, situated on a loop of the Worcestershire Way walking trail, offers a small selection of local amenities alongside postmodern and mixed agriculture.

To the north east of the region is Abbey village. Its best known landmark, visible from miles around, is the Victorian Abbey Clock Tower which stands on a hilltop in the grounds of Abbey Hill School. Its neighbouring village, Great Witley, is home to the spectacular ruins of Witley Court. Although destroyed by fire in 1937, the site, with its 18th-century gardens and fountains, is open through English Heritage. In its grounds, St Michael and All Angels Church is considered Britain's finest Baroque church, featuring spectacular, pilled early 18th-century ceiling paintings by Antonio Banti.



The town of Tenbury Wells

BERT BRADLEY (1927–2021)

Bert Bradley, one of Clifton's longest serving public servants, has died at the age of 94. He served as a Parish Councillor for many years, more recently as Chairman. He was also the parish Tree Warden for more than 40 years, Chairman of the local branch of the Royal British Legion, served as Chairman of the Village Hall Committee and with the local Scout and Guide Committee.



Your Local Agent Since 1898

- Estate & Letting Agents
- Chartered Surveyors & Valuers
- Planning Consultants
- Auctioneers
- Land & Estate Management
- Sale and Letting of Rural and Urban Property
- RICS Registered Valuers
- Landlord & Tenant Negotiations
- Basic Payment Scheme & Associated Matters



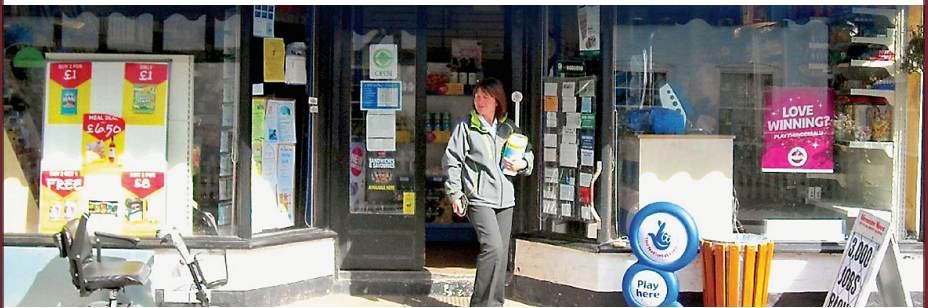
The Estate Office · Hill House · Great Willey · Nr Worcester · WR6 6JB

www.gherbertbanks.co.uk

The Village Stores

27 THE VILLAGE, CLIFTON-UPON-TEME WR6 6EN

01886 812303



Open 7am-7pm Mon-Fri 7am-6pm Saturday 9am-12 noon Sunday

Contributions for the next (December/January) edition by Friday 12 November 2021 please to: editortemetriangle@gmail.com