

Jul/Aug 2020

Teme TRIANGLE

Clifton upon Teme • The Shelsleys • Lower Sapey



The newly-opened 'Apple Box' open-air tearoom at Pitlands Farm, Clifton.

In this edition

- * **Local residents assisting with and adjusting to the Covid battle**
- * **Clifton Four Acre Field update**
- * **Church opening updates**
- * **New 'Open-air' tearoom at Pitlands Farm**
- * **And much, much more....**

*I think when the dust settles,
We will realise how very
little we need,
How very much we
actually have,
And the true value of
human connection.
(Author unknown)*

Visit the website



www.temetriangle.net

Free to Residents

Mandy Parker



It is with sadness that we announce the sudden passing of Mandy Parker, co-owner of The Den At Mill Farm Country retail in Stanford Bridge, on 11th May 2020. Mandy and her husband Steve moved to the Teme Valley over 5 years ago after falling in love with the natural beauty of the Teme Valley. Mandy made many good friends in the local area and will be missed for her creativity, her laugh and her kindness. Steve and his children James, Amie and Julian would like to thank everyone, from the bottom of their hearts, for the support they've had over the last few weeks and for the wonderfully moving farewell at Mill Farm.

WELCOME TO THE JULY AND AUGUST 2020 EDITION OF THE TEME TRIANGLE.

Well here we are, three months on from my last edition and whilst our daily lives are by no means 'back to normal', we are daring to hope that there is now light at the end of the tunnel.

Shops are opening, schools re-starting, dentists taking bookings and pubs are due to open shortly. Normal life is trying to resume, albeit a 'new' normality.

We are grateful to all those who have submitted articles for this edition, from local businesses doing their part to help in the Covid battle, to those diversifying in order to keep their business going and continue to provide services to the community. We have an insight into the terrible reality of a Covid ward; an update on the exciting Clifton four acre development; and positive news that our Churches are slowly starting to re-open.

So I hope that you enjoy the read and, as has become the norm to say at the end of every conversation, every email, every message...keep safe.

EDITOR: Louise Hutton
WEBSITE/CLIFTON NEWS: 01886 812304
crown.house@polperropress.co.uk
SHELSLEYS NEWS: Michelle Whitefoot:
michelle@whitefootpr.co.uk
Louise Hutton
louise@stroyd-hutton.com
LOWER SAPEY NEWS: Marion West 01886 853249
marionjeanwest@googlemail.com
ADVERTISING/SPONSORSHIP: Andrew and Anna Brazier
01886 887898
teme.triangle@thebraziers.co.uk

Opinions expressed in this publication are not necessarily those of the editorial team. Teme Triangle is not responsible for goods and services advertised. Contributions may be edited at the discretion of the editor.

A MESSAGE FROM REV CANON DAVID SHERWIN...

As I write this article the government has given permission for places of worship to open for personal private prayer. This of course excludes services of worship or even a wander round to view the history and architecture of the building. This is of course intended to continue to hold up and prevent the communication of Coronavirus further.

It has been a difficult few months but as things return to some sense of normality we find that nothing is quite the same. We have all been affected in some way, some more severely than others, but the effects of the virus live on both here and abroad.

Having said that, the one constant for us as Christians is that God is constant and does not change. He is with us as we worship and pray in our buildings and he is with us at home and out and about in the community. We do not need a building in which to pray, for we ourselves are called temples of God himself. He lives in us and works through us and we have seen how in our fellow human beings there have been acts of kindness and generosity that stem from the values and character of God.

But back to those buildings which have stood as a symbol of continuity in our villages and towns for centuries. Whether open or not, they represent a God who is always open to receive our prayers wherever we are. Yes, when they are open it is good to enjoy that space and to come together for corporate worship and prayer, which hopefully will be soon.

In the meantime if you wish to pray within one of the buildings, each will vary in the amount of opening time it can cope with, dependant upon the practicality of cleaners available. If you wish to know when your parish church is open, please check the notice boards or ring myself or a churchwarden.

We continue to pray and worship online and our weekly services can be found on the 'you tube' site 'wwrt live stream'. I do pray you will keep safe and well and as has been said 'we will meet again', out and about and in our buildings soon.

God bless.

Rev Canon David Sherwin, Tel: 01886 888 664.

And so an update from our two largest Churches.....

ALL SAINTS CHURCH, SHELSLEY BEAUCHAMP

As we have to follow and implement government guidelines, we aim to open All Saints Church as from Wednesday 1st July for private personal prayer only.

Opening times will be Sundays 10 am to 2 pm and Wednesdays 2 pm to 5 pm. When we can open the building more fully we will of course do so.

Thank you for your understanding and keep safe,
Jane Froggatt, All Saints Churchwarden.

JULY UPDATE FOR ST KENELM'S, CLIFTON

The PCC has been working behind the scenes on several 'fronts' and if some of you have taken a quiet walk around the churchyard you will see that the undergrowth has been cut back. This is, as you can imagine, a continuing process. We are also having the extended churchyard (where our Quiet Garden will be developed) strimmed regularly so that the weeds will be contained and we are then able to move on to the next phase of development. More of this in the future - we will certainly be seeking Parish input.

We are sure many of you will have looked at the Corsican pine in the front of church and, during the high winds which we have experienced in the past year, probably wondered if 'that thing' is safe. The PCC has certainly thought that at times and so we have had the tree surveyed and checked and we are happy to tell you that it is in a healthy condition. We are putting in place a contract to have the tree checked on an annual basis.

By the time this goes to print for July, we are hoping that St Kenelm's will have been open for private prayer for some time. At the time of writing this, we are being told by the Church of England what safety measures we will need to put in place, in order to be able to open the church again.

Rest assured we will do all we can to ensure that we are a safe place, but that also, we can all take comfort from the special place that is St Kenelm's Clifton.

God bless and take care.
Alana and Barbara.

2020 BIG BREAKFAST at Harpley Church on September 12th

Watch out for further information on our advertising boards,
following government guidelines on social distancing.

NIC SPROSON THE OPTICIAN

Contact Lens Specialists

* Patient Car Park *

52 Barbourne Road, Worcester

Tel: 01905 27327

www.nicsprosontheoptician.co.uk

David Ward firewood

Do you need a dependable consistent quality supply of seasoned or kiln dried hardwood and softwood firewood?

Cut and split to suit and delivered in breathable 1.2-cubic metre bags, so no need to restack.

Small delivery vehicle, fitted with crane, can deliver to most locations and situations.

CALL DAVID TO DISCUSS YOUR REQUIREMENTS:
Mobile: 07866 441154

A WOMAN'S TOUCH!



LADY DECORATORS

PAINTING, WALLPAPERING
TILING (WALLS & FLOORS)
INTERIOR DESIGN & ADVICE


CLAIRE LENNARD

01886 889099 ~ 07710 469427
THE OAST HOUSE, MARTLEY, WR6 6QB



Available at :
Mill Farm, Stanford Bridge
The Fold, Bransford
Contact Fiona Clarke RGN; MAR
fionajclarke@btopenworld.com

07969 190198

 Find me on Facebook
Reflexology by Fiona Clarke

Meadows Soft Furnishings

by Tracey Birks

Bespoke handmade curtains, blinds,
soft furnishings and lampshades
designed and made for you

No obligation home consultation

tracey@meadows-soft-furnishings.co.uk
www.meadows-soft-furnishings.co.uk
01886 812583 or 07831 818104

Re-Upholstery & Repair Service

Est 1986

Nicholas Mather

Ryelands, Menithwood,
Worcester, WR6 6UG

Please contact: 01584 881 227
nicholas.mather@btinternet.com



HAINES HEATING &

PLUMBING



01886 812213/07534700932

www.ahainesheating.co.uk

**-We install, service & repair
your home appliances.**

-Oil, Gas & LPG Qualified.



A.M. JONES

**Harpley Works
Clifton-on-Teme**

- MOT Repairs
- Servicing
- Accident Repairs
- Tyres
- Batteries
- Exhausts

Tel/Fax: 01886 853 530

Mobile: 07970000881



**WHATLEY WESTON & FOX
SOLICITORS**

**Specialists in Wills, Inheritance Tax
Planning, Administration of Estates,
Powers of Attorney and Court of Protection**

Our solicitors are approachable and friendly
Home Visits if required
To arrange a friendly and confidential
consultation contact

**Clare Burden formerly of
Worcestershire Wills Or Philippa Pipe**

Accredited Member of Solicitors for the Elderly

On 01905 731731
Or email c.burden@wwf.co.uk or
p.pipe@wwf.co.uk

**Website: wwf.co.uk
15 & 16 The Tything, Worcester WR1 1HD
For all your legal needs including
Conveyancing, Employment, Civil Disputes
and Family Law**

**Professional Dog
Walking
& PetCare Services.**



www.petsadventures.com

Contact Ruth on: 07736151130 or
email: ruth@petsadventures.com

We are delighted to offer the following
services in the WR6 area:

- Professional Dog Walking
- Dog Home Boarding
- Doggy Daycare
- Pet Companion & Home Visits
- Pet Taxi Service
- Chicken & Small Animal Boarding



A. H. CALDICOTT & SONS

Funeral Directors

15 MARKET STREET,
TENBURY WELLS, WORCESTERSHIRE
TELEPHONE: 01584 810281
FAX: 01584 811420

*A family
run business
established 1919*

*Burials
Cremations
Chapel of Rest*



- Woodburning & Multifuel Stoves
- Stove Spares & Repairs
- Glass, Ropes, Bricks, Baffles, Cleaners
- Chimney Liner Kits & Flue Pipes
- Kiln Dried Logs, Kindling and Firelighters

**01886 812452
www.is-stoves.co.uk**

Showroom & Online Shop

Steps Farm
Clifton Upon Teme
Worcester
WR6 6EN

LOCAL SHELSLEY COMPANY ASSISTS WITH PPE PRODUCTION

It is not generally known, but local Shelsley Beauchamp company 'S B Print Ltd' have been very much involved in the Coronavirus battle, by working to help in the supply of the patterns needed to make Scrubbs protective wear.

As Barry Hodgetts explains:

"Some local volunteers making these garments were struggling to get accurate patterns produced and were having to stick about 50 sheets of photocopied A4 paper together for each one. Luckily we have a large format printer here capable of printing these patterns in one big piece and when we heard about this problem we were only too happy to step in and donate several large batches of them. We are extremely proud to have represented the Teme Valley in this way and played a supporting roll alongside the dedicated army of sewers making garments for front line care staff in these troubled times.

We have also produced an illustrated booklet containing details of Covid related floor graphics, safety signage, screens, sanitiser stations and other related items to help businesses and organisations stay safe and conform to the new social distancing requirements. It contains a useful section of web based resource links covering everything from business help and grants, through to risk assessment templates and HR considerations. It is available to download or view as an e-flip book or a free hard copy can be ordered from S B Print Ltd. Please contact 01886 812 160 or email simon@sbprint.co.uk for further information."

Covid flipbook:

<https://www.flipsnack.com/SBPrint/sb-get-workplace-ready.html>



Simon Hodgetts reviewing a design template.



Chairman Barry Hodgetts and his wife Irene started SB Print nearly 50 years ago. Son Simon joined the company in 1992 and in recent times has been joined by wife Rachael.

HARPLEY RESIDENT ON THE COVID FRONTLINE

By Anna Stephens

Our NHS staff have always been the real life superheroes, but nothing has bought this more to light than the recent Covid-19 outbreak and the doctors, nurses, paramedics and other hospital workers that are working on the frontline to help protect and save lives.

Liz Younge, from Harpley, is a Ward Manager in Critical Care who works in Gloucestershire, and very generously gave up some of her precious time off to tell me about what her job is like and how it has been affected by the Covid-19 outbreak. She tells me that one of the most significant ways the virus has affected the day to day role of her job is the amount of PPE she, and her critical care team, is required to wear.

“We had a lot of PPE to wear and it was very hot. You had your underwear, then scrubs then we started with a fluid resistant disposable gown, tight fitting mask (that was hard to breathe through as it is designed to keep out anything airborne), gloves mask, surgical hat optional and then a visor or goggles. That was minimum in the patient area. Then when actually touching/caring for patient you needed to put plastic aprons on over top. So patients didn't get cold we couldn't change the air con too much. Staff worked for up to 4-6 hours at a time in this. We encouraged them to have three breaks in our 12.5 hour shifts. During breaks you could get down to scrubs but had to go through a rigid order to remove PPE and decontaminate hands regularly during this so not to contaminate yourself. Eventually we got full coveralls instead of the surgical gowns as these were washable and so wouldn't run out. These came from Wales and had the nuclear symbol on them, they got packaged up and sent away for washing. Staff were not allowed to travel to or from work in uniform or scrubs so all attended work early to change and then stayed after shift to shower and change before leaving. We sometimes had 40 staff wanting to use three showers.”

Another incredibly challenging aspect of Liz's work has been the change in routine and procedure, as well as having to deal with the unexpected. “We normally only have twelve people on shift, but we doubled our bed occupancy and had staff from other areas redeployed to us to help. However, as they weren't critical care trained, we had to teach them on the job too. We started what we called pod team nursing. So instead of 1 nurse to 1 patient we had 1 critical care nurse to six patients supported by other nurses, junior doctors, and allied health care professionals. So, they allocated tasks to pod staff members within their skill set and so as a team they could all do what was needed for their 6 patients. This was incredibly stressful for the critical care nurses as we like everything just so. We are always ready to react to the unexpected.”

“As this was a new virus, we didn't know how it would pan out and effect our patients and so we really didn't know what to expect at the beginning. We were learning from experiences in China and Italy. We talked to the rest of our colleagues in the

network. Although Gloucestershire was the busiest in the South West network (even busier than Bristol). We were changing our practice all the time as we gained more insight into the virus and patient response. No visitors allowed made it really difficult, where we would normally talk to them face to face and be constantly answering their questions and build-up a rapport with them, we could not do this. We had a family liaison team who rang the relatives every day and updated them. We also had the ability to receive video calls to a tablet and we could enable them to chat to the patient if they were awake. Or just show them their relative if they were unconscious and explain all the tubes and wires to give them some idea of what was happening.”

“We had to double up bed spaces and so we took the curtains down out of the way and so it was difficult to maintain privacy and dignity. Awake patients were very understanding, maybe feeling too ill or scared to care, but to us it felt very wrong. We had screens but it wasn’t the same. Also, patients were a lot closer than normal, so we had to be even more vigilant that we didn’t cause cross infection, not just for Covid-19. So we were regularly changing gloves, aprons and hand washing (as we normally would). Not just thinking about protecting ourselves from Covid-19, we needed to make sure we didn’t take anything from one patient to the next, but make sure we didn’t breach our PPE when changing things.”

“As we got more tired, we would be more likely to make mistakes, or move our mask to scratch our nose so we had a buddy system. We were always watching each other and tried to stop any breach or sent the staff member out to redo their PPE if needed. None of our staff have acquired Covid-19 from a patient. Some were isolated and treated due to potential family members with symptoms, but no positive transfers happened from patients so our PPE and our ways of putting on and taking it off were effective.”

Despite the incredibly stressful working conditions, Liz tells me that one of the positives that she, and her co-workers do to look after themselves and cope with such stressful times is to plan for staff time out.

“We knew this was going to be quite overwhelming. Not only did the workload go through the roof, but we were giving a lot of responsibility to others, losing the control, and changing practice, but also watching young people who were very sick, and worried we may catch it or worse still, take it home to our families. So, we made sure staff knew they could say ‘I’m not ok’ if we knew someone was struggling, we would try to alter shift pattern to give them a rest. We have a clinical psychologist available full time for six months as we knew there would be a lot of moral injury to our staff as well as PTSD.”

Liz describes some of the worst moments as though they were ‘in a war zone’. But it was the strength and camaraderie of her team that made them very strong together. “We are a great team and every few minutes there were people in the staff room laughing. We have just advertised for more nurses and we have had more applicants than ever before. Mainly from the nurses who were redeployed

from their normal job to us. Even during all this stress our staff were friendly and welcoming and supportive enough to make those nurses say “I want to work there” even after it being the most horrendous time for us. It was messy, organised chaos, with stupid numbers of patients and doctors and nurses learning how to care for them as they went along. So, I am really proud of our team, critical care for Gloucestershire hospitals, and to be even more impressive we had the best patient outcome statistics for the whole of England.”

Liz tells me that one of the most positive things that the public do to make her job easier is that she ‘had a massive requirement for scrubs which the hospital supplier couldn’t keep up with so the public were making them from everything from curtains to Ben 10 bedding. As long as it could be washed at 60 degrees it was good. They also sent in fabric bags for us to put scrubs in to put straight in the wash when we got home so we didn’t need to touch them. We also had some from a designer in London, Emma Wills, who apparently makes shirts for royalty at £350 each. Those scrubs were free and a lovely material. People made head bands to stop our ears getting sore from the elastic of the masks. They made woollen hearts in pairs for us to give one to a patient and the other to the relative, to give them a connection. We also had lots of food sent to us and drinks, ice- creams and toiletries. School children and Veterans were writing us letters. The support from the community was amazing.”

Finding out what Liz’s work conditions were like in the hospital helps to understand what NHS workers have been doing to help save lives. She says that the public can help by keeping their distance and washing hands before touching their face in any way. “Lockdown is hard, and we miss our families, but we are doing this today so we have them in our future.”



Liz’s team in their PPE



The team enjoying an ice-cream on a well deserved break.



The team’s ‘Wobble Space’, where they can take a few minutes time out.

JEREMY MASSEY

Qualified Electrician

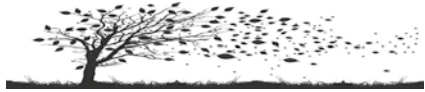


Registered
Electrician
– BS7671

- ✓ Household Electrical work
- ✓ Fast, Reliable & Friendly
- ✓ Very high standards met
- ✓ Inspection & Testing

Contact: 01886 888493

West Wind Counselling



Sarah Jeffery MBACP Sapey Common Worcs WR6

For help and support
with emotional pain or distress
including:

- depression, stress, anger or anxiety
- bereavement, loss, setbacks, grief
- low confidence or self-esteem
- relationship difficulties or other troubles

T: 07432 078087

E: westwindcounselling@gmail.com

W: www.west-wind-counselling.co.uk

Please call or email me for
a first confidential discussion.

I look forward to hearing from you.

"It was such a relief to find someone to talk to, who understands and can help me to find my way. I would recommend counselling with Sarah to anyone who is struggling to cope." (Client RP)



01886 889248

Hairdressing and Barbering salon now open in Martley
next to the Maylite trading estate

Senior Citizen discount available on a Wednesday starting
from the 1st March 2020

Late Nights Wednesday and Thursday's until 8pm

Telephone the salon for all appointments and enquiries

ZED YOGA

Yoga classes for adults of all ages:

- Broadwas Village Hall, WR6 5NG
Tuesday mornings
- Hallow Parish Hall, WR2 6PP
Tuesday evenings
- Hallow Parish Hall, WR2 6PP
Wednesday mornings

For more information or to book
please contact Zoe Herington:
email: zedyoga.booking@gmail.com
tel: 07962 981456



THE MANOR ARMS

ABBERLEY

Open 12pm - 11pm Every Day

Call 01299 890300



A beautifully refurbished traditional village pub with locally
sourced fresh food and ales.

*Our Head Chef sources top quality local ingredients to create
traditional dishes and exciting specials.*

Overnight stays in our beautiful rooms, available this Autumn!

*You and your guests can be sure of a warm welcome, we look
forward to seeing you soon.*

*Free function room available for local clubs, meetings,
special events and parties.*

The Manor Arms Inn, Abberley Village, Worcestershire WR6 6BN

www.themanorarms.co.uk

Follow us on Facebook and Twitter for news and events.



The Manor Arms Inn Abberley



ManorArmsInn



**Feet First
Foot Health Clinic**

Treatment for: corns, callus, cracked heels, verrucas, fungal infections, ingrown toenails. Orthotic insoles specialist.

Ground floor clinic just outside of Bromyard with onsite parking. Home visits available.

Helping to keep people on their feet for over 11 years!

Tel: 07580160997

**PHIL GRAY
Dairyman / Newsagent**

*National...Daily...Sunday & Local Papers
...Magazines...All Milk...
...Dairy Products...Eggs...Soft Drinks
...& Waters etc.*

Let your Milkman do the Walking
01584 881385 / phil@eardiston.com

purethyme
wellbeing and beauty



Visit us at Mill Farm, Stanford Bridge, for Beauty and holistic treatments, bespoke pamper parties, yoga and pilates classes, wellbeing workshops and talks.

**Please call for an appointment or more information on 07964 176747
www.purethyme.co.uk.**



ORKE®
Wrought Iron Design
07969 071 847
orke.co.uk
Blacksmith Forged in Worcestershire

**C.L. GIBBS
BUILDERS**

**EXTENSIONS • ALTERATIONS
PLASTERING • UPVC WINDOWS
ROOFING • TILING • LANDSCAPING
FASCIAS • GUTTERING • STONE WORK**

For all types of building work call your local family builder for advice and free estimate

**01886 812 450
07905 396 971**

Temetriangle

**Quality firewood
Seasoned
Split mixed
Hardwood
Softwood**

**Various size loads
POA**

Contact Spike Milton: 01886 812154 or 07773 428701



HUNTLANDS FARM BED & BREAKFAST AND UPHOLSTERY

www.huntlandsfarm.co.uk

Tel: 01886 821955 / 07828 286360

OFFERS:

upholstery classes • upholstery commissions
en suite b&cb accommodation • wedding venue
all in an idyllic, rural setting on a working farm.
And a self-catering, 6 bedroom farmhouse on an
adjacent farm, www.moorhallfarm.co.uk

*Your hosts, Lucy, a custom upholsterer and
Stephen, a passionate cook, guarantee you a comfy
stay with freshly prepared, local food to enjoy.*

ANDREW JELLEY OPTICIANS

18 Teme Street Tenbury Wells

01584 811445



www.andrewjelleyopticians.co.uk

Tiling by Creative Ceramics

Ceramic wall and floor tile fixing
Stone, slate and quarry tiles

Over 20 years' experience
Free quotations

07538 392014

creativeceramics237@gmail.com

MARTLEY OSTEOPATHIC CLINIC

Osteopathic treatment
for infants to adults
including cranial techniques

01886 889 002

Mark Roughley

GOsC

Registered Osteopath



Maylite Business Centre
Maylite Trading Estate
Martley, WR6 6PQ

Charity number: 1056248



Monday-Friday
9am-3.15pm
Ages 2-5



Forest School Sessions

Full & Half Days Available
Indoor & Outdoor Facilities Available
ALSO!



Graduate Leader

Breakfast Club 8am-9am
After School Club 3.15pm-6pm
Ages 2-13

Martley CoE Primary School
Martley Worcester WR6 6TJ
01886 889127

www.martleypreschool.co.uk



Ombersley Family Dental Practice

MRS ANDY WRIGHT B.D.S. (EDIN)

A friendly private practice specializing in preventive dental care for all the family in a happy relaxed atmosphere.



New patients welcome

Cosmetic treatments including tooth whitening

Sports gum-shields for all ages in various colours and designs

Same day emergency appointments

Large car park

Tel: 01905 621881

RACKS LANE, OMBERSLEY,
NR DROITWICH, WORCS. WR9 0EN

www.ombersleyfamilydental.co.uk

**SERVICED OFFICES
AND WORKSHOPS
AVAILABLE ON
FLEXIBLE
MONTHLY TERMS
ALSO SMALL
INDUSTRIAL UNITS**

www.maylite.co.uk

Please contact Kate Shrubbs on
01886 888455 for more details

MAYLITE Business Centre

**MAYLITE TRADING ESTATE,
MARTLEY WR6 6PQ**

Tipton Hall Riding School

Riding lessons for all ages and abilities.

Hacking-through wonderful countryside.

Horse Livery-small friendly yard.



Roger Benbow
BHS&I Reg. Instructor

Phone: 01885 488791
mobile: 07792 358741
www.tiptonhallridingschool.com



Clifton-upon-Teme
Nursery and Pre-School

**Offering quality childcare
and
pre-school education
For 0-5 year olds**

**Open 7.30am – 6.00pm
Experienced qualified staff
Flexible hours
Ofsted Registered
Nursery Education Grants available**

**Also offering job opportunities for
professional, committed staff
looking for support in their
career development.**

For further details,
please telephone the Manager
at the Centre 01886 812380
The Village, Clifton-upon-Teme,
Worcester WR6 6DE.



K.B. CATERING

**TAILOR MADE QUALITY MENUS FOR
ALL YOUR CATERING NEEDS**

Dinner/Cocktail Parties, Weddings & Corporate Functions etc.

Kit Bamford

15 Great Crocroft, Pershore, Worcester WR10 1QS
0780 1699597 / 01905 349849
Email: kitbamford@live.co.uk
www.kbcatering.co.uk

SPILSBURY AND JONES BREWING COMPANY – ADJUSTING TO LOCKDOWN



Back in 2018, a chance meeting between local hop farmer Tom Spilsbury and newly retired brewer Tony Jones started the journey into the creation of the 'Spilsbury and Jones Brewing Company'. Both Tom and Tony initially wanted to produce a craft lager using the Fuggle and Challenger hops grown on the farm, to create a pilsner style craft lager. After a short time, 'Tom Jones' craft lager was born, closely followed by the ales 'Ernest' and 'Fuggles Gold', both using the hops grown within meters of the brewery door.

As everyone is aware, hop farming is heavily featured in the Teme Valley, due to its fertile land and deep soil, which is essential to being a successful hop grower. The Spilsburys have been farming in the Teme Valley for over 400 years and farming hops on the Winnington Estate for 3 generations. Orleton Court Farm has around 50 acres of hops planted, which are all sold on contract to major breweries in the UK, with some pelleted and exported across the world.

As a hop grower and with a love for beer, it seemed a natural move for Tom Spilsbury to start producing lager and bitter from his own hops to serve in his own pop up bar 'The White Pheasant'.

Sales and feedback from customers drinking the Tom Jones, Ernest and Fuggles Gold at The White Pheasant were encouraging and sales were ticking over, but then Covid-19 reared its ugly head and suddenly everything changed.

The White Pheasant was closed, parties and weddings cancelled and suddenly a shift in business needed to be made quickly in order to survive these uncertain times. Whilst Tom Jones Lager had always been supplied in 500ml bottles for the farm shops, selling online had not been previously done. Since starting sales initially just through facebook, the team quickly realised that sales needed to go online through their website www.spilsburyandjones.co.uk. The lure of free local delivery straight to your door step, contact free, has meant that Tom and his wife Amber are busy delivering at least two days a week across Worcestershire and Herefordshire. With the assistance of Phil and Jan Gray, to help keep up with demand, you can even have your beer delivered with your milk! What could be better!

Tom and Tony predict that drinking and entertaining from home will remain popular, so they hope that the local deliveries will carry on being popular post Covid. However, overall beer consumption is down around 40% and with over-production of hops over the past few years, once again the future of hop farming remains uncertain, so Tom and Tony hope that post lockdown local pubs and restaurants will support local business and pick quality over price, as they are unable to price match with the large multinational breweries. Tom feels that during lockdown there have been lots of local businesses which have thrived and hope that this continues into the future with consumers buying local.

What next you may ask for this local business? They hope to open a tap house next to the brewery, carry out brewery tours and maybe a new beer on the horizon - who knows!

The Spilsbury and Jones Brewing Company currently have three products; 'Tom Jones' a craft pilsner style lager with a clean citrus after taste, 'Ernest' an English Pale Ale with a citrus spicy hop after taste and 'Fuggles' a light session ale with a delicate floral aroma all available from www.spilsburyandjones.co.uk.

LOCAL FOODBANK DONATIONS CONTINUE...

Local residents in the Teme Valley parishes have continued to donate non-perishable items for the Worcester foodbank, prompting a message of thanks to the 'extraordinary generosity of the local community' who have rallied behind efforts to support the growing number of households impacted by the coronavirus outbreak.

"I thank everyone here who has been donating and collecting donations and that items for the foodbank can still be left at the Rectory in Clifton or store cards or payments to the Worcester foodbank can also be made online," said Rev Becky Elliott. "What the foodbank is really in need of at the moment are store cupboard staples like stock cubes, herbs and spices, cooking oil and tomato puree."

Two-thirds of the donated supplies have already been swallowed up with volunteers feeding just over 1,000 people a month, making it the second busiest period since the Worcester foodbank opened its doors eight years ago. The outpouring of support has left the charity in a much stronger position to deal with the economic slump, which is expected to follow the lifting of lockdown.

Items most needed are: Supermarket gift cards, Cracker Biscuits, Peanut Butter, Sponge Puddings, Tomato Sauce, Brown Sauce, Cooking oil, Herbs and spices, Tom puree, Salt, Black Pepper, Shampoo - unisex, Deodorants – Unisex, Washing Powder – small, Washing up liquid.

The foodbank also accepts money and gift cards to enable it to buy what it needs. Or donate online at www.worcester.foodbank.org.uk.

SHELSELEYS CV HELPLINE UPDATE By Louise Hutton

Even with the lockdown restrictions easing, the Shelsleys CV Helpline continues to support local residents in need during the Covid outbreak. Whether it be shopping, fetching prescriptions, or just a friendly phone call or chat over the garden fence, there has been much appreciation for the Community goodwill shown during this challenging period of our lives.

Whilst we are proud to report that the numbers requiring assistance has decreased, there are still several households shielding within the Shelsleys, so support will continue for as long as required, both to those already receiving assistance as well as any new households who contact us.

Huge thanks to David Moore and all those volunteers involved in providing, cooking and delivering turkey meals to our vulnerable neighbours.

And of course thanks and huge appreciation to all those volunteers who have helped support the helpline initiative – we couldn't have done it without you all.

CLIFTON FOUR ACRE FIELD UPDATE

The team working on the Four Acre Field Project in Clifton report on progress at the start of their consultation process. This is an ambitious plan to regenerate the recreation areas adjoining Pound Lane with money provided by the S106 funding from recent property developments.

With £250,000 allocated to the project there is considerable scope to enhance the excellent facilities already in place, providing a community facility for all, focusing on quality equipment, enabling biodiversity and ensuring acceptable maintenance costs. The images on the next pages show how the play, sports and social areas might be developed.

The team has gained a lot of knowledge over the past six months by speaking to potential contractors and various village groups gaining from their helpful guidance and comments. The project team benefits from including representatives of the various sports currently on the site as well as all age groups who will potentially use the facilities.

Teme Triangle (magazine and website) and the main village noticeboard will be used to keep everyone informed. Comments and observations throughout this period are welcomed. It is important for everyone to know that the current images may change as the project progresses and the team continues to listen and learn.

There is an email address cuts106play@gmail.com which can be used for feedback. There is also a postbox in the Village Stores for those without email who wish to provide feedback. All comments will form part of the consultation process and be added to those of the children, who have already been invaluable in helping to arrive at the images overleaf.

This is how we think the delivery timetable will develop:

July 2020: Start consultation process as widely as possible

October 2020: Submit plan to Parish Council and prepare application

December 2020: Submit s106 application to MHDC

February 2021: MHDC provides approval

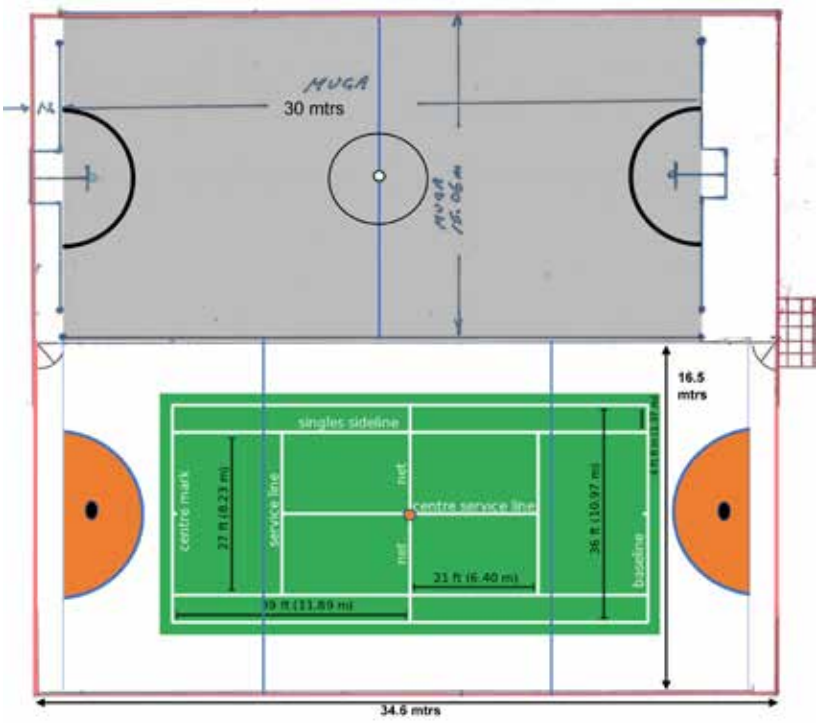
March 2021: Commence groundwork

April 2021: Start sports, play and perimeter path installation

July 2021: Launch total facility



Site view showing play, sport and garden areas linked by the perimeter path.



Multi Use Games Area and Tennis Court with basketball & netball options.



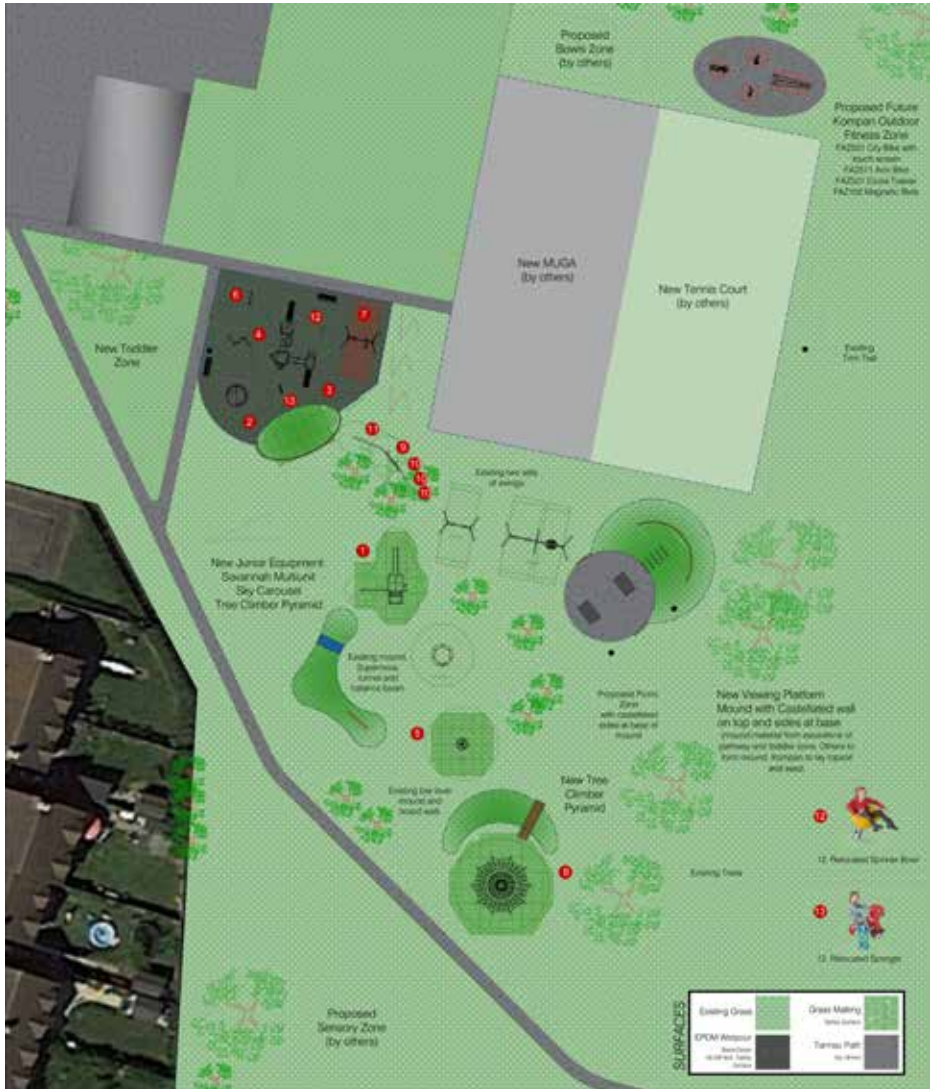
Clifton Junior Zone

This zone will have protective matting around all equipment, as well as social areas built into the landscaping such as raised mounds, seating etc.



Clifton Toddler Zone

This zone will also have grass mounds and seating as well as a safety surface for the whole zone.

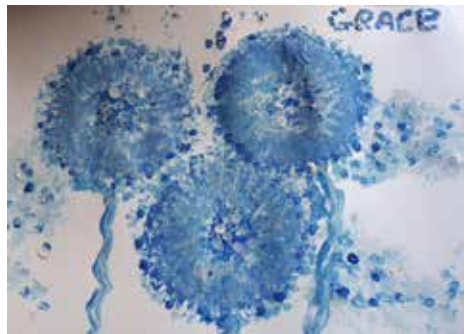


Clifton Zones Overview

The Zones Overview illustrates the locations of new play equipment but the S106 monies will also be used to improve field drainage which will benefit the play areas and the soccer pitch. In addition the monies will provide an opportunity to rejuvenate the bowling green, support the community sensory garden and create other areas that might include adult fitness equipment and a boules court.



Christian Aid Photo Competition
The winning entry (left) by Lizzie Rhoden and runner-up (right) by Isobel Dipple were judged by Michelle Morris.



Christian Aid Children's Art Competition
The winning entry (above left) by Lucy Hill; 2nd place (top right) by Noah Wain, and 3rd place (right) by Grace Gascoigne, all of Clifton. The judge was Mel Williams.

Christian Aid Week in Clifton raised a total of £2,150.

OPEN AIR TEA-ROOMS AT PITLANDS FARM HOLIDAYS

Ian and Alice Mann at Pitlands Farm, Clifton, will be opening an 'Open Air' style Tea Room on the farm from Saturday, 4th July, despite having to delay the opening of their long-awaited Apple Tree Tea Rooms this summer because of Covid-19.

The couple have teamed up with Jo and Charlotte Thompson from Powick (who bake wonderful cakes) and their beautifully converted vintage Rice Horse Box, newly named 'The Apple Box' to turn their gardens into an open air tea room this summer. The Apple Box will be fully licensed offering a range of alcoholic beverages, teas and coffee, homemade cakes, cream teas, afternoon teas, ice creams as well as lots of other treats.

"Customers can rest assured the Apple Box will meet all necessary Covid-19 guidance requirements to ensure a safe environment," says Alice. "We will have plenty of outdoor seating and will be serving all our food and drink in disposables made from compostable or recyclable materials, but if customers would prefer to bring their own cups and plates, chairs or picnic blankets then they are more than welcome to."

Ian and Alice are very keen to support other local businesses by using local suppliers such as Spilsbury & Jones Brewing Company of Orelton, Oldfields Cider of Frith Common, Jan & Phil Gray's milk of Eardiston, Ruby's Fudge of Cotheridge, soft fruit from Chapel Farm in Little Witley and Churchfields Ice Cream of Droitwich, among others.

The Apple Box will be open from Saturday 4th July, 10am-4pm Thursdays, Fridays, Saturdays and Sundays. Dogs are welcome, but for the safety of everyone and other animals, please keep dogs on a lead at all times and clean up after them responsibly. Only food purchased from the Apple Box should be consumed on the premises, and the fishing pools are reserved for the use of holiday guests.

Ian and Alice look forward to welcoming you to Pitlands Farm. "We love the idea of being able to put a little bit of normality back into people lives; tea and cake certainly puts a smile on people's faces," said Alice.



Ian and Alice Mann at Pitlands Farm, Clifton

Shelsley Walsh 2020 Event Update

28 May 2020

Following the recent announcements by Motorsport UK to restart motorsport, we are pleased to announce that the first event of 2020 to be held at Shelsley Walsh will take place on 25/26 July.

The Summer Spree weekend has been held every year and we believe this will be a popular event for competitors who have been waiting patiently to go racing again. Entries for this event have therefore reopened, so anyone that is part of the championships listed will be eligible to submit an entry, the closing date for which is 29 June. Those who have already entered have their entries still in place.

Unfortunately, due to the social distancing rules that are still in place, the event will be held behind closed doors without spectators while there will be restrictions on the number of people that can attend per entry.

The team at Shelsley Walsh are currently finalising detailed plans for the 25/26 July weekend so please keep an eye out for further announcements about this event.

As this is the first event we are able to hold this year, it unfortunately means that events that were due to take place before 25 July will not be held. We are therefore working on a revised schedule for the remainder of the season that we will announce as soon as details are confirmed.

Please bear in mind we are on limited staffing levels at present, so keep an eye out for further announcements through our Shelsley Walsh email list and all our three social media channels.

CLIFTON VILLAGE HALL AGM

Notice is given that the AGM of the village hall will take place on 22nd July 2020, probably at 7.30pm. The exact format, whether on-line or with real people present, will be decided nearer the time.

Jack Whittenbury, Hon. Sec. to the Trustees.

THE SNUG BEAUTY BARN, STOCKTON

In this time of self-isolation, please remember that vouchers are still available at The Snug for you and your loved ones.

There will be no time restriction on when they expire.

Stay safe everyone,

Lots of love, Hazel.

Tel: 07989 529 215



"Until now, I never understood why you got so excited when someone walked past the house."

A POEM IN DEFENCE OF THE MAINTENANCE OF HARPLEY CHURCHYARD

By Roy Dursley

(In defence to a letter appearing in the June edition of the Teme Triangle)

*Harpley Churchyard is a place of beauty,
Overlooked by a couple on grave maintenance duty,
Its natural and serene appeal,
Seems lost on those who strim with zeal,
Throughout the Spring its delights are legion,
To cut nature at source has no sense or reason.*

*It starts with snowdrops, the first sign of Spring,
And follows with primroses which more vibrancy bring,
Then there are bluebells and the rare cuckoo flower,
Which ought not to be savaged by the lawn cutter's power,
For the pretty pale pink of the Lady's Smock,
Ought not to be cut whilst it flowers en bloc.*

*Then follows a profusion of the Bugles deep blue,
And many more flowers of various hue,
As soon as these flowers have withered and seeds thrown,
Comes the time for the Churchyard to be tidied and mown,
It's an error to call such loveliness "neglected"
The letters authors should have more perception attempted.*

*A return to the graveyard will now reveal
The spring flowers have passed and your correspondents should feel
Happier now the grass has begun to be cut.*

*Apart from all else what right have they got,
To expect that grass mowing is someone else's sole lot,
To keep their loved ones resting place tidy and neat,
Takes much time and effort to fully complete,
Nevertheless the job is done discreetly and well,
At the right time of year, as time will soon tell.*

CLIFTON FRIENDSHIP CLUB

Clifton Friendship Club, unable to hold a meeting since the beginning of March, delivered 57 punnets of strawberries and cream to its members in and around the village. "We just wanted to cheer everyone up," said Club Leader, Marie Thompson.

Pictured delivering to Janet Lawrence is Friendship Club member Jackie Gilbert.





NOT EVERYTHING IS CANCELLED

sunshine is not cancelled
spring is not cancelled
love is not cancelled
relationships are not cancelled
reading is not cancelled
naps are not cancelled
devotion is not cancelled
music is not cancelled
dancing is not cancelled
imagination is not cancelled
kindness is not cancelled
conversations are not cancelled
hope is not cancelled



#keeplookingup
SimpleStencils.com

Church Matters

by Ruth Wilson

Often a hymn or song will transport you back to another time or place and a different stage in your life. Morning Has Broken is a well-known favourite and when I see the words I hear Cat Stevens singing and Rick Wakeman playing the piano. There is a feeling of joy and wellbeing soaring through the lyrics and tune.

'Morning Has Broken' was originally published in 1931 in response to a request for a new hymn to give thanks for each new day. The words were written by Eleanor Farjeon, inspired by the beautiful village of Alfriston in East Sussex and written to fit the traditional Scottish Gaelic tune "Bunessan."

*Morning has broken like the first morning
Blackbird has spoken like the first bird
Praise for the singing
Praise for the morning
Praise for them springing fresh from the world*

The words, based on the creation story in Genesis, express joy at creation, the blackbird singing as the first bird in the early morning joining in thanking God for the gift of a new day. The second verse evoking God walking through the Garden of Eden and taking pleasure in his creation, like any gardener appreciating the growth of the plants, conveying the smell of the damp earth, the freshness and promise of the early morning. The final verse makes the experience personal, 'Mine is the sunlight, Mine is the morning' the new day and the possibilities it brings are for each one of us. Our response is to "Praise with elation" for "God's re-creation of the new day."

"Morning has broken" may seem naïve in our current environment of concerns such as greenhouse gases and pollution. We now know that the earth's resources are limited and its beauty is ours to safeguard for the future. However, each new day the beauty of the earth at daybreak is restored and the rising of the morning sun is a symbol of hope for the future. Enjoy the beauty of the Teme Valley and the gardens throughout the summer, praising God for his blessings all around us.

SERVICING & REPAIR ALL TYPES OF GARDEN MACHINERY



BRIAN BUTLER

Clifton-on-Teme
07929 014804 Daytime
01886 812538 Evening

COLLECTION and DELIVERY



**NICK
CHAMPION**

PROPERTY | AUCTIONS | AGRICULTURE | PROFESSIONAL

**YOUR LOCAL PROFESSIONAL,
INDEPENDENT RESIDENTIAL &
RURAL PROPERTY SPECIALIST.**

- SALES
- AUCTIONS
- LETTINGS
- ACQUISITIONS



NICK CHAMPION LTD

16 Teme Street, Tenbury Wells, Worcestershire, WR15 8BA
Tel: 01584 810555 Email: info@nickchampion.co.uk
www.nickchampion.co.uk

PC Troubles?

- PC problems solved
- Broadband connection set-up
- Home network set-up
- Printer and camera problems solved
- Website design service
- Basic PC training at home



*For friendly and local advice and to
book a free consultation contact*

Bernadette Higgins on 07813 302 504
or e-mail: apctrouble@gmail.com

LUXURY CATTERY

Call Lesley on 01886 821154

- New luxury Cattery set in beautiful open countryside. Run by genuine cat lover.
- Fully Licensed and Insured.
- All chalets have heated bedrooms and spacious play runs.
- Special needs and diets catered for.



Kitty's Cattery

Coronation Cottage, Broadwas (Nr. Martley), Worcester, WR6 5NT
www.kittycattery.co.uk kittycattery@hotmail.co.uk

TAYLORS CONSERVATORY CARE



Office: 01886 812424
Joe Taylor: 07801 281821
Richard Taylor: 07850 424782
joeytaylorccc@hotmail.co.uk
taylors-conservatorycar.co.uk

Sales • Service • Repair

SUPPLY • INSTALLATION • AFTER SALES CARE • RE-ROOFING

Equipre for:

Conservatory Repairs Replacement Glass Units
Conservatory Reroofing Car Ports
New Conservatories Greenhouses
Doors and Windows

Please phone for Free Quotation • Fence Registration No. 18796

Family Run Business. Established over 30 years



RED KITE Pest Control



&
Wildlife Management

Combining Tradition and Innovation

For all your local Pest Control requirements
Flexible Contracts ~ Individual Treatments
BPCA and NPTA Qualified

All **INSECT** Pests
All **RODENT** Pests
All **WILDLIFE** Pests

Specialized Trapping service
Pest Prevention and Proofing
Cleansing, Decontamination, Disinfection

Free Advice
Free no obligation Quotations

Telephone **Andy Staples on:**
07977 044987 / 01886 832730

TVA

TEME VALLEY ACCOUNTS

Bookkeeping VAT
PAYE Sage Accounting
Tax Returns Draft Accounts

Contact: Claire on
Tel: 01584 881708 or 07731 010099
Email: Claire.tva-accounts@outlook.com

Party / Business / Reception / Function

CLIFTON VILLAGE HALL

Three meeting rooms (2 – 120 people)
Modern, well equipped kitchen
with crockery, glasses etc.
Good parking in central location

**Bookings: 01886-812464 / 812238/
812969 / 812335 or
hallshire.com**



Home Tutoring

KS2 English and Maths
English Literature and Language
to A Level

Beginner's **French and Italian**
Latin and Classical Greek to GCSE
Beginner's piano lessons

Paul Tiffany MA, PGCE
Catherine Owen MA, PGCE

Both DBS checked
01885 410229
pltiffany@aol.com



Self Storage Units

20ft Shipping Containers
at Stanford Bridge

Under cover
Security lighting

Please contact Alex
on 07973 624318
or 07966 865015



S H E L S L E Y

VILLAGE HALL FOR HIRE

Set in beautiful surroundings
(with french windows leading onto terrace)

Close to the river and hillclimb

Well equipped kitchen • Bar available
Ideal for meetings, dances, parties etc.

VERY REASONABLE RATES

Contact for bookings

Dave Bates 01886 812551
www.shelsleys-vh.uk



~ Bespoke and Ready-Made Picture Frames ~

Unit 1 Maylite Trading Estate, Martley, WR6 6PQ
Store open Mon-Fri 8:30am-5pm
Phone: 01886 888766

We frame anything...

~ pictures ~ 3D objects ~ certificates ~ t-shirts ~
~ needlework ~ medals ~ memorabilia ~
and more!

~ www.Framing-Marvellous.co.uk ~

TEME INDUSTRIES

MOTO-X BIKES, ACCESSORIES & CLOTHING
BMX • SCOOTER • SKATE
FISHING TACKLE & BAIT

Visit us instore:

Mon-Fri 9am-5pm | Sat 8:30-11am
Unit 1 Maylite Trading Estate, Martley, WR6 6PQ

Bike services and repairs undertaken - BMX, Cycle and Moto-X

www.teme-industries.com

Paul the Painter

Professional painter & decorator
in Clifton-upon-Teme

Interior & exterior, from a single room to a whole house

Tel 01886 812168 / 07759 298754
E-mail paulthepainter23@msn.com



THE ORCHARD
TAMERS

Laurence Green - 07809 495848
laurence@theorchardtammers.co.uk
www.theorchardtammers.co.uk

WE FIX FRUIT TREES & MAKE WILDLIFE WELCOME

- 1 garden tree or 10 acres
- Gardening for wildlife
- Help, advice and training
- Great present idea!

Are Your Locks Behaving Badly

Check A Lock Fix A Lock

- No Call Out Charge •
- Free Onsite Estimates •

All Types of Door & Window Locks
Opened • Repaired • Serviced
Jammed Doors • Faulty Locks
Lost • Broken or Poorly Cut Keys
Wooden-UPVC Door & Window
Multi-Point Lock Repair Specialist
Doors Adjusted & Realigned
No Job Too Big or Small
For More Advise Call Stewart

THE LOCKSMITH

01905 570 999 07871 44 20 11

Local Reliable Independent Locksmith

www.locksmithworcestershireshire.co.uk



Contact: Juliet Twinberrow
Tel: 01886 821408 Mob: 07772 799754
Email: info@housevet.co.uk
www.housevet.co.uk

Lizzie's
Chauffeur Services



Liz Whittaker - lady chauffeur
Affordable Comfort Travel in Style
Transport solutions for up to eight passengers.
All air and seaport. Wedding and sporting events.
Local and National journeys. **07814 006179**



**For an Affordable
& Reliable Electrician
Choose REWIRED!**

 **The Power Behind
Teme Valley....**

01886 853 011
07421 748 288

www.rewired-worcester.co.uk



FUTURE EVENTS:

Friday 4th October Dan Greenaway
Friday 1st November Tenbury Young
Farmers Firework and
bonfire night (open to all)
Friday 6th December Big Sister

Opening times:

Fridays 5pm till midnight,
Saturdays 12noon till midnight
Sundays 12noon til 8pm

Only Open the first weekend of the month

the **snug**

beauty massage & therapies

revitalise & relax in cosy barn
setting in Stockton, Teme Valley

07989 529215

please call for an appointment

latest technology in non-surgical facelift, oxygen facials & glycopeels

phone us to book a complimentary demo

- T.V. •Video •Audio
- Electronic Repairs
- Microwave Ovens

DAVE PARKER

01885 410711

Mobile 07790 423158

Prompt efficient service at competitive rates

CLIFTON ROAD CLOSURES

The Old Road in Clifton will be closed for about three days from Tuesday 7th July for telephone installation work.

Pound Lane will also be closed from Monday 20th July for up to 26 days for work to be carried out along a 50 yard stretch of the road from its junction with the B4204. Diversions will be in operation.

Draft Abbreviated Minutes of the virtual Annual Meeting of The Shelsleys Parish Council Meeting on Zoom May 19th 2020

Present: Dr L Taylor (Chairman), D Styles, Mrs L Hutton, Mrs J Hammond, Mrs V Jones and Mrs K Metcalfe, also attending Dr K Pollock and the Clerk.

Election of the Chairman: Dr Laura Taylor agreed to remain as Chairman. Confirmation of Vice Chairman deferred until July 7th 2020

Apologies: W Sutherland, D Bates and J Stinton accepted and Councillor Paethorpe.

Declaration of Interest: L Hutton for Planning.

Minutes: The minutes of the meeting held on March 10th 2020 were approved and will be physically signed as a true record when appropriate.

Public Question Time: None. Financial Regulations, Risk Assessment and Insurance. Insurance cover was deemed appropriate and the premium approved.

Individual Councillors appointed to offices: Councillor Metcalfe will continue as Parish Paths Warden, other officer appointments deferred until the next meeting. Lengthsman: The lengthsman's Annual Contract with the Parish Council, will be renewed on terms agreed at the last meeting. The Lengthsman Rob Wilkes will be thanked for his work throughout the parish.

Highways & Footpaths: WCC has agreed that with the receipt of the risk assessment by the clerk, the Lengthsman has been approved to resume work following the suspension due to Covid-19. The funding by WCC for the lengthsman for 2020 2021 is £2365.20.

The footpath diversion at Shelsley Walsh, the application has been withdrawn by MAC.

County and District Councillor Reports: written reports will be available on the website.

Planning: 20/00547/HP The Leys Shelsley Beauchamp WR6 6RB construction of an extension to house a home-gym, sauna and swimming pool. The Parish Council agreed to support the application. 20/00471/FUL Camp Farm, Camp Lane, Shelsley Beauchamp WR6 6JQ new lambing shed and pen for agricultural use. Parish Council agreed to support the application. Councillor Hutton took no part in the discussion.

Progress Reports: Broadband self-dig. Information received from WCC which may enable isolated properties to benefit from Superfast Broadband received. The Clerk and Councillor Jones to request more information in order to discuss with appropriate residents.

Correspondence. All items not previously emailed were circulated.

Finance: The following payments were approved:

Insurance £330.00

Clerk's salary and expenses £559.48

CALC subscription £297.57

Monies received

Precept £2000

Councillors' reports and items for future agenda: The Memory Bank (MHDC) details will be sent to Teme Triangle. All items for future agenda to be notified by email.

The Chairman thanked the members of the Shelsley Helpline for their incredible and fantastic work during this Covid-19 pandemic, she is very proud of them all.

Date of next Parish Council meeting: July 7th 2020 on a format to be decided.
The meeting concluded at 7.40. J Speyer Clerk May 20th 2020.
Full minutes, Chairman's report and future agenda are available on the WCC
www.worcestershire.gov.uk/myparish/ website or as a link from the Teme Triangle website.

CLIFTON-UPON-TEME PARISH COUNCIL

DRAFT Minutes of a virtual Meeting of the Parish Council held Thursday 4th June 2020.

Present: Councillors J. Bowden (Chairman), A. Henry (Vice-Chairman), R. Henry, C. Haywood, J. Dawson & S. Haywood. Also present: M. Alexander (Clerk) and public J. Johns & C. Hurley.

Apologies: County Cllr K. Pollock, Ward Cllr C. Palethorpe, Councillor J. Collins.

Welcome: The Chairman welcomed everyone to the meeting. Clifton Hill Helpers were thanked by the meeting for all their support locally during the CV-19 pandemic. D. Moore was thanked for supplying turkey for the recent roast dinners.

Declarations of Prejudicial & Pecuniary Interests: None.

Democratic Public Time: Matters raised by Residents to be considered at the meeting – no matters received.

To agree the Minutes of a virtual meeting held 7th May 2020 – Minutes were agreed as a true record. Proposed Cllr C. Haywood, seconded Cllr A. Henry. All agreed.

District & County Councillor Reports: Reports to be uploaded to the website. Other updates as circulated to Councillors. MHDC funding for local businesses was noted and will be shared via social media. The Council noted the s.278 closure of Pound Lane from 20th July and asked the Clerk to query the length of closure.

Financial & Governance Matters: Payments agreed as per the schedule – Michelle Alexander - Clerk salary April £456.47; Michelle Alexander - Clerks expenses - phone / mileage £25.95.

Lengthsman contract 2020-21 was agreed - Clerk to forward to Highways.

Internal audit with T. Dipple until end of June. Next agenda for approval of 2019-20 accounts and governance statement. To be sent to External Auditor by 31st July.

Parish Matters: S.106 Community Transport – it has been agreed to place this matter on hold until further guidance is received from Worcs CC Officer.

Section 106 Committee update: C. Hurley's report had been circulated by email. It was confirmed that £30k had been removed from the budget as being a PC contribution. The school is putting together a sports plan via Govt funding and is hoping to link to CFAF plans and future opportunities. Drainage costs for the field are being explored currently. Pavilion options are also being explored re design / future usage / costs. The Bowls Club is now being discussed including a refurbishment of the site (green & surrounds).

Planning Matters: Applications considered –

20/00540/FUL – Church House Farm, Church Road Clifton WR6 6DJ – variation of approved plans cond.2 (13/01327/FUL) development of 17 dwellings on the site of an existing farmstead / provision of a new farmhouse, farm cottage and 4 agricultural buildings. No objection / s.106 comment submitted 01/06/2020.

20/00549/CU – Land at OS 7005 6123, Clifton – outdoor riding arena with timber post and rail fencing – address amended. No objection agreed.

20/00455/LB & 20/00454/HP – Cockshot Cottage, Clifton WR6 6DY – one and half storey extension located at the north end of the existing extension. No objection agreed.

Cllr S. Haywood commented that some of the 30 mph signs will be out of step with the development at Church House Farm and we may also need to relocate planned white gates at the village boundary in the future.

Highways Matters: Lengthsman Scheme has now been restarted with a CV-19 risk assessment approved via Worcs CC. Outstanding tasks to be listed by the Clerk and sent to R. Wilks, to include rail missing on the fence near the Pound Meadows (previously quoted), play equipment removal (as agreed), gully outside the BP Hut needs cleaning out.

Clerk to check with Highways about the scheduling of the yellow lines opposite the Lion PH.

Footpaths Order at Shelsley Walsh has been withdrawn. Road closure notices noted as circulated.

Correspondence: Trees at Pound Meadow – Cllr C. Haywood agreed to contact the resident concerned. Saxon Close concerns raised were noted and it was agreed that the matter was best managed via Worcs CC & MHDC Officers. Blueshot Meadow tree felling – Cllr S. Haywood to do a site visit asap and report to the Clerk, who would action as appropriate.

Councillors Reports & Items for Future Agendas: Bins at Pound Lane requested at the May meeting - decision still with MHDC. Clerk to chase up. Also, the bin at the Meadows (Lovells development). Field next to the village hall has temp. fenced area currently (behind Saxon Close) which makes it difficult to social distance when using the path. Cllr Bowden to check with the landowner re options. Village Green flower tubs – it was agreed that the Clerk should recirculate the information from Cllr A. Henry for approval to purchase x4 half barrels. Thanks were given to J. Johns for the donation of a planted flower tub for the village and to Cllr S. Haywood for planting one under the new PC notice board.

Next meeting to be held Thursday 2nd July 2020 – arrangements to be confirmed.

LOWER SAPEY NEWS With Margaret Griffiths

Another month, another *Teme Triangle* and hopefully, all of us are surviving in these strange and frightening times. The wonderful sunshine and the amazing bird song has helped us to survive these ten weeks and maybe the sun will return soon, but with rain during the nights for farmers and gardeners.

We look forward to the opening of our Churches on June 15th, but initially for private worship only, then maybe in August for full services. We would like to thank all in our Team for giving us regular on-line services and I must say, there seems to be a lot of local talent! Thanks are also due to the Clifton Hill Helpers group who delivered hot turkey meals to many isolated residents on VE Day. We missed all the celebrations, but maybe we can make up for this on VJ Day. Thank you Marie and the Friendship Club who sent members a punnet of strawberries and a pot of cream recently. This was so lovely, especially on such a hot May day. More thanks to delivery men (and women) who brought us milk, papers, post and to the binmen and utilities workers. I feel I should thank the Amazon drivers, who have worn a path to our door with my husband's orders. He has been very busy during the lockdown! Of course, a huge thank you to the NHS and Care workers, many of whom live locally. A personal thank you to our good friends who collect our shopping weekly from a Worcester supermarket and keep us going. We are 80-year-olds and certainly still wouldn't risk a trip to town just yet, so thank you Howard and Sue. What would we do without you.

In response to the letter of criticism of our Churchyard which was published last month, a local resident, Roy Dursley has written a lovely poem, which the Editor is kindly publishing. Roy and his family are fairly new to Harpley and a very welcome addition to our small community, especially as Roy has joined the Church choir. He is obviously a man of many talents. We do have a Churchyard Clearance Team which meets regularly during the spring and summer and if you would like to volunteer to join our ageing group, you will be very welcome. We continue to strive to achieve the Gold Eco Award which would better the Silver Eco award for the Churchyard and Church which we have already been awarded. Take care and stay safe.

TEME VALLEY WILDLIFE

Whilst pulling up huge amounts of yards-long streamers of goose-grass, clearly planning a takeover of my garden from behind a large shrub, I pondered whether there was enough to say about this commonplace weed to fill a whole article. Stop reading now if you think the answer should be no.

As a child, I was always amused by throwing its sticky stems at friends or family when out on a country walk and I hope that, even in the days of the smartphone, some children still do the same. Goose-grass, perhaps more correctly called cleavers, has many local names; sticky willy, herriff, gosling weed, sticky bobs and claggy meggie, to name but a few. Botanically termed *Galium aparine*, it is an annual member of the bedstraw family which can put on an impressive 10 feet of growth in just one season. In common with nettles and elderberries it only grows near human habitation, where phosphate from manure is available in sufficiently high concentrations in the soil.

Thin bright green leaves are arranged in whorls of 6-8 around a hollow four-sided stem and most parts, including the double fruits, are covered with backward facing prickles. These are designed to hitch onto a passing furry animal then to reach and conquer pastures new. The tiny inconspicuous flowers appear briefly between June and August and comprise four minute white petals.

The goose and gosling names came about because it was traditionally fed to geese, and they appear to like it too, but it was also once eaten by humans. In old herbals, cooked in a broth, it was said to “keep them lank and lean that are apt to grow fat”. I found a modern-day foragers’ recipe for an interesting-sounding herb and potato soup using the leaves, but I can’t recommend it as I haven’t given it a go. Neither have I roasted and ground the seeds to make a substitute for coffee, as in another recipe I found. Both the leaves and seeds are so tiny that I don’t think the time spent in picking them can be justified, but I can certainly see how they could keep you lank and lean.

A creature with a genuine taste for the seeds is the bank vole. I once spotted one of these little animals clambering gingerly up a tall stem to reach them. It was so intent on its goal that it didn’t even notice me watching quietly as it climbed. A completely different use for the seeds was discovered by Bedfordshire lacemakers, who slipped them over the ends of their brass pins to make their work easier on the fingers. The tall but rather weak growth of the plant is designed to allow it to bend against a more robust structure which it then uses as a support. It commonly grows against hedges, but I’d advise not to let it stay there, particularly if the hedge is newly planted or newly laid. As a local countryman once told us when we first moved to the Teme valley twenty-five years ago, “goose-grass can kill a hedge, can goose-grass”.

We hope that the next meeting of the Teme Valley Wildlife Group will be on Thursday July 9th, 2020, when we welcome back James Woodend. His talk is called “Bears in Canada”. Those of you who so enjoyed his previous talk have requested this one. The meeting will be held at Stoke Bliss and Kyre village hall, WR15 8RR, at 7:30pm. It is just £2 on the door and everybody is most welcome.

J & S Trade Supplies



TRADE SUPPLIES

Suppliers and Installers of:

*Aluminium Windows
Aluminium Bi-Folding Doors
Hardwood and Softwood Bespoke Timber Windows,
Doors and Conservatories including
Grade I and Grade II listed
Secondary Glazing and Replacement Sealed Glass Units
UPVC Windows, Doors and Conservatories
Garage Doors, Fascia and Soffits
We now also specialise in small building projects including
carpentry and joinery*

PLEASE CALL FOR A FREE NO OBLIGATION QUOTATION

Haven Nurseries
Bank Road
Little Witley
Nr Worcester
WR6 6LR
Tel: 07966-804007
Tel/Fax: 01886-888024
VAT No: 824 6536 21
Partners: JT Bull & SR Bull

COLIN GRIFFITHS

GROUNDWORKS CONTRACTOR

MARTLEY, WORCESTERSHIRE

*"A Business
built on
a solid
foundation"*

Main Sewer Connections
Septic Tanks

Foundations to D.P.C.
Concrete & Tarmacing
Site Clearance

Foul & Storm Drainage etc.

*For all your
private &
industrial
groundworks*

**For a personal and efficient service
please contact Colin on,**

TEL. 01886 821283 MOB. 07836 772501

BILLS GARDEN GATES AND TIMBER PRODUCTS

- Garden Furniture
- Log Stores
- Chicken Runs
- Aviaries



- Storage
- Decking
- Fences
- Your Choice



...and more made to order locally from FSC treated or untreated timber. Bespoke and renovations also undertaken

For more information contact Bill

- Tel: 07580 274999
- Great Witley 01299 896681
- Website: www.billsgardengates.co.uk
- Email: billsgardengates@btinternet.com



www.facebook.com/billsgardengates

Eclipse HomeCare



- Hourly Care
- Daily Care
- Live in Care

Making a Difference Across Worcestershire



Join one of our 'Award Winning' teams rated by the Care Quality Commission as Good, Good and Outstanding

01905 641 070
www.eclipsehomecare.co.uk

LEE JAMES CARPENTRY & JOINERY

Qualified and experienced in all aspects of carpentry

- Kitchens supplied and fitted
- Roofing
- 1st and 2nd Fix
- Renovations – old & new
- Oak timber frames
- Plastic fascia & soffits
- Loft conversions
- Doors & windows

Quality and Satisfaction Guaranteed

For free quotes, competitive prices and a professional service phone:

**(01886) 821151
07779 073870**

Chimney Sweep

Andy Johnson

- Certificate issued
- Weekend/Evening sweeps available
- Traditional brush/Power sweep



01886 821933 / 07798 790913



SUE BRATTON PILATES CLASSES

Daily classes locally including seated classes
Ante and post-natal ladies welcome

Please contact **Sue Bratton** for more details or to book a place **07974 343609** or sue579@icloud.com



Naturally beautiful & fragrant
British flowers for all occasions
kate@camomilecornflowers.co.uk
01886 812184 07887 706147

adrianmackwell

AUCTIONEER & VALUER

m 07554 004028 t 01886 812575 e amackwell@gmail.com

Custard Cottage, Clifton on Teme, Worcestershire, WR6 6EW

Specialist valuations of Antiques,
Fine Art and House contents for:

Probate/Inheritance tax,
Sale by Auction, Marital Separation
Sales by auction arranged
House clearance service available

www.adrianmackwell.com

PROBATE/INHERITANCE TAX

"Sympathetic and straightforward"

CLEARANCE

"Thorough and efficient"

AUCTION

"Honest and approachable"

INSURANCE

"Clarity and discretion"

www.adrianmackwell.com



- Bookkeeping Services
- Personal Tax Returns
- VAT Returns
- Payroll
- Management Accounts
- Year End Accounts
- Corporation Tax Returns
- Budgeting & Forecasting

Rachel Perks

ACMA CGMA FIAB

Tel: 07484 161382

rachel@perksaccountancy.co.uk

www.perksaccountancy.co.uk

Laugherne Farm House, Martley
Worcestershire, WR6 6QB

For up-to-date information on what wildlife is being seen in the area, or to give us your sightings or comments, visit our Facebook page. Our programme of events, bird survey and archive photographs are available on our website www.temevalleywildlife.co.uk. We normally hold meetings on the second Thursday of the month. All are welcome. Contact us by telephone on 01584 881 397 or by email at twwg@outlook.com.



AND FINALLY...

A reminder again that Teme Triangle has a Facebook page – so you can keep abreast of all the latest news on our site: www.facebook.com/TemeTriangle. Also, our printed magazine will continue to be available in all local shops and community spaces so you can choose how and when to keep up to date. Do keep sending us your news and photos – we all need to read positive stories in these strange times.....



FIND WHAT YOU NEED - SELL WHAT YOU DON'T

- Ladies' Golf Clubs together with Bag and Trolley, all in good condition. Generous offers considered. All proceeds to All Saints Church, Shelsley Beauchamp. Jane Froggatt, Tel: 01886 812 215 or email jane.froggatt@yahoo.com.
- HP Envy 5530 colour printer (not Windows 10 compatible). Full working order – print, scan, copy. 3 unused ink cartridges also included. Free to a good home. Can be delivered. Tel: 01584 881 279.

**[To advertise items in the next issue's Temebay,
contact editortemetriangle@gmail.com]**



Tom Spilsbury checking the hops for the 'Spilsbury and Jones Brewing Company.

Your Local Agent Since 1898

- Estate & Letting Agents
- Chartered Surveyors & Valuers
- Planning Consultants
- Auctioneers
- Land & Estate Management
- Sale and Letting of Rural and Urban Property
- RICS Registered Valuers
- Landlord & Tenant Negotiations
- Basic Payment Scheme & Associated Matters



The Estate Office · Hill House · Great Willey · Nr Worcester · WR6 6JB

www.gherbertbanks.co.uk

The Village Stores

27 THE VILLAGE, CLIFTON-UPON-TEME WR6 6EN

01886 812303



Open 7am-7pm Mon-Fri 7am-6pm Saturday 9am-12 noon Sunday

Contributions for the next (September) edition by Friday, 7 August 2020 please

Printed by Orphans Press of Leominster Tel: 01568 612460