

November 2018

Teme TRIANGLE

Clifton upon Teme • The Shelsleys • Lower Sapey



The Clifton Hand Bell Ringers

In this edition

- ✿ Church hand bells and harvest suppers
- ✿ Charity coffee mornings and Christmas fayres
- ✿ Timber sports champions
- ✿ Clubs and talks galore
- ✿ All your regular Parish news
- ✿ And much, much more...

temebay
OPEN

www.temetriangle.net

Free to Residents



Barry Hodgetts presenting his beautifully crafted walking stick to the raffle winner Rosemary Holloway, at the Shelsley Harvest supper

GUEST EDITOR

Louise Hutton

editortemetriangle@gmail.com

EDITOR / CLIFTON NEWS / WEBSITE:

Jerry Johns: 01886 812304

crown.house@polperropress.co.uk

SHELSELEYS NEWS:

Michelle Whitefoot: 01886 812779

michelle@whitefootpr.co.uk

LOWER SAPEY NEWS:

Marion West: 01886 853249

marionjeanwest@googlemail.com

ADVERTISING/SPONSORSHIP:

Andrew and Anna Brazier: 01886 887898

teme.triangle@thebraziers.co.uk

DISTRIBUTION:

Terry Smith: 01886 812180

tsmith150@btinternet.com

If you or your organisation would like to sponsor *Teme Triangle* please contact Andrew Brazier. The cost of producing TT is £7 per household per year. Donations are encouraged, to: Alden's Farm, Barbers Lane, Martley, Worcester WR6 6QD (cheques made payable to Teme Triangle Community Magazine).

In addition to the usual main distribution points, copies of *Teme Triangle* are also available to pick up outside 8 The Bungalows, Shelsley Beauchamp, WR6 6RD

Opinions expressed in this publication are not necessarily those of the editorial team. Teme Triangle is not responsible for goods and services advertised. Contributions may be edited at the discretion of the editor.

Our front cover photo shows:

The current group of Clifton hand bell ringers

WELCOME to the November 2018 edition of Teme Triangle. I love this time of year in our beautiful valley - the landscape is slowly preparing itself for winter and the colours are just wonderful. After the wet and windy start to October, we are now enjoying beautiful blue skies and stunning red sunsets. It won't be long before fires are being lit and we wake up to frosty mornings.

However, before we turn to Winter and dare I say it Christmas, this edition is full of all the activities that you, our readers, have been doing. Autumn is certainly a busy place in the Teme Valley! I do hope that you enjoy the read....

CLIFTON HANDBELLS REPAIRED

The current group of Clifton hand bell ringers (see photo on the front cover) have been playing the bells at various events since March 2015, using bells that were originally purchased by fundraising in the 1980's.

Since the purchase of the bells all those years ago they had not had any maintenance, and with wobbly handles and missing screws, it was clear they needed a bit of care and attention. With a quote to repair them coming in from the last remaining foundry at over £1,000, they embarked on their fundraising.

"Thanks to the support and generosity of the community at a number of fundraising events arranged we raised £890 towards the refurbishment of the bells, gloves to protect them, lights for music stands (useful in dimly lit churches) and on-going costs such as insurance," said Julia Haywood. "The summer break gave a window in which to get the bells repaired and so a small loan was taken out so that we could ship the bells off to London."

The bells are now back and the group would very much like to share them with the community whilst they continue their fundraising campaign to repay the loan and purchase specially-made carry cases to protect them for future generations.

Come along and join them at a Coffee Morning on Saturday, 17 November, in Clifton village hall from 10am - 12pm. As well as hearing the bells played, there will be a small exhibition of photos taken of the bells during the refurbishment and also displays of handicrafts made by people in the local community. Cakes will also be on sale to purchase.

CLIFTON'S MACMILLAN COFFEE MORNING

Clifton Village Stores proprietors, Beverley and Peter Richards, raised a grand total of £373.36 at a Macmillan coffee morning last month. The event was part of the annual worldwide Coffee Morning for Macmillan Cancer Support services.



Pictured with Beverley Richards (right) are Lilian Williams (centre) and Laura Richards.

ALL CHANGE AT THE LION, CLIFTON

In a surprise change of management at the Lion Inn in Clifton last month (October), chef Alexis de Naray and partner have taken over from Steve and Debbie Bruce.

Alexis was previously working as an area chef for Compass Catering, having recently returned from a spell in California. His previous experience includes a position as head chef at Attingham Park, a National Trust property near Shrewsbury and group head chef for the Inception Group, having studied at the Prue Leith Cookery School and worked for Gordon Ramsey.



Alexis' partner, Nitika Cole, has international catering and hospitality experience in Cambodia and Australia.

The Bruce family, who took over the Lion in August 2017, have moved back to Bishop's Castle where they were previously at the Castle Hotel.

TIMBER SPORTS CHAMPIONS DESCEND ON CLIFTON

The Teme Valley echoed to the sound of wood-chopping last month as visiting teams of timber sports competitors from Australia, New Zealand and the USA prepared for the Stihl Timber Sports World Championship held in Liverpool last month (October).

The axemen were training at different locations around Clifton under the guidance of Clifton's own timber sports champion, Spike Milton.

Spike, a former British and European Champion as well as a former runner-up World Champion, is now Global Sports Director for Stihl, organisers of the Team World Championship and Individual World Championship events that took place at the Echo Arena, Liverpool.

"Although I retired from full-time competition with Stihl four years ago, I'm still training timber sports athletes around the world," says Spike. "And I've been heavily involved with the World Championships in October, mainly as a trouble shooter behind the scenes."

Even at the age of 51, Spike hasn't given up competition completely. Last winter he travelled to New Zealand to take part in a series of timber sports events over there.



HYMNS AND PIMMS ECUMENICAL SERVICE AT ALL SAINTS

More than 70 people from Martley, Clifton, Harpley and the Shelsleys attended the first ecumenical service at All Saints Church in Shelsley Beauchamp last month organised by the West Worcestershire Rural Churches and Churches Together in the Teme Valley.



*Pictured are Des Robson (left) and Canon David Sherwin who officiated.
The service was augmented by members of the Lower Sapey choir.*

CLIFTON GUIDES CHRISTMAS FAYRE & BINGO

Local businesses will once again be holding a Christmas Fayre table top sale at Clifton village hall on Sunday, 2nd December, from 10am until 1pm in aid of the Clifton Girl Guides, Brownies and Rainbows. The sale will include gifts, decorations, cakes, preserves and other tasty treats. Entry is £2, which includes a drink and homemade cake.

For more information, contact Angie Griffiths on: angiegriffiths@aol.com or 07957 462 519.

There will also be a Christmas Bingo evening in aid of the 1st Clifton Guides and St Michael's Hospice at Great Witley village hall on Friday, 23rd November. Eyes down at 7.30pm. Any queries please contact Angie Griffiths. Prize donations gratefully received.

BARBARA WILDAY

Barbara Wilday of Clifton, who died on 27th September aged 74, was the first female reader to our parishes, a particular challenge for the Shelsleys, breaking the mould. She produced a monthly 'Care & Prayer' newsletter and introduced the Christingle service to St Kenelm's. In 2014 she was proud to be honoured with Reader Emeritus. Barbara dedicated her life to the church and helping others and also served on the Parish Council. She will be sadly missed by her family and the community.



NIC SPROSON opticians

52 Barbourne Road, Worcester WR1 1JA

*Professional Eye Care
Exceptional Eyewear*

Contact Lens Specialists
Saturday and Evening Appointments
Patient Car Park

Tel: 01905 27327

www.nicsprosontheoptician.co.uk

SEASONED HARDWOOD FIREWOOD

CUT & SPLIT TO REQUIRED SIZE

Delivered in 1.2 metre bags with crane vehicle

**NO STACKING -
NO MESS -
NO PROBLEMS**

Contact David 07866 441154

A WOMAN'S TOUCH!



LADY DECORATORS

PAINTING, WALLPAPERING
TILING (WALLS & FLOORS)
INTERIOR DESIGN & ADVICE

CLAIRE LENNARD

01886 889099 ~ 07710 469427
THE OAST HOUSE, MARTLEY, WR6 6QB



REDCABIN COMPUTERS

Friendly and efficient service for your home
&

Business computer system

New & used computers

Upgrades

Software

Hardware

Wired & Wireless Networking

Broadband help and setup

01885 483 839

01547 530 271

07973 358 124

sales@redcabin.net

Meadows Soft Furnishings

by Tracey Birks

Bespoke handmade curtains, blinds,
soft furnishings and lampshades
designed and made for you

No obligation home consultation

tracey@meadows-soft-furnishings.co.uk
www.meadows-soft-furnishings.co.uk
01886 812583 or 07831 818104

MINDFULNESS & MEDITATION

Short courses introducing beginners to the
meaning and practice of mindfulness &
meditation. For more information

Contact Nicky: localyoga@aol.com
07749 176 091



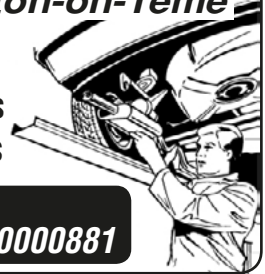
A.M. JONES

*Harpley Works
Clifton-on-Teme*

- MOT Repairs
- Servicing
- Accident Repairs
- Tyres
- Batteries
- Exhausts

Tel/Fax: 01886 853 530

Mobile: 07970000881



WORCESTERSHIRE WILLS

Est. 2013
Clare Burden

MEMBER OF THE INSTITUTE OF
PROFESSIONAL WILL WRITERS
SPECIALISING IN WILL DRAFTING AND
POWERS OF ATTORNEY

APPROACHABLE AND FRIENDLY

COMPETITIVE RATES

FULLY CRB CHECKED

HOME VISITS AND EVENINGS IF REQUIRED

Practising as a successful family lawyer for 8 years until taking time off to have a family, Clare has now set up her own company providing private client services.

To arrange a friendly and confidential consultation,
Contact Clare Burden

T. 01299 879826
M. 07855 350245

E. clare@worcestershiREWILLS.com
worcestershiREWILLS.com

Professional Dog
Walking
& PetCare Services.



www.petsadventures.com

Contact Ruth on: 07736151130 or
email: ruth@petsadventures.com

We are delighted to offer the following
services in the WR6 area:

- Professional Dog Walking
- Dog Home Boarding
- Doggy Daycare
- Pet Companion & Home Visits
- Pet Taxi Service
- Chicken & Small Animal Boarding

DBS



A. H. CALDICOTT & SONS

Funeral Directors

15 MARKET STREET,
TENBURY WELLS, WORCESTERSHIRE
TELEPHONE: 01584 810281
FAX: 01584 811420

*A family
run business
established 1919*

*Burials
Cremations
Chapel of Rest*



- Woodburning & Multifuel Stoves
- Stove Spares & Repairs
- Glass, Ropes, Bricks, Baffles, Cleaners
- Chimney Liner Kits & Flue Pipes
- Kiln Dried Logs, Kindling and Firelighters

01886 812452
www.is-stoves.co.uk

Showroom & Online Shop

Steps Farm
Clifton Upon Teme
Worcester
WR6 6EN

JEREMY MASSEY

Qualified Electrician



Registered
Electrician
– BS7671

- ✓ Household Electrical work
- ✓ Fast, Reliable & Friendly
- ✓ Very high standards met
- ✓ Inspection & Testing

Contact: 01886 888493

West Wind Counselling



Sarah Jeffery MBACP Sapey Common Worcs WR6

For help and support
with emotional pain or distress
including:

- depression, stress, anger or anxiety
- bereavement, loss, setbacks, grief
- low confidence or self-esteem
- relationship difficulties or other troubles

T: 07432 078087

E: westwindcounselling@gmail.com

W: www.west-wind-counselling.co.uk

Please call or email me for
a first confidential discussion.

I look forward to hearing from you.

"It was such a relief to find someone to talk to, who understands and can help me to find my way. I would recommend counselling with Sarah to anyone who is struggling to cope." (Client RP)



Gareth Vaughan Counselling
Bereavement – Depression – Anxiety
Areley Kings – Astley Cross
07544 518276
www.gareth-vaughan.co.uk

ZED YOGA

Yoga classes for adults of all ages:

- Broadwas Village Hall, WR6 5NG
Tuesday mornings and evenings
- Hallow Parish Hall, WR2 6PP
Wednesday mornings

For more information or to book
please contact Zoe Herington:
email: zedyoga.booking@gmail.com
tel: 07962 981456



THE MANOR ARMS

ABBERLEY

Open 12pm - 11pm Every Day
Call 01299 890300



A beautifully refurbished traditional village pub with locally
sourced fresh food and ales.

*Our Head Chef sources top quality local ingredients to create
traditional dishes and exciting specials.*

Overnight stays in our beautiful rooms, available this Autumn!

*You and your guests can be sure of a warm welcome, we look
forward to seeing you soon.*

*Free function room available for local clubs, meetings,
special events and parties.*

The Manor Arms Inn, Abberley Village, Worcestershire WR6 6BN

www.themanorarms.co.uk

Follow us on Facebook and Twitter for news and events.



The Manor Arms Inn Abberley



ManorArmsInn

A. R. VERRY

PLUMBING AND HEATING

Commercial and domestic oil
fired installations and servicing,
including Agas and Rayburns

01886 853023

- T.V. •Video •Audio
- Electronic Repairs
- Microwave Ovens

DAVE PARKER

01885 410711

Mobile 07790 423158

Prompt efficient service at competitive rates

Hilda Webb BSc, QTS, AMBDA

MATHS TUITION - ALL LEVELS
UP TO GCSE GRADE

SPECIALIST TUITION FOR
DYSCALCULIA & DYSLEXIA

01886 812223

THE OLD SCHOOL, SHELSLEY BEAUCHAMP WR6 6RA

C.L. GIBBS
BUILDERS

EXTENSIONS • ALTERATIONS
PLASTERING • UPVC WINDOWS
ROOFING • TILING • LANDSCAPING
FASCIAS • GUTTERING • STONE WORK

For all types of building work call your local
family builder for advice and free estimate

01886 812 450

07905 396 971



STOURPORT WHOLESALE CARPETS

SUPPLIERS OF DOMESTIC & CONTRACT FLOORING

CARPET AT WHOLESALE PRICES

LUXURY FLOORING FOR ALL AREAS
CARPETS SUPPLIED AND FITTED FROM TOP MANUFACTURERS
FITTING BY OUR OWN EXPERIENCED FITTERS
BANKRUPT STOCK AVAILABLE
COMPETITIVE PRICING WITH A PERSONAL TOUCH
SPECIALISTS IN STAIR RUNNERS AND RODS
FAST AND FRIENDLY SERVICE
FOR A FREE ESTIMATE WITHOUT OBLIGATION
PENSAX 01299 666400

PHIL GRAY

Dairyman / Newsagent

*National...Daily...Sunday & Local Papers
...Magazines...All Milk...
...Dairy Products...Eggs...Soft Drinks
...& Waters etc.*

Let your Milkman do the Walking
Phone & Fax: 01584 881385

Blacksmith of Worcester

Distinctive Wrought Ironworks

Bespoke garden furniture, gates, railings,
firegrates/guards, curtain rails & gifts.

Architectural steelwork and restoration.

www.blacksmithofworcester.co.uk Tel: 07969 071847

QUIZ NIGHT FOR CLIFTON SCHOOL FRIENDS

The Friends of Clifton Primary School are hosting a Quiz Night on Friday, 30th November, in Clifton village hall.

Teams of up to six contestants are invited to enter for the event, which will start at 7pm. Entry is £10 per person which includes a two course meal, but there is a £100 prize for the winning team.

To book a team table or for more information, contact Charlie Merrick on 07496 394 731 or email cutpta@gmail.com.

MAMA MIA! HERE WE GO AGAIN

Clifton Village Hall

Saturday 8th December, 6.30pm for 7pm

Adults £5, Under 16's £2.50

Fancy dress optional

**We will be collecting clothes for Maggs Day Centre
and goods for the Worcester Foodbank**

BIG CAROL SING AT ST KENELM'S CHURCH

Following the success of last year's 'Big Carol Sing' at St Kenelm's church, there will be another one this year on Saturday, December 1st.

"Our 'Big Carol Sing' was such a resounding success last year, as were the wonderfully decorated Christmas Trees from the various groups in the village," said Barbara Seeley. "If your group would like to be involved this year could you please let the contacts below know. We will be in touch with those groups who took part last year, hoping you will want to be involved this time around."

Contacts: Barbara Seeley 01886 812 763
barbarachristineseeley@yahoo.co.uk
and Nigel Roberts 01886 812 598
robertslake@aol.com

SHELSELY HARVEST SERVICE AND SUPPER

The service, officiated by Des Robson and Curate Becky Elliott, was well attended this year at All Saints. Churchwarden Jane Froggatt, along with all other attendees would like to express their thanks to all the ladies that decorated the Church so beautifully with the Harvest displays. (See photos on the inside back cover.)

Also thank you to those who contributed to the Church collection, which was raising funds for the provision of fresh water in third world countries and for the produce donations, which will be split between the Maggs Day Centre and the Worcester Foodbank.

Following the service, we all then proceeded to the village hall, where a delicious harvest supper awaited. Again, huge thanks to the very talented group of ladies who cooked a wonderful, filling supper for us all, along with an incredible choice of puddings to die for!

The finishing touch to the evening was the raffle draw. The star prize was a beautifully hand crafted walking stick, both made and generously donated by Brian Hodgetts. The lucky winner was Rosemary Holloway (see photo on inside front cover). The sum raised for the Church from this was a wonderful £339 – thank you so much for such a wonderful idea Brian.

The whole Harvest celebration was a very enjoyable, sociable affair and it was heart-warming to see so many local people attend. Thank you to everyone.

CLIFTON LOT

The 'Clifton Lot' National Lottery syndicate was launched on Saturday 13th October with 22 members taking part. Each member pays £2 per week resulting in 11 entries in both the Saturday and Wednesday Lotto draws.

The syndicate cannot be regarded as any kind of investment. It's simply a game which provides a little excitement each Saturday and Wednesday evening and also contributes to the National Lottery's charity work.

The first entry resulted in a modest success in gaining a £25 prize. On the other hand – as they say, 'You have to be in it to win it'.

Entries are made in five-week rounds and new members are already applying for the next round, which begins on Saturday, 17th November.

If you would like to join, contact John Wain on 'NEXTDOOR' or ring 01886 812 958.

Silver Dollar Honkytonk

**WELCOME – PLEASE COME AND JOIN US
at the Silver Dollar Honkytonk!**

A new, regular, "pop-up" country music roadhouse offering the best night out
this side of Nashville, Tennessee... right here in the English Midlands!

Here at the Honkytonk we believe in:

- § The ~~best~~ live country music from the ~~best~~ great hands
- § Authentic soul food three-course dinners giving you the energy to dance all night
- § A fully-stocked cash bar to make your evening go with a swing

Saturday 10 November 2018
7.30pm (111 late)

Presenting...

The East Lonesome Drifters



www.eastlonesomedrifters.com
www.facebook.com/eastlonesomedrifters/

"A London-based honkytonk bar-room band, East Lonesome Drifters
play classic country, western swing, Bakersfield sound, bluegrass and Americana."

Crispy Cowboy and the band are looking forward to entertaining us...

We are delighted to have persuaded them to visit us here in the Midlands
for our first Silver Dollar Honkytonk night!

Tickets £15 in advance
All further details from www.mesilverdollarhonkytonk.co.uk

 © 2018 Sappy Village Hall, High House Crowlands 48-4281/26284
Sappy Supper, Worcester WR6 6EU Free purchase of the venue 

Shelsley Beauchamp Village Hall Coffee Morning

Everyone Welcome



10a.m
to 12noon

Saturday

3rd November, 2018

Come along for coffee and cake and
chat with your neighbours

CLIFTON SCOUTS OPEN EVENT

Do you have children aged 8 to 14 needing adventure, challenge and wanting to learn new things? If so, a Scout Group is being formed again in Clifton for Beavers (6 - 8 years), Cubs (8 - 10.5 years) and Scouts (10.5 - 14 years).

All potential Scouters are invited to an Open Event at the Clifton BP Hut in Pound Lane on Tuesday 13th November, between 6pm and 7pm. All ages are welcome to come along and join in the activities and find out more about scouting.

For further information, email cc@hwscouts.org.uk or phone 07828 927 111.

The Battlefields of Life

A series of inspirational talks Autumn 2018



Supper & Guest Speaker

Shelsley Village Hall
7.00pm
TICKETS £5 from
Des & Beryl Robson
t. 01836 812535
e. beryl.blackburn@yahoo.com



Tuesday 6th November
Paul Swann
'The Power of Vulnerability'



Tuesday 4th December
Brigadier Ian Dobbie OBE
'Active Service with Christ'



Tuesday 20th November
Christian Motorcycle Association
'Riding for The Son'

Hosted by
Churches Together in the Teme Valley
Due to licensing laws please bring your own wine

CLIFTON UPON TEME BOWLING CLUB

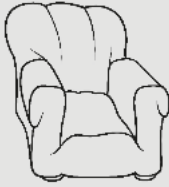


Coffee Morning and Garage / Attic Sale
 Saturday 10th November
 10am – 12 noon

Clifton Village Hall, Hope Lane
 Cake stall and raffle
 Entrance including coffee £2.00

STANFORD HISTORY GROUP - Upcoming Talks

	World History The Silk Roads, Ireland & Slavery	
Stanford History Group		
Stanford Village Hall, Stanford Bridge, Worcs. WR6 6ST		Monday evenings at 7.30p.m.
1st October	China's Cosmopolitan Capital: Chang-an, the Silk Routes and the Tang Dynasty Jonathan Dugdale	University of Birmingham
8th October	Silk Road: Orientalist fiction or reality? *****	Dr Aresou Azad University of Birmingham
15th October	The Glorious Revolution of 1688 and the Birth of the British State.	Dr Paddy McNally University of Worcester
22nd October	Ireland, 1685-1800: from <i>Anclen Régime</i> to Nation.	Dr Paddy McNally
29th October	Ireland under the Union, 1801-1922	Dr Neil Fleming University of Worcester
5th November	The two Irelands, 1922-present *****	Dr Neil Fleming
12th November	Is the "Nation-State" an impossible dream?	Pauline Annis Open University
19th November	Slavery: The British Atlantic Slave Trade- A personal account	Prof. Suzanne Schwarz University of Worcester
26th November	Slavery, the French Revolution and the founding of modern Haiti	Dr Noelle Plack Newman University
3rd December	Slavery, emancipation, and the American Civil War	Dr Dan Whittingham University of Birmingham
10th December	End of Term party: Discussion Evening	
COSTS:	The full course £65 or £10 for an individual lecture payable on the door	
CONTACTS:	Simon Marriott 01886 853 412 simon@adamswoodfarm.co.uk	
	Karon Jamous 01886 853674 karonjamous@aol.com	
	Margaret Prandle 01299 896715 mjprandle@outlook.com	
	Rosemary Smart 01905 621 895 ra.smart@kirk12.plus.com	
	Johnny Crabbe 01299 833936 johnny.crabbe@sky.com	
	Alan Stuttard 01886 853465 ajstuttard@gmail.com	



HUNTLANDS FARM BED & BREAKFAST AND UPHOLSTERY

www.huntlandsfarm.co.uk

Tel: 01886 821955 / 07828 286360

OFFERS:

upholstery classes • upholstery commissions
en suite b&cb accommodation • wedding venue
all in an idyllic, rural setting on a working farm.
And a self-catering, 6 bedroom farmhouse on an
adjacent farm, www.moorhallfarm.co.uk

*Your hosts, Lucy, a custom upholsterer and
Stephen, a passionate cook, guarantee you a comfy
stay with freshly prepared, local food to enjoy.*

MARTLEY OSTEOPATHIC CLINIC

Osteopathic treatment
for infants to adults
including cranial techniques

01886 889 002

Mark Roughley

GOsC

Registered Osteopath

Maylite Business Centre
Maylite Trading Estate
Martley, WR6 6PQ



ANDREW JELLEY OPTICIANS

18 Teme Street Tenbury Wells

01584 811445



www.andrewjelleyopticians.co.uk



NORA PARSONS CENTRE

Venn Lane, Wichenford, WR6 6XY

Open Mondays and Thursdays 9.30am - 3pm for
good company, refreshments, including a hot lunch,
board games, and exercises.

Also on offer a visiting hairdresser, and a podiatrist,
If transport is a problem we can collect you and take
you home at the end of the day.

Phone 01886 888374

Charity number: 1056248



Monday-Friday

9am-3.15pm

Ages 2-5



Forest School Sessions

Full & Half Days Available

Indoor & Outdoor Facilities Available

ALSO!

Breakfast Club 8am-9am

After School Club 3.15pm-6pm

Ages 2-13



Graduate Leader

Martley CoE Primary School

Martley Worcester WR6 6TJ

01886 889127

www.martleypreschool.co.uk



Ombersley Family Dental Practice

MRS ANDY WRIGHT B.D.S. (EDIN)

A friendly private practice specializing in preventive dental care for all the family in a happy relaxed atmosphere.



New patients welcome

Cosmetic treatments including tooth whitening

Sports gum-shields for all ages in various colours and designs

Same day emergency appointments

Large car park

Tel: 01905 621881

**RACKS LANE, OMBERSLEY,
NR DROITWICH, WORCS. WR9 0EN**

www.ombersleyfamilydental.co.uk



K.B. CATERING

**TAILOR MADE QUALITY MENUS
FOR ALL YOUR CATERING NEEDS
KIT BAMFORD**

Based at The Birche, Shelsley Beauchamp, a special venue with unique ambience for wedding ceremonies and other celebrations, as well as other outside catering requirements, please call me on:

01886 812251 or 07801 699597 or 01905 345200

Email: kitbamford@live.co.uk

**SERVICED OFFICES AND WORKSHOPS
AVAILABLE ON FLEXIBLE
MONTHLY TERMS
ALSO SMALL INDUSTRIAL UNITS**

www.maylite.co.uk

Please contact Kate Shrubbs on
01886 888455 for more details

MAYLITE Business Centre

Maylite Trading Estate, Martley WR6 6PQ

Tipton Hall Riding School

Riding lessons-for all ages and abilities.

Hacking-through wonderful countryside.

Horse Livery-small friendly yard.



Roger Benbow
BHS(A) Reg. Instructor

Phone: 01885 488791
mobile: 07792 358741
www.tiptonhallridingschool.com

Clifton-upon-Teme

Early Years Centre



Offering quality childcare
and
pre-school education
For 0-5 year olds

Open 7.30am - 6.00pm
Experienced qualified staff
Flexible hours
Ofsted Registered
Nursery Education Grants available

Also offering job opportunities for
professional, committed staff
looking for support in their
career development.

For further details,
please telephone the Manager
at the Centre 01886 812380
The Village, Clifton-upon-Teme,
Worcester WR6 6DE.

HAINES HEATING & PLUMBING

**A Friendly local service
Call: 07534 700 932**

All aspects covered from dripping taps
to full heating install:

Office: 01886 812639
Email: alex@haines4heating.co.uk
20 Saxon Close, Clifton upon Teme, WR6 6DL
www.ahainesheating.co.uk



SERVICING & REPAIR ALL TYPES OF GARDEN MACHINERY



BRIAN BUTLER

Clifton-on-Teme
07929 014804 Daytime
01886 812538 Evening

COLLECTION and DELIVERY

NICK CHAMPION

PROPERTY | AUCTIONS | AGRICULTURE | PROFESSIONAL

**YOUR LOCAL PROFESSIONAL,
INDEPENDENT RESIDENTIAL &
RURAL PROPERTY SPECIALIST.**

- SALES
- AUCTIONS
- LETTINGS
- ACQUISITIONS



NICK CHAMPION LTD

16 Teme Street, Tenbury Wells, Worcestershire, WR15 8BA
Tel: 01584 810555 Email: info@nickchampion.co.uk
www.nickchampion.co.uk

PC Troubles?

- PC problems solved
- Broadband connection set-up
- Home network set-up
- Printer and camera problems solved
- Website design service
- Basic PC training at home



*For friendly and local advice and to
book a free consultation contact*

Bernadette Higgins on 07813 302 504
or e-mail: apctrouble@gmail.com

LUXURY CATTERY

Call Lesley on 01886 821154

- New luxury Cattery set in beautiful open countryside. Run by genuine cat lover.
- Fully Licensed and Insured.
- All chalets have heated bedrooms and spacious play runs.
- Special needs and diets catered for.



Kitty's Cattery

Coronation Cottage, Broadwas (Nr. Martley), Worcester, WR6 5NT
www.kittycattery.co.uk kittycattery@hotmail.co.uk

TAYLORS

**CONSERVATORY
CARE**

22 Saxon Close
Clifton upon Teme
Worcester WR6 6DL



Mobile: 07801 281821
Tel: 01886 812424
Fax: 01886 812954

Sales • Service • Repair

SUPPLY • INSTALLATION • AFTER SALES CARE • RE-ROOFING

We supply and fit:

Aluminium Windows and Doors • uPVC Windows and Doors
Hardwood and Softwood Windows and Doors
Conservatories in Hardwood / uPVC / Aluminium

PILKINGTON APPROVED INSTALLERS

Agents for Compton Garages & Alton Greenhouses

Please phone for Free Quotation • Fence Registration No. 18796



RED KITE Pest Control



&
Wildlife Management

Combining Tradition and Innovation

For all your local Pest Control requirements
Flexible Contracts ~ Individual Treatments
BPCA and NPTA Qualified

All **INSECT** Pests
All **RODENT** Pests
All **WILDLIFE** Pests

Specialized Trapping service
Pest Prevention and Proofing
Cleansing, Decontamination, Disinfection

Free Advice
Free no obligation Quotations

Telephone **Andy Staples on:**
07977 044987 / 01886 832730

TVA

TEME VALLEY ACCOUNTS

Bookkeeping VAT
PAYE Sage Accounting
Tax Returns Draft Accounts

Contact: Claire on
Tel: 01584 881708 or 07731 010099
Email: Claire.tva-accounts@outlook.com

Party / Business / Reception / Function

CLIFTON VILLAGE HALL

Three meeting rooms (2 – 120 people)
Modern, well equipped kitchen
with crockery, glasses etc.
Good parking in central location

**Bookings: 01886-812464 / 812238/
812969 / 812335 or
hallshire.com**



Home Tutoring

KS2 **English** and **Maths**
English Literature and **Language**
to A Level

Beginner's **French** and **Italian**
Latin and **Classical Greek** to GCSE
Beginner's piano lessons

Paul Tiffany MA, PGCE
Catherine Owen MA, PGCE

Both CRB checked
01886 812420
pltiffany@aol.com



Self Storage Units

20ft Shipping Containers
at Stanford Bridge

Under cover
Security lighting

Please contact Alex
on 07973 624318
or 07966 865015



S H E L S L E Y

VILLAGE HALL
FOR HIRE

Set in beautiful surroundings
(with french windows leading onto terrace)

Close to the river and hillclimb

Well equipped kitchen • Bar available
Ideal for meetings, dances, parties etc.

VERY REASONABLE RATES

Contact for bookings

Dave Bates 01886 812551
www.shelsleys-vh.uk



~ Bespoke and Ready-Made Picture Frames ~

Unit 1 Maylite Trading Estate, Martley, WR6 6PQ
Store open Mon-Fri 8:30am-5pm
Phone: 01886 888766

We frame anything...
~ pictures ~ 3D objects ~ certificates ~ t-shirts ~
~ needlework ~ medals ~ memorabilia ~
and more!

~ www.Framing-Marvellous.co.uk ~

TEME INDUSTRIES

MOTO-X BIKES, ACCESSORIES & CLOTHING
BMX • SCOOTER • SKATE
FISHING TACKLE & BAIT

Visit us instore:

Mon-Fri 9am-5pm | Sat 8:30-11am
Unit 1 Maylite Trading Estate, Martley, WR6 6PQ

Bike services and repairs undertaken - BMX, Cycle and Moto-X

www.teme-industries.com

Paul the Painter

Professional painter & decorator
in Clifton-upon-Teme

Interior & exterior, from a single room to a whole house

Tel 01886 812168 / 07759 298754
E-mail paulthepainter23@msn.com



Physiotherapy for both women and men's health, looking holistically at the individual, advising on key health messages to help improve lifestyle and well being.

fionacarterphysio.co.uk
Mobile 07712 032998
Email fi.carter.pyf@gmail.com

Are Your Locks Behaving Badly

Check A Lock Fix A Lock

- No Call Out Charge •
- Free Onsite Estimates •

All Types of Door & Window Locks
Opened • Repaired • Serviced
Jammed Doors • Faulty Locks
Lost • Broken or Poorly Cut Keys
Wooden-UPVC Door & Window
Multi-Point Lock Repair Specialist
Doors Adjusted & Realigned
No Job Too Big or Small
For More Advise Call Stewart

THE LOCKSMITH

01905 570 999 07871 44 20 11
Local Reliable Independent Locksmith

www.locksmithworcestershireshire.co.uk



Contact: Juliet Twinberrow
Tel: 01886 821408 Mob: 07772 799754
Email: info@housevet.co.uk
www.housevet.co.uk

Lizzie's
Chauffeur Services



Liz Whittaker - lady chauffeur
Affordable Comfort Travel in Style
Transport solutions for up to eight passengers.
All air and seaport. Wedding and sporting events.
Local and National journeys. **07814 006179**



**For an Affordable
& Reliable Electrician
Choose REWIRED!**

 The Power Behind
Teme Valley....

01886 853 011
07421 748 288

www.rewired-worcester.co.uk



FUTURE EVENTS:

Friday 5th October The Ukapellas
Saturday 6th October Pub night
Friday 2nd November Dan Greenaway
Saturday 3rd November Pub night
Friday 9th Tenbury YFC Bonfire night (TBC)
Friday 7th December Big Sister
Saturday 8th December pub night

Opening times:

Fridays 5pm till midnight,
Saturdays 12noon till midnight
Sundays 12noon til 8pm

Only Open the first weekend of the month

the **snug** & **purethyme**
holistic therapies

beauty & therapies

07989 529215 • 07964 176747

Minutes of the Annual Council and Ordinary Meetings of Clifton upon Teme Parish Council

Both the meetings were held on 6th September 2018 for inclusion in Teme Triangle Excerpts from the Minutes provided by Clifton upon Teme Parish Council.

The complete version of the approved minutes can be found on the Parish Council website: <http://clifton-upon-teme-pc.org.uk/> . If you would prefer the PC to email a copy of the unabridged minutes to you each month please let one of the Parish Councillors or Clerk have your details and email address.

Attendance

Present: M Newman (Chairman); W Bradley; R Henry; N Parkinson; B Yarnold

Apologies: District Councillor C Palethorpe; County Councillor K Pollock

In Attendance: R. Wilks (Lengthsman); J Hill (Clerk)

Minutes of Previous Meetings of the Council

Minutes of the Ordinary Meeting of Clifton upon Teme Parish Council held on 26th July 2018 were approved (RH/WB) and signed by the Chairman as a correct record.

Planning

Application: 18/01084/HP

Location: 5 Forge Meadows, Clifton Upon Teme, Worcester, WR6 6TZ

Proposal: Two storey rear extension and alterations to dwelling .

Applicant: Mr & Mrs Gibbs

Members resolved (BY/MN) to support the application.

Members noted and thanked RH for his report re S106, which included draft Terms of Reference for a possible project group and a draft Explanatory Sheet re S106. Members resolved to:

Approve the Explanatory Sheet (BY/MN)

Approve the Terms of Reference (MN/BY)

Defer until the October meeting any decision about the date of a first meeting and how to publicise the meeting (MN/BY).

New Highways and Byways: contact WCC: sign outside school damaged and leaning sideways: sunken area of highway where pipe work had been laid by Lovell's contractors at Pound Lane.

Finance

- Payments to be made in respect of outstanding invoices and requests for payment totalling £762.73 were approved (WB/RH)

- Members resolved (MN/BY) to accept SSE contract for supply of electricity to the Pavilion.

Property related matters

- Members noted that the quotations for repair of damage to the Sports Pavilion were awaiting the outcome of deliberations between the broker and the insurer

- Members accepted with gratitude Clifton Rovers Football Club's offer to donate their two newly erected metal goalposts to the Parish Council for wider community use. The goalposts to be added to the PC asset list and the insurance schedule (MN/WB). Clerk to write and thank Clifton Rovers FC.

Parish Council Assets

- In view of the confidential nature of the business about to be transacted, Members resolved (MN/WB) that the public and press be excluded pursuant to the Public Bodies (Admission to Meetings) Act 1960. The reason being brief update on matters linked to parish council assets.

- Members noted advice received from the Parish Council's professional advisor.

RECOVERED



WITH SUPPORTING ACT

Cam & Jake

CHARITY FUNDRAISER

AT

CLIFTON UPON TEME VILLAGE HALL

ON

Saturday 17TH NOVEMBER

We are delighted to announce that for the second year running, we will be performing a charity gig at Clifton Upon Teme Village Hall, this time with support act *Cam & Jake*.

All monies raised will be donated to ROBOCAP, a charity supporting early, accurate prostate cancer diagnosis and treatment.

Phil Hudson from the charity will be attending and providing more details of the excellent work they do.

There will be a small admission charge of £6.00 per person which will get you a tasty portion of Pie & Peas along with a fantastic night of music. A bar will be available serving a range of beers, wines and soft drinks.

Doors open at 6.00PM.

Come along, bring your friends, tell them to bring their friends too.

'VOCAL SCORE' IN CONCERT AT CLIFTON

Come and enjoy the wonderful singing as Vocal Score delve into their amazing range of songs in a return visit to Clifton village hall on Saturday, 24th November at 7.30pm.

The evening is part of the fund raising in aid of St Bartholomew's Church in Harpley, which needs a replacement heating system (preferably before the winter) and is also in the process of installing a water supply to enable it to have a kitchen area and other facilities.

A mouth-watering range of puddings will be available from the fabulous cooks of Lower Sapey for the amazing price of only £5. Tickets from Dot Millward 01886 853 662 or Marion West 01886 853 249. Tea and coffee will be available but if you would like something stronger please feel free to bring it along.

LOWER SAPEY NEWS with Margaret Griffiths

As I write this, we are nearing November and it's gloom. The wonderful summer is long gone and I dread a repeat of last winter and it's snow drifts, which are apparently already predicted. Let's not get too dispirited though, as we have a lot to look forward to: Bonfire parties, a concert and pudding evening and then, of course, Christmas!

In the meantime it is time to check gas and oil tanks, chimneys, boilers and wood stocks. The gardens need attention but it is amazing the way they have recovered so well from the drought. Our own crop of apples, plums and particularly, figs, has been very rewarding this year. Ah well, Spring and the cricket season, is only 5 months away!

We have a bonfire party near St Bartholomew's Church on November 9th at 6pm. This is partly to thank Bob Whitefoot for his help in clearing the overgrown trees

and of course partly to get rid of the wood. As a result of his efforts, the Churchyard is now full of light. We also have a pudding evening with a concert by the popular choir 'Vocal Score' on November 24th. This is at 7.30pm in Clifton village hall and tickets are available from Dot Millward at £5 pp. We hope we can have a good response to this as it is in aid of the new heating system for our Church. I am glad to report that work is in progress towards this and to the addition of a fresh water supply. We await faculties from the Diocese!

Of course it is the centenary of the ending of the Great War on November 11th this year. It is difficult to imagine what this must have meant to everyone after four terrible years. My great uncle Bob was killed in the last weeks, but my paternal grandfather died just before, of the Spanish flu that swept the world. This actually killed more people than the war. It is estimated that 15-20 millions were casualties as a result of the conflict, but that 50-100 million died world wide as a result of the Spanish Flu. Our own Remembrance Service will be at 10.45 on November 11th.

Don't forget your flu jab!

CHRISTMAS FAYRE
Nora Parsons Centre, Venn Lane, Wichenford

RAFFLE
HOMEMADE CAKES
TOMBOLA
BRIC-A-BRAC
SATURDAY
24TH NOV
2018
2PM - 4.30PM

Nora Parsons Centre is a registered Charity: 513990

NOTICES

- Bonfire and Barbecue on November 9th at 6pm at St Bartholomew's Church.
- Concert and Pudding evening on November 24th at 7.30 in Clifton Village Hall. (Tickets from Dot. £5pp).
- The Ladies Bible Group will be held at the home of Margaret Griffiths on Tuesday November 13th at 2pm .Thanks to Pat for holding the October meeting while I was unwell.
- Housekeeping at the Church during November is in the hands of Jane Dallow.
- The Mobile Library will call on Friday November 16th at 10.20 and 10.40am.

Services at St Bartholomew's in November:

- 4th November Morning Prayer at 10.30 with Pat Snelling.
- 11th November Methodist Remembrance Service at 10.30 with Becky and Rev. Lewis.
- 18th November Holy Communion at 10.30 with Rev. Sherwin.
- 25th November Circle service at 10.30 with Jen.

PROTECT YOUR FARM
PROTECT YOURSELF

FREE
PROPERTY MARKING
AVAILABLE ON ALL FARM EQUIPMENT

FREE
REFRESHMENTS

EVENT
SAVE THE DATE
Thursday 22 November, 4-7pm
Three Counties Showground WR13 6NW

All members of the **farming community** are invited to a free marketplace event, where you will have the opportunity to ask any questions and receive advice from key organisations on a number of farming issues, including:

- Rural crime and property protection
- Well-being and farm safety
- Economy and finance

Ask the experts
Q & A session with a selected panel hosted by former BBC H&W presenter, **Mike George** –
5:15-5:45pm

For more information
Visit www.malvern hills.gov.uk/protect-your-farm
Phone: 01684 862417 Email: communityservices@malvern hills.gov.uk

WYCHAVON DISTRICT COUNCIL
good services. good value

CSP
Rural South Worcestershire

Malvern Hills District Council

J & S Trade Supplies



**TRADE
SUPPLIES**

Haven Nurseries
Bank Road
Little Witley
Nr Worcester
WR6 6LR

Tel: 07966-804007
Tel/Fax: 01886-888024
VAT No: 824 6536 21

Partners: JT Bull & SR Bull

Suppliers and Installers of:

Aluminium Windows
Aluminium Bi-Folding Doors
Hardwood and Softwood Bespoke Timber Windows,
Doors and Conservatories including
Grade I and Grade II listed
Secondary Glazing and Replacement Sealed Glass Units
UPVC Windows, Doors and Conservatories
Garage Doors, Fascia and Soffits
We now also specialise in small building projects including
carpentry and joinery

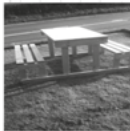
**PLEASE CALL FOR A FREE NO
OBLIGATION QUOTATION**

BILLS GARDEN GATES AND TIMBER PRODUCTS

- Garden Furniture
- Log Stores
- Chicken Runs
- Aviaries



- Storage
- Decking
- Fences
- Your Choice



...and more made to order locally from FSC treated or untreated timber. Bespoke and renovations also undertaken

For more information contact Bill

- Tel: 07580 274999
- Great Witley 01299 896681
- Website: www.billsgardengates.co.uk
- Email: billsgardengates@btinternet.com



www.facebook.com/billsgardengates

COLIN GRIFFITHS

GROUNDWORKS CONTRACTOR

MARTLEY, WORCESTERSHIRE

"A Business
built on
a solid
foundation"

Main Sewer Connections
Septic Tanks

Foundations to D.P.C.
Concrete & Tarmacing
Site Clearance

Foul & Storm Drainage etc.

For all your
private &
industrial
groundworks

For a personal and efficient service
please contact Colin on,

TEL. 01886 821283 MOB. 07836 772501

Providing High Quality
HomeCare

Eclipse HomeCare
making a difference

**Excellent
Care from
Local
People**



- We have a full range of hourly, daily & live in services
- Specialists in Dementia, MS & Alzheimer's care
- Longstanding teams of dedicated local caregivers
- Excellent reputation with Private Clients, Worcester County Council and CQC (Care Quality Commission)

Eclipse Homecare has been operating in this area for almost 10 years and is an Award winning local business. Speak to us today to find out more about how we can help.

www.eclipsehomecare.co.uk

Worcester 01905 641 070	Malvern 01684 869 432	Kidderminster 01562 535 420	Bromsgrove 01527 573 949	Teme Valley 01584 812 594
-------------------------------	-----------------------------	-----------------------------------	--------------------------------	---------------------------------

LEE JAMES CARPENTRY & JOINERY

Qualified and experienced in all aspects of carpentry

- Kitchens supplied and fitted
- Roofing
- 1st and 2nd Fix
- Renovations – old & new
- Oak timber frames
- Plastic fascia & soffits
- Loft conversions
- Doors & windows

Quality and Satisfaction Guaranteed

For free quotes, competitive prices and a professional service phone:

**(01886) 821151
07779 073870**

Chimney Sweep

Andy Johnson

- Certificate issued
- Weekend/Evening sweeps available
- Traditional brush/Power sweep



01886 821933 / 07798 790913



REGISTERED MEMBER
www.instituteofchimneysweeps.co.uk



LOCAL PILATES CLASSES EVERY DAY

including a new ante natal class at
Wichenford on Monday evenings

Please contact **Sue Bratton** for more details or to book a place **07974 343609** or sue579@icloud.com



Naturally beautiful & fragrant
British flowers for all occasions
kate@camomilecornflowers.co.uk
01886 812184 07887 706147

adrianmackwell

AUCTIONEER & VALUER

m 07554 004028 t 01886 812575 e amackwell@gmail.com

Custard Cottage, Clifton on Teme, Worcestershire, WR6 6EW

Specialist valuations of Antiques,
Fine Art and House contents for:

Probate/Inheritance tax,
Sale by Auction, Marital Separation
Sales by auction arranged
House clearance service available

www.adrianmackwell.com

PROBATE/INHERITANCE TAX

"Sympathetic and straightforward"

CLEARANCE

"Thorough and efficient"

AUCTION

"Honest and approachable"

INSURANCE

"Clarity and discretion"

www.adrianmackwell.com



- Bookkeeping Services
- Personal Tax Returns
- VAT Returns
- Payroll
- Management Accounts
- Year End Accounts
- Corporation Tax Returns
- Budgeting & Forecasting

Rachel Perks

ACMA CGMA FIAB

Tel: 07484 161382

rachel@perksaccountancy.co.uk

www.perksaccountancy.co.uk

Laugherne Farm House, Martley
Worcestershire, WR6 6QB

Church Matters

by Jack Whittenbury

Poppy Time

Churches and village squares throughout the land will join those at the Cenotaph in London on 11th November in a combined act of remembrance of those whose lives were cut short in recent wars. We wear the red poppy as a collective sign of respect and this simple flower has come to mean so much, not only to those who mourn, but also to those who seek to prevent further wars. It's not a fashionable adornment, but a distinctive accessory, which sends a message of national togetherness.

The poppy grows in persistent abundance in northern France, even on a war-torn landscape, and was chosen as a symbol of Remembrance following the publication of a poem by a man named John McCrae.

“ In Flanders fields the poppies blow between the crosses, row on row...”

Colonel John McCrae was born in Guelph, Canada and was a talented poet, author and, most importantly, a surgeon on the Western Front in World War 1. He did not see the end of that dreadful war; he died at Boulogne-sur-Seine in January, 1918. His stirring work caught the attention of an American professor, Moina Belle Michael, who worked for the Young Women's Christian Association. These words, particularly in the last verse, combined with her Christianity, moved her to do something to keep faith with the fallen.

“To you from falling hands we throw the Torch; be yours to hold it high.

If ye break faith with us who die, we shall not sleep, though poppies grow in Flanders Fields.”

After reading and being moved by the poem, professor Michael bought all the artificial poppies she could find in Wanamaker's department store in New York and began to sell them as symbols for remembrance on the anniversary of the end of the War. The American Legion adopted the poppy in 1920 and the newly formed British Legion followed in 1921. The idea of a Remembrance poppy, sold as a way of generating funds for veterans quickly caught on.

The strength of feeling and association with those who served and those who serve today has not diminished over the century and the work of the now *Royal* British Legion continues. The needs of service personnel and their families have not diminished either, and the Legion cares for service families to the tune of over £1.6m per week throughout the year.

So many broken lives, broken in our name!

Throughout the birth of the Poppy Appeal, the faith of those who guided it was very evident and it is perhaps fitting that the majority of Remembrance Day services these days are held in places of communal worship.

TEME VALLEY WILDLIFE

Back in September I mentioned some slug and snail control methods in an article about slug pellets and hedgehogs. Imagine my dismay when I opened the paper today, to see a headline announcing "Gardeners are losing war on slugs". The Royal Horticultural Society has released the results of a study that found that many commonly used remedies (yes, including those that I had recommended) make no difference whatsoever in protecting lettuces against slugs. In the interests of clarity and accuracy I therefore withdraw my previous advice!

Five remedies that the researchers tested, and found wanting, were copper tape, horticultural grit, pine bark mulch, wool pellets and eggshells. Their test methods were painstaking. They grew 108 lettuces for 6 weeks, then harvested them and measured the slug damage. The only good news about this study is that the RHS has got as many slugs as I have! They concluded that removing slugs by hand and setting traps to facilitate this, were effective, as were the use of nematodes and slug pellets (which they applied within strict wildlife-damage-limiting guidelines). They also suggested encouraging birds into the garden to help with the physical removal side of things, although they did not test any bird-friendly measures in a scientific way.

After the September article came out I had an interesting chat with a local farmer who told me about a project that has been running in the valley over the last few years. Severn Trent Water regularly measures pollutant levels in the River Teme and has introduced a scheme whereby farmers can be paid a small fee to switch from metaldehyde to ferrous oxide for slug control on their crops. Ferrous oxide is safer for the environment, but still toxic to slugs, and can be used at lower densities of pellets than metaldehyde, although it is more expensive. I was delighted to find that Teme Valley farmers are ahead of the curve and leading the way for gardeners and wildlife enthusiasts. Coincidentally, our local farmer has recently spotted a hedgehog hiding up in his out-buildings and is currently treating it to cat-food, what more can I say!

I had intended to write about hedgerows this month, not hedgehogs, but they will have to wait for another time. Until then, cheerio, and remember to check your bonfire on the 5th for any spiny creatures who might be having a quiet sleep underneath.

The next meeting of the Teme Valley Wildlife Group is on Thursday November 8th 2018. We welcome Peter Garner, whose talk is entitled "The Flora of Herefordshire". The meeting is at 7:30pm and the venue is Stoke Bliss and Kyre village hall, WR15 8RR. It is just £2 on the door and everybody is most welcome.

For up-to-date information on what wildlife is being seen in the area, or to give us your sightings or comments, visit our Facebook page. Our programme of events, bird survey and archive photographs are available on our website www.temevalleywildlife.co.uk

The group normally holds meetings on the second Thursday of the month. All are welcome. Contact us by telephone on 01584 881 397 or by email at zeunie@hotmail.com.

APPEAL FOR NEW TRUSTEES PLEASE

Hello! We are the Clifton-upon-Teme Early Years Nursery. We are appealing for new Trustees to join our committee and help with the ongoing strategic management of the nursery. The Nursery offers an invaluable service to the local community providing care for babies from 3 months of age to pre-school, as well as wrap-around service for the local Primary School. We are a strong and active committee and would relish some fresh faces and input. If interested, please get in touch with Serena Spring for more information, serenaspring@gmail.com.



AND FINALLY

A reminder again that Teme Triangle has a Facebook page – so you can keep abreast of all the latest news on our site: www.facebook.com/TemeTriangle.

Also, our printed magazine will continue to be available in all local shops and community spaces so you can choose how and when to keep up to date.

Keep sending your articles and photos in....we love to hear and share your news.



During Advent, many homes have an Advent Calendar, each day a window is opened and reveals a treat inside. This year try something different!

We are asking everyone to engage in our

**'REVERSE ADVENT EVENT'
(Advent begins 2nd December, 2018)**

Take a cardboard box, wrap it in pretty paper, or let the children decorate it.

Each day of Advent place an item of non-perishable food (tins of tomatoes, mixed veg.,salmon, tuna etc., packets of rice, pasta, soups, sauces etc.,) or a treat into the box.

On December 24th between 12noon and 3.30p.m, bring your REVERSE ADVENT BOX to All Saints Church, Shelsley Beauchamp. WR6 6RA You can enjoy a glass of Mulled Wine and mince pie, bring the children to see the Nativity Stable outside the church.

Followed by CAROL & CRIB SERVICE in the church at 4p.m.

The boxes will be taken to the Worcester Food Bank for distribution to families in need. This will be a lovely start for 2019 for families in Worcester who are struggling to feed their families.

Thank You (Churches Together in the Teme Valley)

CALENDAR

November

- 1 Big Carol Sing, St. Kenelm's.
- 3 Coffee morning, Shelsley VH, 10am – 12 noon
- 5 Stanford History Group talk,
'The 2 Ireland's, 1922-present', Stanford VH, 7.30pm
- 8 Teme Valley Wildlife Group talk, Stoke Bliss & Kyre VH, 7.30pm
- 9 Bonfire and barbecue, St. Bartholomew's, 6pm
- 10 Clifton Bowling Club coffee morning and garage / attic sale,
Clifton VH, 10am – 12 noon
- 10 Silver Dollar Honkytonk, Sapey VH, 7.30pm
- 12 Stanford History Group talk,
'Is the "Nation-State" and impossible dream?',
Stanford VH, 7.30pm
- 13 Clifton Scouts Open Event, Clifton BP Hut, 6-7pm
- 13 Clifton WI Annual meeting, Clifton VH, 7.30pm
- 19 Stanford History Group talk,
'The British Atlantic Slave Trade – A Personal Account',
Stanford VH, 7.30pm
- 23 Clifton Guides Christmas Bingo, Great Witley VH, 7.30pm
- 24 Christmas Fayre, Nora Parsons Day Centre, 2 - 4.30pm
- 24 Concert and pudding evening, Clifton VH, 7.30pm
- 26 Stanford History Group talk,
'Slavery, The French Revolution and the founding of modern Haiti',
Stanford VH, 7.30pm
- 30 Clifton School Friends Quiz night, Clifton VH, 7pm

December

- 2 Clifton Guides Christmas Fayre, Clifton VH, 10am - 1pm
- 11 Clifton WI: How good are your taste buds?, Clifton VH, 7.30pm

**Services in the parishes of Clifton, The Shelsleys and Lower Sapey (Harpley)
November 2018**

Sunday 4th November 4th Before Advent	10.30am	Morning Prayer	St Kenelm, Clifton
	10.30am	Morning Prayer	St Bartholomew, Harpley
	10.30am	Holy Communion	All Saints, Shelsley Beauchamp
	3.00pm	Memorial Service	St Kenelm, Clifton
Tuesday 6th	9.00am	<i>Morning Prayer</i>	<i>All Saints, Shelsley Beauchamp</i>
Wednesday 7th	10.00am	<i>Pushchair Praise</i>	<i>St Kenelm, Clifton</i>
Sunday 11th November 3rd Before Advent Remembrance Sunday	10.30am	Methodist Remembrance Service	St Bartholomew, Harpley
	10.45am	Remembrance Service	St Kenelm, Clifton
	10.45am	Remembrance Service	All Saints, Shelsley Beauchamp
Tuesday 13th	9.00am	<i>Morning Prayer</i>	<i>St Kenelm, Clifton</i>
Sunday 18th November 2nd Before Advent	8.00am	Holy Communion	St Kenelm, Clifton
	10.30am	COME Service	St Kenelm, Clifton
	10.30am	Holy Communion	St Bartholomew, Harpley
Tuesday 20th	9.00am	<i>Morning Prayer</i>	<i>St Bartholomew, Harpley</i>
Wednesday 21st	7.30pm	<i>Time for Time Out</i>	<i>St Kenelm, Clifton</i>
Sunday 25th November Next Before Advent Christ The King	10.30am	Circle Service	St Bartholomew, Harpley
	10.30am	Quiet Reflection	All Saints, Shelsley Beauchamp
	6.30pm	Evensong	St Kenelm, Clifton
Monday 26th	9.00am	<i>Morning Prayer</i>	<i>St Kenelm, Clifton</i>
Tuesday 27th	9.00am	<i>Morning Prayer</i>	<i>St Andrew, Shelsley Walsh</i>

Contact Details:

Revd Canon David Sherwin (Team Rector & Rural Dean) Tel: 01886 888664 Email: davidwin56@aol.com

Revd Anne Potter (Team Vicar) Tel: 01886 832355 Email: revanepotter@gmail.com

Revd Becky Elliott (Curate) Tel: 01886 812451 Email: revrebeccaelliott@btinternet.com

Revd Jen Denniston (Curate) Tel: 01886 853280 Email: jendenniston@gmail.com

Churchwardens Clifton: Barbara Seeley 01886 812763 and Alana Cooper 01886 812520

Churchwarden Lower Sapey: Candy Connolly 01886 853248

Churchwarden The Shelsleys: Jane Froggatt 01886 812215

Parish Email: lizedwards69@aol.com **Website:** www.achurchnearyou.com



'Beautiful harvest service flowers at All Saints and a stunning Remembrance poppy display'.



Your Local Agent since 1898

- ✔ Sale of low to high value residential property
- ✔ Expert advice given on values
- ✔ High quality marketing carried out on all properties
- ✔ Use of several websites to include Rightmove & Primelocation
- ✔ Free "no obligation" marketing appraisals
- ✔ Letting of all types of residential property
- ✔ Full Management or Let only service provided
- ✔ Sale of Agricultural, Commercial & Development property

For a more extensive range of our services visit www.gherbertbanks.co.uk



T. 01299 896 968 ghb@gherbertbanks.co.uk
F. 01299 896 981 www.gherbertbanks.co.uk
The Estate Office Hill House Great Witley Nr Worcester WR6 6JB

Partners
David G F Banks FRICS FAAV
Robert Parry FRICS FAAV
Richard G F Banks MRICS

Associate Partner &
Head of Residential Agency
Tim Gaston BA

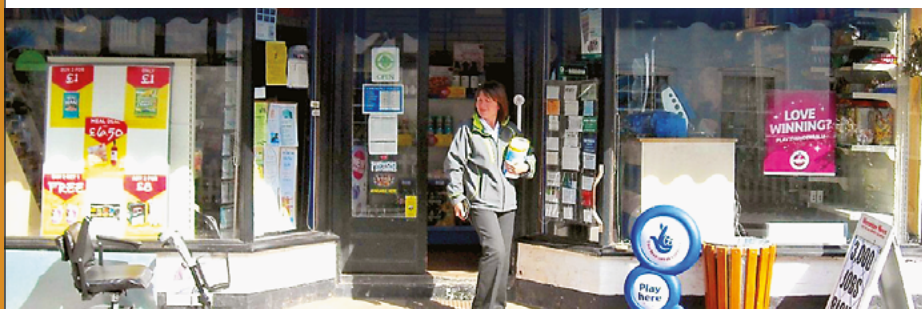


G Herbert Banks LLP is a Limited Liability Partnership.
Registered in England & Wales.
Registered Number OC344076. Regulated by RICS.

The Village Stores

27 THE VILLAGE, CLIFTON-UPON-TEME WR6 6EN

01886 812303



Open 7am-7pm Mon-Fri 7am-6pm Saturday 9am-12 noon Sunday

Contributions for the next (December) edition by Friday 9th November 2018 please, to editortemetriangle@gmail.com

Printed by Orphans Press of Leominster Tel: 01568 612460