

October 2018

Teme TRIANGLE

Clifton upon Teme • The Shelsleys • Lower Sapey



Locally coordinated Stoke Bliss and District annual ploughing match

In this edition

- ✱ **Ploughing match success**
- ✱ **New governors sought for Clifton Primary**
- ✱ **Broadband voucher scheme**



www.temetriangle.net

Free to Residents



Bettie Nicholls and friends enjoy breakfast in the sunshine at Harpley's Big Breakfast on 1st September (for full story and more photos see Lower Sapey news report on page 26)

GUEST EDITOR

Michelle Whitefoot
editortemetriangle@gmail.com

EDITOR / CLIFTON NEWS / WEBSITE:

Jerry Johns: 01886 812304
crown.house@polperropress.co.uk

SHELSELEYS NEWS:

Michelle Whitefoot: 01886 812779
michelle@whitefootpr.co.uk

LOWER SAPEY NEWS:

Marion West: 01886 853249
marionjeanwest@googlemail.com

ADVERTISING/SPONSORSHIP:

Andrew and Anna Brazier: 01886 887898
teme.triangle@thebraziers.co.uk

DISTRIBUTION:

Terry Smith: 01886 812180
tsmith150@btinternet.com

If you or your organisation would like to sponsor *Teme Triangle* please contact Andrew Brazier. The cost of producing TT is £7 per household per year. Donations are encouraged, to: Alden's Farm, Barbers Lane, Martley, Worcester WR6 6QD (cheques made payable to Teme Triangle Community Magazine).

In addition to the usual main distribution points, copies of *Teme Triangle* are also available to pick up outside 8 The Bungalows, Shelsley Beauchamp, WR6 6RD

Opinions expressed in this publication are not necessarily those of the editorial team. Teme Triangle is not responsible for goods and services advertised. Contributions may be edited at the discretion of the editor.

Front cover picture:

For details see our Ploughing Match report (P3 opposite)

PLOUGHING MATCH SUCCESS

Shire horses, cobs, tractors and ploughs were in action for the Stoke Bliss and District Agricultural Improvement Society's annual ploughing match last month at Sutton Park near Tenbury Wells. The event included ploughing, best cereal crops, cookery, homecrafts, handicrafts, produce and a children's section.



Among the teams of horse-drawn ploughs were Crunchie's cobs from Avenbury, near Bromyard. 'Crunchie' featured in *Temе Triangle* in February 2017 when his horses were working to clear land in the Shelsleys.

Pictured with Crunchie in our front cover image are (centre) Charlotte Merrick of Pitlands Farm, Clifton, Secretary of the Stoke Bliss Society, and her mother, Annette Turner from Upper Sapey, who was in charge of the horse entries for the event.

Next year's match will be held at Underhill, Collington, Bromyard on Saturday 28th September 2019.

THREE NEW GOVERNORS SOUGHT FOR CLIFTON PRIMARY SCHOOL

Are you interested in becoming a school governor? Clifton upon Teme Primary School is currently looking for three new Co-opted School Governors and would be delighted to hear from anyone who has:

- An interest in the performance of the school
- A desire to contribute to and represent the community
- An open and enquiring mind
- The ability to look at issues objectively
- The confidence to ask questions and join in debate
- A willingness to listen and make informed judgements
- The ability to work well with others



More information about the role and how the school supports Governor development can be found on its website's Governor page, found under the 'Our People' tab.

If you are interested, please submit an expression of interest to Nick Wain, Chair of Governors, Clifton upon Teme Primary School, Pound Lane, Clifton upon Teme, Worcs, WR6 6DE or via the school email office@clifton-upon-teme.worcs.sch.uk. The expression of interest should be no more than 500 words, explaining your background and why you are interested in joining. If you would like an informal chat regarding the role please contact the school (tel 01886 812258 or email as above), and a member of the Governing Body will contact you.

GIGABIT BROADBAND VOUCHER SCHEME IN WORCESTERSHIRE

In March 2018 the Government announced a £67 million Gigabit Broadband Voucher Scheme to support the cost of installing faster, more reliable full fibre broadband connections for small to medium-sized businesses and the communities around them.

With increasing use of cloud-based services, streamed services, voice and video conferencing, and cyber security measures, gigabit capable connections will allow users to increase download and upload speeds into the future. Small to medium-sized businesses can now claim up to £3,000 against the cost of connection, either individually or as part of a group project. Residents can also claim a voucher worth £500 as part of a group project. One gigabit is the same as 1,000 megabits, significantly increasing connection speeds. The vouchers can be pulled together to fully pay for the new connection.

A spokesperson said: "This Gigabit Broadband Voucher Scheme is an opportunity to expand the full fibre network, especially where communities are not currently included in the Superfast Worcestershire roll out."

To find out whether you are eligible for a voucher and connection to a full fibre broadband supplier, visit <https://gigabitvoucher.culture.gov.uk>. The Superfast Worcestershire Team can be emailed at superfast@worcestershire.gov.uk, or visit www.facebook.com/broadbandworcs

CHECK ON SUPERFAST BROADBAND IN YOUR POSTCODE

Find out about superfast broadband progress in your locality with Superfast Worcestershire's new online postcode checker: <http://www.superfastworcestershire.com/#where-when>

CLIFTON LAUNCHES NATIONAL LOTTERY SYNDICATE

Saturday 13th October sees the launch of Clifton Lot, a National Lottery syndicate of Clifton folk. Currently a group of 18, organisers hope to increase membership but are limiting it to people within the village. The cost to members is £2 per week (£10 every 5 weeks) and entries will be made for both the Saturday and Wednesday Lotto draws.



All communication will be via a private group on "Nextdoor", which is a free facility. For more information contact John Wain via "Nextdoor" or ring 01886 812958.

COME TO CLIFTON FRIENDSHIP CLUB COFFEE MORNING

Over 50s in Clifton are invited to come along to the latest coffee morning being held by Clifton Friendship Club. Marie and Eddie Thompson will be hosting the next one on Saturday 6th October at 26 Village, Clifton from 10am-12noon.

For details contact: Marie Thompson: 01886 812681.



Girlguiding



CLIFTON GUIDES ANNOUNCE CHRISTMAS FAYRE & BINGO

Clifton on Teme's Girl Guides, Brownies & Rainbows are holding two, fun seasonal events in the coming weeks to help raise funds.

A Christmas Bingo evening in aid of the 1st Clifton Guides and St Michael's Hospice is being held at Great Witley Village Hall on Friday, 23rd November. Eyes down at 7.30pm. Any queries please contact Angie Griffiths. Prize donations gratefully received.

A Christmas Fayre table top sale by local Worcestershire businesses is also taking place at Clifton Village Hall on Sunday, 2nd December, from 10am until 1pm in aid of the Clifton Girl Guides, Brownies and Rainbows. The sale will include gifts, decorations, cakes, preserves and other tasty treats. Entry is £2 which includes a drink & homemade cake.

Guide leader Angie Griffiths said: "These are two lovely events and we look forward to lots of people coming along. We are looking for prize donations for the Bingo, and also inviting people to rent tables at the Christmas Fayre at £10 a table, if they have home-made jams or Christmas gifts they would like to sell. If anyone would like one, please get in touch."

For more information, contact:

Angie Griffiths on angiegriffiths@aol.com or 07957 462519

LAST CHANCE TO BUY WALKING CANE RAFFLE TICKETS

Ramblers, dog owners and anyone seeking a special gift for a loved one still have a chance to win a locally made, country 'thumb-stick' worth £100, in a fund-raising raffle in aid of repairs at All Saints Church. The walking cane is hand-crafted from crab apple wood, red deer horn and local oak by Shelsley Beauchamp craftsman Barry Hodgetts.

The raffle will be drawn at the All Saints Harvest Supper on Sunday 21st October. Tickets are £1 each from Barry on 01886 812256 and can be purchased right up until the draw takes place.



NIC SPROSON opticians

52 Barbourne Road, Worcester WR1 1JA

*Professional Eye Care
Exceptional Eyewear*

Contact Lens Specialists
Saturday and Evening Appointments
Patient Car Park

Tel: 01905 27327

www.nicsprosontheoptician.co.uk

SEASONED HARDWOOD FIREWOOD

CUT & SPLIT TO REQUIRED SIZE

Delivered in 1.2 metre bags with crane vehicle

NO STACKING -

NO MESS -

NO PROBLEMS

Contact David 07866 441154

A WOMAN'S TOUCH!



LADY DECORATORS

PAINTING, WALLPAPERING
TILING (WALLS & FLOORS)
INTERIOR DESIGN & ADVICE

CLAIRE LENNARD

01886 889099 ~ 07710 469427

THE OAST HOUSE, MARTLEY, WR6 6QB



REDCABIN COMPUTERS

Friendly and efficient service for your home
&

Business computer system

New & used computers

Upgrades

Software

Hardware

Wired & Wireless Networking

Broadband help and setup

01885 483 839

01547 530 271

07973 358 124

sales@redcabin.net

Meadows Soft Furnishings

by Tracey Birks

Bespoke handmade curtains, blinds,
soft furnishings and lampshades
designed and made for you

No obligation home consultation

tracey@meadows-soft-furnishings.co.uk

www.meadows-soft-furnishings.co.uk

01886 812583 or 07831 818104

MINDFULNESS & MEDITATION

Short courses introducing beginners to the
meaning and practice of mindfulness &
meditation. For more information

Contact Nicky: localyoga@aol.com

07749 176 091



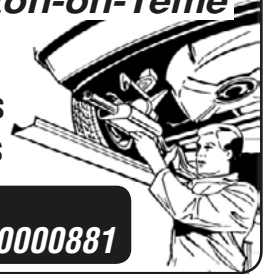
A.M. JONES

*Harpley Works
Clifton-on-Teme*

- MOT Repairs
- Servicing
- Accident Repairs
- Tyres
- Batteries
- Exhausts

Tel/Fax: 01886 853 530

Mobile: 07970000881



WORCESTERSHIRE WILLS

Est. 2013
Clare Burden

MEMBER OF THE INSTITUTE OF
PROFESSIONAL WILL WRITERS
SPECIALISING IN WILL DRAFTING AND
POWERS OF ATTORNEY

APPROACHABLE AND FRIENDLY

COMPETITIVE RATES

FULLY CRB CHECKED

HOME VISITS AND EVENINGS IF REQUIRED

Practising as a successful family lawyer for 8 years until taking time off to have a family, Clare has now set up her own company providing private client services.

To arrange a friendly and confidential consultation,
Contact Clare Burden

T. 01299 879826
M. 07855 350245

E. clare@worcestershiREWILLS.com
worcestershiREWILLS.com

Professional Dog
Walking
& PetCare Services.



www.petsadventures.com

Contact Ruth on: 07736151130 or
email: ruth@petsadventures.com

We are delighted to offer the following
services in the WR6 area:

- Professional Dog Walking
- Dog Home Boarding
- Doggy Daycare
- Pet Companion & Home Visits
- Pet Taxi Service
- Chicken & Small Animal Boarding

DBS



A. H. CALDICOTT & SONS

Funeral Directors

15 MARKET STREET,
TENBURY WELLS, WORCESTERSHIRE
TELEPHONE: 01584 810281
FAX: 01584 811420

*A family
run business
established 1919*

*Burials
Cremations
Chapel of Rest*



- Woodburning & Multifuel Stoves
- Stove Spares & Repairs
- Glass, Ropes, Bricks, Baffles, Cleaners
- Chimney Liner Kits & Flue Pipes
- Kiln Dried Logs, Kindling and Firelighters

01886 812452
www.is-stoves.co.uk

Showroom & Online Shop

Steps Farm
Clifton Upon Teme
Worcester
WR6 6EN

JEREMY MASSEY

Qualified Electrician



Registered
Electrician
– BS7671

- ✓ Household Electrical work
- ✓ Fast, Reliable & Friendly
- ✓ Very high standards met
- ✓ Inspection & Testing

Contact: 01886 888493

West Wind Counselling



Sarah Jeffery MBACP Sapey Common Worcs WR6

For help and support
with emotional pain or distress
including:

- depression, stress, anger or anxiety
- bereavement, loss, setbacks, grief
- low confidence or self-esteem
- relationship difficulties or other troubles

T: 07432 078087

E: westwindcounselling@gmail.com

W: www.west-wind-counselling.co.uk

Please call or email me for
a first confidential discussion.

I look forward to hearing from you.

"It was such a relief to find someone to talk to, who understands and can help me to find my way. I would recommend counselling with Sarah to anyone who is struggling to cope." (Client RP)



Gareth Vaughan Counselling
Bereavement – Depression – Anxiety
Areley Kings – Astley Cross
07544 518276
www.gareth-vaughan.co.uk

ZED YOGA

Yoga classes for adults of all ages:

- Broadwas Village Hall, WR6 5NG
Tuesday mornings and evenings
- Hallow Parish Hall, WR2 6PP
Wednesday mornings

For more information or to book
please contact Zoe Herington:
email: zedyoga.booking@gmail.com
tel: 07962 981456



THE MANOR ARMS

ABBERLEY

Open 12pm - 11pm Every Day
Call 01299 890300



A beautifully refurbished traditional village pub with locally
sourced fresh food and ales.

*Our Head Chef sources top quality local ingredients to create
traditional dishes and exciting specials.*

Overnight stays in our beautiful rooms, available this Autumn!

*You and your guests can be sure of a warm welcome, we look
forward to seeing you soon.*

*Free function room available for local clubs, meetings,
special events and parties.*

The Manor Arms Inn, Abberley Village, Worcestershire WR6 6BN

www.themanorarms.co.uk

Follow us on Facebook and Twitter for news and events.



The Manor Arms Inn Abberley



ManorArmsInn

A. R. VERRY

PLUMBING AND HEATING

Commercial and domestic oil
fired installations and servicing,
including Agas and Rayburns

01886 853023

- T.V. •Video •Audio
- Electronic Repairs
- Microwave Ovens

DAVE PARKER

01885 410711

Mobile 07790 423158

Prompt efficient service at competitive rates

Hilda Webb BSc, QTS, AMBDA

MATHS TUITION - ALL LEVELS
UP TO GCSE GRADE

SPECIALIST TUITION FOR
DYSCALCULIA & DYSLEXIA

01886 812223

THE OLD SCHOOL, SHELSLEY BEAUCHAMP WR6 6RA

C.L. GIBBS
BUILDERS

EXTENSIONS • ALTERATIONS
PLASTERING • UPVC WINDOWS
ROOFING • TILING • LANDSCAPING
FASCIAS • GUTTERING • STONE WORK

For all types of building work call your local
family builder for advice and free estimate

01886 812 450

07905 396 971



STOURPORT WHOLESALE CARPETS

SUPPLIERS OF DOMESTIC & CONTRACT FLOORING

CARPET AT WHOLESALE PRICES

LUXURY FLOORING FOR ALL AREAS
CARPETS SUPPLIED AND FITTED FROM TOP MANUFACTURERS
FITTING BY OUR OWN EXPERIENCED FITTERS
BANKRUPT STOCK AVAILABLE
COMPETITIVE PRICING WITH A PERSONAL TOUCH
SPECIALISTS IN STAIR RUNNERS AND RODS
FAST AND FRIENDLY SERVICE
FOR A FREE ESTIMATE WITHOUT OBLIGATION
PENSAX 01299 666400

PHIL GRAY

Dairyman / Newsagent

*National...Daily...Sunday & Local Papers
...Magazines...All Milk...
...Dairy Products...Eggs...Soft Drinks
...& Waters etc.*

Let your Milkman do the Walking
Phone & Fax: 01584 881385

Blacksmith of Worcester

Distinctive Wrought Ironworks

Bespoke garden furniture, gates, railings,
firegrates/guards, curtain rails & gifts.

Architectural steelwork and restoration.

www.blacksmithofworcester.co.uk Tel: 07969 071847

FRIENDS OF ST KENELM'S

Change of date

Due to unforeseen circumstances the date for the Historical Talk at St Kenelm's will now be Saturday 27th October. The subject of the talk, by Local Historian Heather Rendall, is 'Owain Glyndwr at Woodbury Hill – Fact or Fiction?' Wine and Cheese from 7.15pm. Tickets £7.00.

Dates for your diary

Sunday November 4th at 3.00pm in St Kenelm's, a Service to celebrate the memory of loved ones.

Annual Big Sing: Saturday 1st December in the evening at St Kenelm's

The Annual Big Sing – A Celebration of Carols and Canapes, will be the annual welcome to the decorated Christmas Trees. If you and your organisation would like a tree this year please contact Barbara Seeley at barbarachristineseeley@yahoo.co.uk or put a note in church. Barbara will be in touch with those who have decorated a tree in past years, just to check that you would like one this year!

ALL SAINTS NOTICEBOARD GETS A FACELIFT

Shelsley Beauchamp residents Terry and Carol Smith, and Barry Hodgetts, have volunteered their skills to renovate the display board outside All Saints Church. "It's surprising what new doors and a lick of paint can do," said Carol. "The old display cabinet really did need an update and the three of us were pleased to donate our time and materials. Local notices are now easier to see and protected from the elements."



LETTER TO THE EDITOR: OLD ST BARTHOLOMEW'S

In the June 2018 edition of *Temetriangle*, in the article concerning a Catholic Mass in the old church, it was reported: "More recently, restoration has been carried out by The Friends of Old St Bartholomew's Trust." This is entirely incorrect. On 21st January 1994, Old St. Bartholomew's Church became part of The Churches Conservation Trust (then The Redundant Churches Fund). 'The Friends of Old St. Bartholomew's Church' was then disbanded, as the aim of getting the old church saved had been achieved. The Churches Conservation Trust then spent £100,000 on the preservation of the building and of course continues to maintain it to this day, since the old church now belongs to the CCT and is therefore permanently within that organisation's purview. The annual service that takes place in August continues to be organised by myself, both for the old church itself and to raise funds for the CCT: the collection taken at the service is split, with half going to the upkeep of the old church within the CCT and half going to the CCT for its continuing work.

Pat Prosser

TEME VALLEY WILDLIFE

with Stephanie Mocroft

This month I'm writing about slow worms. There are three types of lizard in the British Isles: the common lizard, the sand lizard and the legless lizard. The latter is better known as the slow worm (or blind worm), although it is not slow/blind and not a worm.



Slow worms are quite common in the Teme Valley. Their Latin name is *Anguis fragilis*. *Anguis* means snake, which it is not, because the bone structure of the skull classifies it as a lizard, plus it does not have the forked tongue of the snake, and it possesses eyelids. The term *fragilis* is appropriate however and refers to the fact that the tail is fragile, readily breaking off if firmly held. This allows a quick escape from a predator, and eventually grows back.

Slow worms are light grey-brown and youngsters have a black stripe down the middle of the back. The underside is lighter. In size, eleven inches is usual for a mature adult. They are thought to be the most long-lived of all lizards and can reach over fifty years old.

Slow worms eat small insects and invertebrates, so they are good to have near your vegetable patch. In August or September six to twelve young are produced from eggs. Young slow worms are about two inches in length. Over winter the creatures hibernate and wake up again in the spring.

The Teme Valley Wildlife group normally holds meetings on the second Thursday of the month. Next meeting: Thursday October 11th at 7:30pm in Stoke Bliss and Kyre Village Hall when Keith Offord will talk on 'Aristocrats of the Air'. Entry £2 on the door; everyone welcome. www.temevalleywildlife.co.uk, call 01584 881397 or email zeunie@hotmail.com

FIND WHAT YOU NEED – SELL WHAT YOU DON'T



Office equipment FOR SALE:

Light oak effect, custom made desk (pictured) - 6ft long with 3 drawers and filing drawer which are free standing. Made by office furniture manufacturer Witley Jones approx. 7 years ago. Very good condition. £50

Two drawer filing cabinet - offers

Printer table on wheels - offers

Swivel office chair Azure blue - offers



To enquire about any of the above items call Chris and Judie Welsh: 07973 744161

To advertise items in next month's Temebay, contact:

Jerry Johns on 01886 812304 or crown.house@polperpropress.co.uk

MEET DR LAURA TAYLOR – SHELSLEYS’ FIRST FEMALE PC CHAIRMAN

Temetriangle interviews local resident Dr Laura Taylor, newly appointed chairman of The Shelsleys’ Parish Council and small animal vet.

Has there been a previous female chairman of Shelsleys’ PC?

I am the first female chairman of The Shelsleys’ Parish Council. The council’s first meeting was in 1955 and the position has been held by men since then. I wasn’t aware of being the first female chairman until after being appointed. In recent years women have been very well represented on the council, so it was only a matter of time that one of us decided to take on the role.

Did it feel daunting to step into the chairman’s role after only a few months as a Parish Councillor?

Yes! It has been a steep learning curve over the last two months. Jan, the Clerk, and the other councillors have been incredibly patient and supportive of me. Cassian, the last chairman, has been a wealth of knowledge also. I think to have someone who is completely new to the parish council as the chairman is a great opportunity to address long-standing issues with a fresh pair of eyes.

What are the priorities you would like to see the PC build on in the coming year?

Initially I want to improve our engagement with the local parishioners. We are here to represent the community, which means that we need good communication with our parishioners. I’d like them to feel welcome to contact us with any concerns or suggestions, increase participation during council meetings, and improve how we report back to the community. Once we are working as a team we can start tackling other issues. At the moment we are working to improve the community’s relationship with the Shelsley Walsh Hill Climb, and we continue to fight for better broadband speeds.

How do you balance the demands of being a busy vet, with acting as PC chairman?

I normally work until 7pm, so I have been booking time off to make sure I attend meetings! Aside from that I don’t see it as work, I enjoy interacting with people and trying to solve problems. It’s very similar to being a vet, apart from the surgery, some parish council duties are trickier than an operation!



What do you love about living in the Teme Valley?

I might be biased but I think it is the most beautiful place in the world. When I look out on the landscape I feel at peace. Whilst I only moved here to live 2 years ago, my parents have lived in the Valley for 20 years, so I have friends here that I love like family and know me better than anyone else.

What would you like to say to local residents?

I would like to invite them to our meetings, we need you to tell us what's important to you. We are here to serve the community so it's your opinion that we want.



CLIFTON RESIDENTS MEET THEIR LOCAL COUNCILLOR

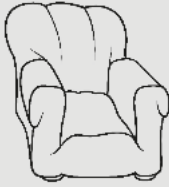


Malvern Hills District Councillor Caroline Palethorpe (pictured 5th from left) held an informal 'surgery' with members of the weekly Clifton Coffee Morning group at the Lion Inn last month. She was accompanied by Christine Butler from MHDC (4th from left in the photo). Local residents raised a number of topics, including new housing development in the village, traffic and roads and matters relating to Clifton Parish Council.

ROYAL MAIL TARGETS SCAM POST

The Royal Mail is urging anyone who thinks they, or someone they know, are receiving scam mail through the post to contact their scam mail team. A spokesperson said: "Scam mail is illegal mail that targets the most vulnerable. It is not normal advertising mail. If someone you know is receiving a large amount of mail and possibly sending money in response to this mail, they could be a target of scammers." Anyone with concerns can contact the Royal Mail scam mail team on 0800 0113 466, email scam.mail@royalmail.com or write to FREEPOST SCAM MAIL.





HUNTLANDS FARM BED & BREAKFAST AND UPHOLSTERY

www.huntlandsfarm.co.uk

Tel: 01886 821955 / 07828 286360

OFFERS:

upholstery classes • upholstery commissions
en suite b&cb accommodation • wedding venue
all in an idyllic, rural setting on a working farm.
And a self-catering, 6 bedroom farmhouse on an
adjacent farm, www.moorhallfarm.co.uk

*Your hosts, Lucy, a custom upholsterer and
Stephen, a passionate cook, guarantee you a comfy
stay with freshly prepared, local food to enjoy.*

ANDREW JELLEY OPTICIANS

18 Teme Street Tenbury Wells

01584 811445



www.andrewjelleyopticians.co.uk



NORA PARSONS CENTRE

Venn Lane, Wichenford, WR6 6XY

Open Mondays and Thursdays 9.30am - 3pm for
good company, refreshments, including a hot lunch,
board games, and exercises.

Also on offer a visiting hairdresser, and a podiatrist,
If transport is a problem we can collect you and take
you home at the end of the day.

Phone 01886 888374

MARTLEY OSTEOPATHIC CLINIC

Osteopathic treatment
for infants to adults
including cranial techniques

01886 889 002

Mark Roughley

GOsC

Registered Osteopath

Maylite Business Centre
Maylite Trading Estate
Martley, WR6 6PQ



Charity number: 1056248



Monday-Friday
9am-3.15pm
Ages 2-5



Forest School Sessions

Full & Half Days Available
Indoor & Outdoor Facilities Available
ALSO!

Breakfast Club 8am-9am
After School Club 3.15pm-6pm
Ages 2-13



Martley CoE Primary School
Martley Worcester WR6 6TJ
01886 889127



...a fun place to
play and learn!

www.martleypreschool.co.uk

Ombersley Family Dental Practice

MRS ANDY WRIGHT B.D.S. (EDIN)

A friendly private practice specializing in preventive dental care for all the family in a happy relaxed atmosphere.



New patients welcome

Cosmetic treatments including tooth whitening

Sports gum-shields for all ages in various colours and designs

Same day emergency appointments

Large car park

Tel: 01905 621881

**RACKS LANE, OMBERSLEY,
NR DROITWICH, WORCS. WR9 0EN**

www.ombersleyfamilydental.co.uk



K.B. CATERING

**TAILOR MADE QUALITY MENUS
FOR ALL YOUR CATERING NEEDS
KIT BAMFORD**

Based at The Birche, Shelsley Beauchamp, a special venue with unique ambience for wedding ceremonies and other celebrations, as well as other outside catering requirements, please call me on:

01886 812251 or 07801 699597 or 01905 345200

Email: kitbamford@live.co.uk

**SERVICED OFFICES AND WORKSHOPS
AVAILABLE ON FLEXIBLE
MONTHLY TERMS
ALSO SMALL INDUSTRIAL UNITS**

www.maylite.co.uk

Please contact Kate Shrubbs on
01886 888455 for more details

MAYLITE Business Centre

Maylite Trading Estate, Martley WR6 6PQ

Tipton Hall Riding School

Riding lessons-for all ages and abilities.

Hacking-through wonderful countryside.

Horse Livery-small friendly yard.



Roger Benbow
BHS(A) Reg. Instructor

Phone: 01885 488791
mobile: 07792 358741
www.tiptonhallridingschool.com

Clifton-upon-Teme

Early Years Centre



Offering quality childcare
and
pre-school education
For 0-5 year olds

Open 7.30am - 6.00pm
Experienced qualified staff
Flexible hours
Ofsted Registered
Nursery Education Grants available

Also offering job opportunities for
professional, committed staff
looking for support in their
career development.

For further details,
please telephone the Manager
at the Centre 01886 812380
The Village, Clifton-upon-Teme,
Worcester WR6 6DE.

HAINES HEATING & PLUMBING

**A Friendly local service
Call: 07534 700 932**

All aspects covered from dripping taps
to full heating install:

Office: 01886 812639
Email: alex@haines4heating.co.uk
20 Saxon Close, Clifton upon Teme, WR6 6DL
www.ahainesheating.co.uk



SERVICING & REPAIR ALL TYPES OF GARDEN MACHINERY



BRIAN BUTLER

Clifton-on-Teme
07929 014804 Daytime
01886 812538 Evening

COLLECTION and DELIVERY

NICK CHAMPION
PROPERTY | AUCTIONS | AGRICULTURE | PROFESSIONAL

**YOUR LOCAL PROFESSIONAL,
INDEPENDENT RESIDENTIAL &
RURAL PROPERTY SPECIALIST.**

- SALES
- AUCTIONS
- LETTINGS
- ACQUISITIONS



NICK CHAMPION LTD

16 Teme Street, Tenbury Wells, Worcestershire, WR15 8BA
Tel: 01584 810555 Email: info@nickchampion.co.uk
www.nickchampion.co.uk

PC Troubles?

- PC problems solved
- Broadband connection set-up
- Home network set-up
- Printer and camera problems solved
- Website design service
- Basic PC training at home



*For friendly and local advice and to
book a free consultation contact*

Bernadette Higgins on 07813 302 504
or e-mail: apctrouble@gmail.com

LUXURY CATTERY

Call Lesley on 01886 821154

- New luxury Cattery set in beautiful open countryside. Run by genuine cat lover.
- Fully Licensed and Insured.
- All chalets have heated bedrooms and spacious play runs.
- Special needs and diets catered for.



Kitty's Cattery

Coronation Cottage, Broadwas (Nr. Martley), Worcester, WR6 5NT
www.kittycattery.co.uk kittycattery@hotmail.co.uk

TAYLORS CONSERVATORY CARE

22 Saxon Close
Clifton upon Teme
Worcester WR6 6DL



Mobile: 07801 281821
Tel: 01886 812424
Fax: 01886 812954

Sales • Service • Repair

SUPPLY • INSTALLATION • AFTER SALES CARE • RE-ROOFING

We supply and fit:

Aluminium Windows and Doors • uPVC Windows and Doors
Hardwood and Softwood Windows and Doors
Conservatories in Hardwood / uPVC / Aluminium

PILKINGTON APPROVED INSTALLERS

Agents for Compton Garages & Alton Greenhouses

Please phone for Free Quotation • Fence Registration No. 18796



RED KITE Pest Control



&
Wildlife Management

Combining Tradition and Innovation

For all your local Pest Control requirements
Flexible Contracts ~ Individual Treatments
BPCA and NPTA Qualified

All **INSECT** Pests
All **RODENT** Pests
All **WILDLIFE** Pests

Specialized Trapping service
Pest Prevention and Proofing
Cleansing, Decontamination, Disinfection

Free Advice
Free no obligation Quotations

Telephone **Andy Staples on:**
07977 044987 / 01886 832730

TVA

TEME VALLEY ACCOUNTS

Bookkeeping VAT
PAYE Sage Accounting
Tax Returns Draft Accounts

Contact: Claire on
Tel: 01584 881708 or 07731 010099
Email: Claire.tva-accounts@outlook.com

Party / Business / Reception / Function

CLIFTON VILLAGE HALL

Three meeting rooms (2 – 120 people)
Modern, well equipped kitchen
with crockery, glasses etc.
Good parking in central location

**Bookings: 01886-812464 / 812238/
812969 / 812335 or
hallshire.com**



Home Tutoring

KS2 **English** and **Maths**
English Literature and **Language**
to A Level

Beginner's **French** and **Italian**
Latin and **Classical Greek** to GCSE
Beginner's piano lessons

Paul Tiffany MA, PGCE
Catherine Owen MA, PGCE

Both CRB checked
01886 812420
pltiffany@aol.com



Self Storage Units

20ft Shipping Containers
at Stanford Bridge

Under cover
Security lighting

Please contact Alex
on 07973 624318
or 07966 865015



S H E L S L E Y

VILLAGE HALL FOR HIRE

Set in beautiful surroundings
(with french windows leading onto terrace)

Close to the river and hillclimb

Well equipped kitchen • Bar available

Ideal for meetings, dances, parties etc.

VERY REASONABLE RATES

Contact for bookings

Dave Bates 01886 812551

www.shelsleys-vh.uk

purethyme
holistic therapies

Make Pure Thyme your Time
Reflexology, Massage,
Aromatherapy, manicures
and pedicures.

Treatments carried out in the beautiful
Teme Valley setting of Pitlands Farm, Clif-
ton-upon-Teme.

Please enquire about gift vouchers,
home visits and pamper parties.

Julia Haywood

01886 812623/ 07964 176747

info@purethyme.co.uk

www.purethyme.co.uk



Follow us on Twitter and Facebook



Paul the Painter

Professional painter & decorator
in Clifton-upon-Teme

Interior & exterior, from a single room to a whole house

Tel 01886 812168 / 07759 298754

E-mail paulthepainter23@msn.com



Physiotherapy for both
women and men's health,
looking holistically at the
individual, advising on
key health messages to
help improve lifestyle and
well being.

fionacarterphysio.co.uk

Mobile 07712 032998

Email fi.carter.pyf@gmail.com

Are Your Locks Behaving Badly

Check A Lock Fix A Lock

- No Call Out Charge •
- Free Onsite Estimates •

**All Types of Door & Window Locks
Opened • Repaired • Serviced
Jammed Doors • Faulty Locks
Lost • Broken or Poorly Cut Keys
Wooden-UPVC Door & Window
Multi-Point Lock Repair Specialist
Doors Adjusted & Realigned
No Job Too Big or Small
For More Advise Call Stewart**

THE LOCKSMITH

01905 570 999 07871 44 20 11

Local Reliable Independent Locksmith

www.locksmithworcestershireshire.co.uk



Contact: Juliet Twinberrow
Tel: 01886 821408 Mob: 07772 799754
Email: info@housevet.co.uk
www.housevet.co.uk

Lizzie's
Chauffeur Services



Liz Whittaker - lady chauffeur
Affordable Comfort Travel in Style
Transport solutions for up to eight passengers.
All air and seaport. Wedding and sporting events.
Local and National journeys. **07814 006179**

the **snug**
beauty & therapies

revitalise & relax at mill farm
stanford bridge WR6 6SG

01886 853296 • 07989 529215

please call for an appointment

latest technology in non-surgical facelift, oxygen facials & glycopeels
phone us to book a complimentary demo



FUTURE EVENTS:

Friday 5th October The Ukapellas
Saturday 6th October Pub night
Friday 2nd November Dan Greenaway
Saturday 3rd November Pub night
Friday 9th Tenbury YFC Bonfire night (TBC)
Friday 7th December Big Sister
Saturday 8th December pub night

Opening times:

Fridays 5pm till midnight,
Saturdays 12noon till midnight
Sundays 12noon til 8pm

Only Open the first weekend of the month



Opening Times:

Mon - Fri 9.00am - 6.00pm
Saturday 9.00am - 5.00pm
Sunday 9.00am - 1.00pm

Daily newspapers and milk, Swifts bread,
Local Meats, Pies, Cheeses and Produce,
Bowkett's products, Tanners wines, Ales
and General groceries

MILL FARM, STANFORD BRIDGE

Telephone: 01886 853 596

WILLOW & WELLS
ENGLAND

**INTERIOR DESIGN
CURTAIN MAKING
SOFT FURNISHINGS
LUXURY GIFTS
LADIES FASHION**

MILL FARM, STANFORD BRIDGE
01886 853336
www.willowandwells.co.uk
Tues to Sat 9.00 - 3.00pm

the den
CAFÉ BAR

A warm welcome and a glowing fire awaits you
at The Den. Just perfect for a catch up with
friends over coffee and cake or a more relaxed
lunch with a glass of something nice!

We can host your special celebration too –
bookings by arrangement.

Opening Times:

Mon to Sat 8.30am-4pm
Sunday 9am-2pm

Telephone: 01886 853 800

Minutes of the Annual Council and Ordinary Meetings of Clifton upon Teme Parish Council, both held on 26th July 2018

Excerpts provided by Clifton upon Teme Parish Council.

Minutes of Previous Meetings of the Council: Minutes of the Ordinary Meeting of Clifton upon Teme Parish Council held on 7th June 2018 were approved (MN/RH) and signed by the Chairman as a correct record.

Progress Reports/Updates on Matters Previously Considered, relating to outstanding items not mentioned elsewhere on the agenda: Defibrillator commissioned.

Planning

Location: Gatley, Old Road, Clifton Upon Teme, WR6 6DR. Proposal: Rear two storey extension, and external changes to windows. Applicant: Timothy Clark. Members resolved (BY/RH) to support the application.

Application: 18/00848/FUL. Location: Holiday Cottages at Pitlands Farm, Clifton upon Teme. WR6 6DX. Proposal: Change of use of agricultural building to tea rooms, replacement of agricultural building with multi-purpose room and formation of car parking area. Applicant: Ian Mann. Members resolved (MN/BY) to support the application which accorded with the objectives in the Clifton upon Teme Neighbourhood Development Plan to encourage local businesses and economic development.

National Planning Policy Framework: Members noted the Clerk's report in relation to the revised National Planning Policy Framework, CPC's Neighbourhood Development Plan and a conversation with MHDC planning strategy: await MHDC's determination of the implications for district planning. MHDC officer promised a briefing for town and parish councils involved in NDP during mid autumn 2018.

Statement re Pound Lane and Parish Council meeting with Lovell Director

"The Parish Council has been increasingly frustrated and concerned by the activities at Lovell's Pound Meadow site over recent months and has repeatedly spoken to site management. The Parish Council have also involved the Police and the Health & Safety Executive's assistance - but sadly improvements only lasted a day or two. The Parish Council therefore contacted Lovell's Head Office and demanded to speak to a member of the board. Lovell's were extremely concerned about the practices reported to them and agreed to meet PC representatives on site. On the 13th June, Lovell's Regional Operations Director visited the site and met with the Parish Council. The outcome of the visit was positive for the community – a new Site Manager and a new Banksman are now in post and all the concerns raised by the PC have been addressed. The Parish Council has been asked to convey to local residents Lovell's apologies for any frustration, disruption or inconvenience caused in the past. The Parish Council has received a guarantee that no such future problems will arise. To date there has been no repeat of the activities/practices which caused concern."

Finance: Bank Reconciliation: Members noted the tabled report. Income: Members noted that no monies had been received since the June meeting. Payments to be made in respect of outstanding invoices and requests for payment totalling £1,804.87 were approved (MN/NP).

Property related matters: Water damage to the Sports Pavilion: 3 quotations obtained by CPC, Clerk will forward to insurance broker.

The complete version of the Approved Minutes can be found on the Parish Council website: <http://clifton-upon-teme-pc.org.uk/>. If you would prefer the PC to email a copy of the unabridged Minutes to you each month please let one of the Parish Councillors or Clerk have your details and email address.

Excerpts from District Councillor Caroline Palethorpe's Report for Clifton Parish Council meeting: 6th September 2018

Latest economic summary: The August 2018 edition of the Worcestershire Monthly County Economic Summary has been published. The claimant count in Malvern Hills for those aged 18-64 currently stands at 490, which is a decrease of ten on the previous month, but up 60 for the same period 12 months ago. The claimant count proportion* in Malvern Hills is 1.1% of the 16-64 population, which is the joint lowest across Worcestershire (Worcestershire 1.5%, England 2.1%). The number of 18-24 year-old claimants stands at 115 – a proportion of 2.4% of this particular group of the population (Worcestershire 2.4%, England 2.8%).

For the full summary visit http://www.worcestershire.gov.uk/info/20044/research_and_feedback/673/worcestershire_county_economic_summary. You can also download the Worcestershire Local Economic Assessment, which contains information on productivity, business demography, the labour market, skills and education.

Parish and Town Council Forum: Following the success of the forum takeover in April, we have agreed to change the format of the forum schedule. April and October will be standard forum meetings, with a takeover in the summer and a clerk networking event in the winter. Next up is a forum on Monday 22 October, 6- 9pm. If you have any items for the agenda please let Claire Vaughan know, emailing her at claire.vaughan@malvern hills.gov.uk.

Worcestershire County Council is working with group buying experts, iChoosr, to help as many residents as possible seek a better deal on their electricity and gas bills. With collective action, it's possible to gather a large number of people who want to switch supplier easily and who want to pay less for their energy. Find out about this scheme at www.worcestershire.gov.uk/energyswitch. The switching process is quick and easy and is open until midnight on 8 October.

Environmental activities for October half-term: We will be holding a series of environmental themed activities and campaigns during the October half-term (w/c 29 October). Activities include litter picks, a staged fly-tip, 'poo trees' across the district (we will be decorating some trees in poo bags filled with soil and some messages about dog fouling, along with promotion of green dog walkers), and a social media campaign. For information contact Claire Vaughan on 01684 862449 or email claire.vaughan@malvern hills.gov.uk if you would like to be involved.

Older People's Showcase event: Taking place on Tuesday, 9 October, 11am- 2pm at The Malvern Theatres in support of World Mental Health Day, this event, run by Malvern Hills District Council, is an opportunity for older people, their family, friends and carers to find out about services and activities available in the area to help residents age well and live independently in their own homes for longer. Free activities include Dementia Friends sessions and a Strength and Balance taster session. For more information email communityservices@malvern hills.gov.uk.

*Councillor Caroline Palethorpe, Teme Valley Ward, Malvern Hills District Council.
Tel:07974 966412 caroline.palethorpe@malvern hillsdc.net*

Draft Abbreviated Minutes of The Shelsleys Parish Council Meeting held on September 11th 2018

Present: Dr Laura Taylor, Mr William Sutherland, Mr David Styles, Mr Bernard Hart, Mr David Bates, Mr John Stinton, Mrs Carole Warren, Mrs Karen Metcalfe and Mrs Karen Webber.

Declaration of Interest: Councillors Stinton & Bates for Village Hall item, Hart for MAC item.

Minutes: The Minutes of July 10th 2018 were accepted and agreed as a true record.

Public Question Time: One question about notice boards. There is no longer a notice board at Shelsley Walsh, the main notice board is now at the Village Hall, notices are also on the WCC and Teme Triangle websites

County Councillor's report and District Councillor's report: Both written reports available on the website.

Dog Waste Bins: Cost of bins is approximately £210. MHDC does not empty them. The Lengthsman to be asked before a decision on purchase is made.

Shelsley Walsh Hill Climb: Two representatives from the Midland Automobile Club (MAC) Robin Webb and Mark Harrison were welcomed and invited to discuss the concerns of both the Parish Council and local residents.

FOOTPATH CLOSURE: For safety reasons footpath rights of way are waived during events. Closure requests are submitted to WCC each year. This year the Parish Council has been asked by the Motor Sports Association for its opinion on the road/footpath closures and to submit any comments by October 5th. This is effectively no different to any other year but is the first time the PC has been consulted. There was no objection to the continuing closures providing that due notice was given on the footpaths. Mr Webb explained notices with dates are posted at each end of the footpaths in question, ie at the top and the main gate. Access to St Andrew's is maintained at all times.

MOTOR NOISE: The Parish Council has received complaints of excessive noise early in the morning. The MAC has a self-imposed restriction of 110 decibels and no use of the tannoy until 9.30am. There is currently no time limit at the end of the day but this will be discussed at a future MAC committee meeting (October). A Director of the MAC must be in attendance at any event including non-MAC events.

TRAFFIC: The MAC is not allowed to interfere with traffic flow and as such placing marshalls along public roads is illegal. Police have been invited to attend but due to lack of resources this has not been possible. Most of the problems are due to young drivers attending events.

MAC signs are placed on event days on routes to the Hill Climb and yellow AA direction signs are paid for by the MAC, however the MAC is willing to provide and pay for more signage on event days, the wording to be decided by the Parish Council.

There are no suggested instructions on the Shelsley Walsh Hill Climb website as to the best route to take or for drivers to drive in a considerate manner.

There are cameras installed on the hill to discourage undesirable use.

SPEED LIMIT: There is no speed limit along the Shelsley Walsh road between Ham Bridge and Stanford Bridge. The Parish Council has asked WCC for an appraisal for imposing a speed limit in the past (refused due to lack of criteria) but will ask again for a 40mph limit.

INCREASED ACTIVITY: The PC has received complaints about the increase in activity.

Robin Webb explained that events are limited to 30 per year by a licence with the Winnington Estate. This is for events using the hill, therefore the Breakfast Club is excluded from this number. An entry fee for the Breakfast Club has been introduced. DRIVING SCHOOL days are counted as one of the 30 permitted days but noise is restricted as vehicles are silenced road going cars.

PLANNING PERMISSION: The MAC does not require planning permission to operate, the hill climb has been in existence since 1905.

NON-MAC EVENTS: The Retro Rides was a cause of noise on the campsite as well as increased noise and traffic along the lanes. Campsite gates are closed at 10pm to limit car arrival and future events will employ security staff from 6pm to 8am the cost to be borne by the hirer.

Weddings: The noise should be limited to the licensing hours.

COMMUNITY: The Hill Climb raises over £20,000 for charity and is of economic benefit to some local businesses, however Councillors thought there could be more interaction with local residents. The MAC emails details of events monthly to those who have requested it. It was suggested that these dates may also be put in the *Temer Triangle*.

The MAC was encouraged to be more sympathetic to those residents not interested in the Hill Climb and who would therefore not avail themselves of its facilities.

Highways, Footpaths and Lengthsman: There was no Lengthsman's Report. Worksheets from April to August were submitted. Lengthsman to be reminded to submit them monthly. It was suggested that photographs of work undertaken should be submitted.

Force Bank subsidence: WCC report, no remedial work at present required.

30 mph wheelie bin stickers: MHDC to be asked if there are restrictions to placing these on bins.

Pard House Lane road surface and drainage update: Clerk to check with WCC.

Correspondence: All items emailed or viewed at the meeting.

Planning: To report on MHDC decisions.

18/00706/HP Stirt Farm (approved).

18/00979/LB Hillside Camp Lane Shelsley Beauchamp (approved).

18/01270/HP Lilac Cottage Camp Lane. It was decided to defer the decision as the application had been received today and views had not been formed.

Village Hall Management Committee: Neither Councillor Bates or Stinton are able to report as they have a declared interest. It is essential that another Parish Councillor is appointed to attend meetings, A report will be submitted after the next meeting of the VHMC in three months.

Finance: Payments agreed - HMRC PAYE £147.40, Lengthsman £660.00.

Councillors' Reports and items for future agenda.

The meeting concluded at 8.40. **Date of the next meeting: November 13th 2018**

To view the minutes and agenda online go to the WCC website and look at The Shelsleys: <http://e-services.worcestershire.gov.uk/myparish/>

Jan Speyer, Clerk 01886 812444

J & S Trade Supplies



**TRADE
SUPPLIES**

Haven Nurseries
Bank Road
Little Witley
Nr Worcester
WR6 6LR

Tel: 07966-804007
Tel/Fax: 01886-888024
VAT No: 824 6536 21

Partners: JT Bull & SR Bull

Suppliers and Installers of:

Aluminium Windows
Aluminium Bi-Folding Doors
Hardwood and Softwood Bespoke Timber Windows,
Doors and Conservatories including
Grade I and Grade II listed
Secondary Glazing and Replacement Sealed Glass Units
UPVC Windows, Doors and Conservatories
Garage Doors, Fascia and Soffits
We now also specialise in small building projects including
carpentry and joinery

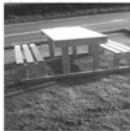
**PLEASE CALL FOR A FREE NO
OBLIGATION QUOTATION**

BILLS GARDEN GATES AND TIMBER PRODUCTS

- Garden Furniture
- Log Stores
- Chicken Runs
- Aviaries



- Storage
- Decking
- Fences
- Your Choice



...and more made to order locally from FSC treated or untreated timber. Bespoke and renovations also undertaken

For more information contact Bill

- Tel: 07580 274999
- Great Witley 01299 896681
- Website: www.billsgardengates.co.uk
- Email: billsgardengates@btinternet.com



www.facebook.com/billsgardengates

COLIN GRIFFITHS

GROUNDWORKS CONTRACTOR

MARTLEY, WORCESTERSHIRE

"A Business
built on
a solid
foundation"

Main Sewer Connections
Septic Tanks
Foundations to D.P.C.
Concrete & Tarmacing
Site Clearance
Foul & Storm Drainage etc.

For all your
private &
industrial
groundworks

For a personal and efficient service
please contact Colin on,

TEL. 01886 821283 MOB. 07836 772501

Providing High Quality
HomeCare

Eclipse HomeCare
making a difference

**Excellent
Care from
Local
People**



- We have a full range of hourly, daily & live in services
- Specialists in Dementia, MS & Alzheimer's care
- Longstanding teams of dedicated local caregivers
- Excellent reputation with Private Clients, Worcester County Council and CQC (Care Quality Commission)

Eclipse Homecare has been operating in this area for almost 10 years and is an Award winning local business. Speak to us today to find out more about how we can help.

www.eclipsehomecare.co.uk

Worcester 01905 641 070	Malvern 01684 869 432	Kidderminster 01562 535 420	Bromsgrove 01527 573 949	Teme Valley 01584 812 594
-------------------------------	-----------------------------	-----------------------------------	--------------------------------	---------------------------------

LEE JAMES CARPENTRY & JOINERY

Qualified and experienced in all aspects of carpentry

- Kitchens supplied and fitted
- Roofing
- 1st and 2nd Fix
- Renovations – old & new
- Oak timber frames
- Plastic fascia & soffits
- Loft conversions
- Doors & windows

Quality and Satisfaction Guaranteed

For free quotes, competitive prices and a professional service phone:

**(01886) 821151
07779 073870**

Chimney Sweep

Andy Johnson

- Certificate issued
- Weekend/Evening sweeps available
- Traditional brush/Power sweep



01886 821933 / 07798 790913



REGISTERED MEMBER
www.instituteofchimneysweeps.co.uk



LOCAL PILATES CLASSES EVERY DAY

including a new ante natal class at
Wichenford on Monday evenings

Please contact **Sue Bratton** for more details or to book a place **07974 343609** or sue579@icloud.com



Naturally beautiful & fragrant
British flowers for all occasions
kate@camomilecornflowers.co.uk
01886 812184 07887 706147

adrianmackwell

AUCTIONEER & VALUER

m 07554 004028 t 01886 812575 e amackwell@gmail.com

Custard Cottage, Clifton on Teme, Worcestershire, WR6 6EW

Specialist valuations of Antiques,
Fine Art and House contents for:

Probate/Inheritance tax,
Sale by Auction, Marital Separation
Sales by auction arranged
House clearance service available

www.adrianmackwell.com

PROBATE/INHERITANCE TAX

"Sympathetic and straightforward"

CLEARANCE

"Thorough and efficient"

AUCTION

"Honest and approachable"

INSURANCE

"Clarity and discretion"

www.adrianmackwell.com



- Bookkeeping Services
- Personal Tax Returns
- VAT Returns
- Payroll
- Management Accounts
- Year End Accounts
- Corporation Tax Returns
- Budgeting & Forecasting

Rachel Perks

ACMA CGMA FIAB

Tel: 07484 161382

rachel@perksaccountancy.co.uk

www.perksaccountancy.co.uk

Laugherne Farm House, Martley
Worcestershire, WR6 6QB

LOWER SAPEY NEWS

Susanna Everitt, the new parish clerk to the Lower Sapey Parish Meeting: "I am somewhat daunted to be following in the very capable footsteps of Jacqui Dossett who has retired from this voluntary job. Ashley Jones, Chair, interviewed me and I hope doesn't regret his decision - though I now pop in to see him frequently. Lower Sapey is the neighbouring parish to Clifton upon Teme and the status is Countryside. There is a meeting four times a year and I have to place the agenda on the notice boards around the parish, which goes from Pound Lane in the east with a board at the end of Hill Farm to the Bromyard/ Stourport Road where there is another notice board in the hamlet of Tedstone Wafre and two in the hamlet of Harpley. It is a Meeting and not a council, so although we have a Chair and a Vice Chair - Steve Younge and an Agenda, everyone participates in the discussions. The meetings are lively and interesting and help develop the community spirit of the parish. It would be lovely to see people from Pound Lane - this would be a real benefit to the parish. Various key members do most of the work organising functions such as The Big Breakfast, Bart's Art Festival and the Royal Wedding tea party which happen in the church and car park which is the village communal space. We had our defibrillator some years ago so there will soon be some revision training by Liz Younge. I look forward to participating more actively in the community (where I have lived for fifty years) after attending my first meeting! And thanking Tony Dipple for being an internal auditor for the accounts." S.E.

All thanks to Susanna for stepping up.

On 1st September in glorious sunny weather we had Harpley's Big Breakfast. This time we added a cake sale and lots of people chose a cake to take home for tea. A big thank you to all our wonderful bakers for their delicious donations! The breakfast and cake sale made £504.74 which will be another step towards the water supply arriving.



Locals tuck into their big breakfasts



A cake sale added to the event proceeds



Betty (front) and Annabelle, grandchildren of Tony and Dorothy Verry, hope Grandma is buying suitable cakes for tea

Our next big date will be Saturday 24th November when we are hosting a concert by Vocal Score in Clifton Village Hall. This will be a pudding occasion with the usual coffees, teas and soft drinks - you may like to BYOB of beer or wine! Note the date in your diaries.

We recently received an e-mail from Roy Smith asking about family members who had been born at The Salt Box in 1859. If anyone has any history knowledge he would be grateful. Contact Marion West for his details.

LOWER SAPEY NOTICES

- October church cleaning and flowers are for Marion West.
- Ladies Bible Study will be hosted by Margaret Griffiths on Tuesday 9 October at 2pm.

Services

- Sunday 7th October Morning Prayer at 10.30
- Sunday 14th October Methodist Service at 10.30
- TUESDAY 16th October short morning prayer 9am
- Sunday 21st October at 3pm we will have our Harvest Festival followed by harvest tea. Please bring along a plate to share - savoury and sweet nibbles.
- Sunday 28th October informal Circle Service at 10.30

Marion West

TOFFEE APPLE TIME!

With Halloween on 31st October, here's how to turn this season's apples (home grown?) into a delicious toffee treat.

Ingredients / items needed

- 8 green or red apples
- 400g golden caster sugar
- 100ml water
- 1 tsp vinegar
- 4 tbsp golden syrup
- Optional, to decorate: popcorn, sugar strands, crushed nuts
- 8 wooden skewers or lolly sticks



www.bbcgoodfood.com

Method

1. Place the apples in a large bowl and cover with boiling water (in two batches if needed) to remove the waxy coating and help caramel to stick. Dry well and remove stalks. Push a stick firmly into the stalk-end of each apple.
2. Lay out a large piece of baking parchment and place the apples on top. Tip the sugar and water into a large saucepan. Bring to a simmer and cook until the sugar dissolves, then stir in the vinegar and syrup. Set a sugar thermometer in the pan and boil to 150C or 'hard crack' stage (If you don't have a thermometer, test the toffee by pouring a little into a bowl of cold water - it should harden instantly and, when removed, be brittle. If it's soft, continue to boil).
3. Working quickly, dip and twist each apple in the hot toffee until covered, let any excess to drip off, then place on the baking parchment to harden. Repeat with the remaining apples, gently reheating the toffee if needed. Roll the toffee apples in your chosen edible decoration while still slightly warm. Eat only when completely cooled. Can be made up to two days in advance, stored in a dry place.

Recipe by www.bbcgoodfood.com

Church Matters

by Beth Whittenbury



*'Serve the Lord with gladness and
come before his presence with a song'*

Many of us remember hymns from our schooldays and for irregular churchgoers these are often the only familiar points of contact. Surely most folk recognise *'All things bright and beautiful'*! Music is mentioned throughout the Old Testament accompanying prayer and praise, although today the organ and occasionally the Rural Dean's rousing guitar have replaced harps and ram's horns!

We know that we can pray anywhere and God will listen but if we bring *Prayer* - *'wherever two or three are gathered together'* - and add *Praise* to it, we have an act of worship: a joining together to give thanks and praise, to ask for forgiveness and help. Psalms like *'The rivers of Babylon'* and *'The Lord is my Shepherd'* are comforting sung prayers or joyful ones like the *Jubilate* above.

Personally, I think that we all need one-to-one conversations with God too. Acknowledging our failures and seeking forgiveness is a serious business. The world is full of troubles and a place of incomprehensible conflict. Our faith tells us that we must put our trust in God who has a purpose for everything but this can be hard and at times, a severe test for us to understand, and we need time for quiet contemplation.

Alongside the prayer, the Praise part of our act of worship should always be completely joyful. The world is a wonderful place and we should celebrate it and thank God for it. There are still many people in it who strive for the common good in spite of the greed and hatred of others. When we hear of the dreadful things happening around the world we must be so grateful that we are lucky enough to live where we do. Who can look out across our beautiful valley and not feel thankful for the peace and tranquillity we enjoy?

We are told that singing is good for us and it certainly raises the spirits when we sing something like *'Oh Lord my God! When I in awesome wonder, consider all the works Thy hand has made'*. This joyful hymn of praise to God cannot fail to transport us to *'lofty mountain grandeur'* and *'glades where birds sing sweetly in the trees'*, making us thankful that we can picture ourselves there. When the choir and other brave souls put in a descant as we *'Sing Hosanna'* to *'The King of Kings'* we can be physically energised so that we are uplifted and sound and feel joyful.

This month we shall be celebrating the harvest following a wonderful summer. Once again, we shall sing about ploughing the fields and scattering *'the good seed on the land'*.

When we come together to remember all *'good gifts around us'* and the harvest time, let us remember as we sing this hymn once again, to do it loudly and joyfully to say, *'Thank the Lord, O thank the Lord, for all His love'*.

Services for October 2018

Services in the parishes of Clifton, The Shelsleys and Lower Sapey (Harpley) October 2018			
<i>Tuesday 2nd</i>	9.00am	<i>Morning Prayer</i>	<i>All Saints, Shelsley Beauchamp</i>
<i>Wednesday 3rd</i>	10.00am	<i>Pushchair Praise</i>	<i>St Kenelm, Clifton</i>
Sunday 7th October Trinity 19	10.30am	Morning Prayer	St Kenelm, Clifton
	10.30am	Morning Prayer	St Bartholomew, Harpley
	10.30am	Holy Communion	All Saints, Shelsley Beauchamp
<i>Tuesday 9th</i>	9.00am	<i>Morning Prayer</i>	<i>St Kenelm, Clifton</i>
Sunday 14th October Trinity 20	10.30am	Methodist Service	St Bartholomew, Harpley
	6.00pm	Harvest Service and Supper	St Kenelm, Clifton
	6.30pm	Evensong	St Andrew, Shelsley Walsh
<i>Tuesday 16th</i>	9.00am	<i>Morning Prayer</i>	<i>St Bartholomew, Harpley</i>
<i>Wednesday 17th</i>	7.30pm	<i>Time for Time Out</i>	<i>St Kenelm, Clifton</i>
Sunday 21st October Trinity 21	8.00am	Holy Communion	St Kenelm, Clifton
	10.30am	COME Service	St Kenelm, Clifton
	3.00pm	Harvest Service and Tea	St Bartholomew, Harpley
	5.00pm	Harvest Service and Supper	All Saints, Shelsley Beauchamp
<i>Monday 22nd</i>	9.00am	<i>Morning Prayer</i>	<i>St Kenelm, Clifton</i>
<i>Tuesday 23rd</i>	9.00am	<i>Morning Prayer</i>	<i>St Andrew, Shelsley Walsh</i>
Sunday 28th October Last Sunday after Trinity	10.30am	Circle Service	St Bartholomew, Harpley
	10.30am	Quiet Reflection	All Saints, Shelsley Beauchamp
	6.30pm	Evensong	St Kenelm, Clifton
Contact Details:			
<p>Revd Canon David Sherwin (Team Rector & Rural Dean) Tel: 01886 888664 Email: davidwin56@aol.com</p> <p>Revd Anne Potter (Team Vicar) Tel: 01886 832355 Email: revannepotter@gmail.com</p> <p>Revd Becky Elliott (Curate) Tel: 01886 812451 Email: revrebeccaelliott@btinternet.com</p> <p>Revd Jen Denniston (Curate) Tel: 01886 853280 Email: jendenniston@gmail.com</p> <p>Churchwardens Clifton: Barbara Seeley 01886 812763 and Alana Cooper 01886 812520</p> <p>Churchwarden Lower Sapey: Candy Connolly 01886 853248</p> <p>Churchwarden The Shelsleys: Jane Froggatt 01886 812215</p> <p>Parish Email: lizedwards69@aol.com Website: www.achurchnearyou.com</p>			

CALENDAR OF EVENTS

October

- 4 Clifton Parish Council meeting, Clifton VH 7.40pm
- 6 Coffee morning, Marie & Eddie Thompson, 26 Village, Clifton 10am-12noon
- 9 Clifton WI: '*Life & Times of a Jester*' with Robert Pugh VH 7.30pm
- 11 Teme Valley Wildlife Group: '*Aristocrats of the Air*' with Keith Offord 7.30pm
- 14 Teme Valley Market, Talbot Hotel, Knightwick 10.30am-1.30pm
- 20 Rural Reels film: *The Greatest Showman* Clifton VH 7pm
- 20 Military Wives Choir, Chantry School, Martley 7pm
- 23 Churches Together in the Teme Valley talk, Shelsley VH
- 27 Friends of St Kenelm's Church lecture: '*Owain Glyndwr at Woodbury Hill – Fact or Fiction?*' with Heather Rendall. St Kenelm's, Clifton 7.15pm

November

- 1 Clifton Parish Council meeting, Clifton VH 7.40pm
- 4 Service to celebrate the memory of loved ones, St Kenelm's, 3.00pm
- 6 Churches Together in the Teme Valley talk, Shelsley VH
- 10 Clifton Bowling Club: Garage Sale & Coffee Morning VH 10am-12noon
- 11 Teme Valley Market, Talbot Hotel, Knightwick 10.30am-1.30pm
- 13 Shelsleys' PC meeting, Shelsleys VH, 7pm
- 13 Clifton WI Annual Meeting, VH 7.30pm
- 17 *Recovered* charity gig for prostate cancer, Clifton VH, 7pm
- 20 Churches Together in the Teme Valley talk, Shelsley VH
- 23 Christmas Bingo: 1st Clifton Guides, Great Witley VH, 7:30pm
- 24 Concert with *Vocal Score* and puddings, Clifton VH
- 24 Christmas Fayre: Nora Parsons Centre, 2-4.30pm

December

- 1 Annual Big Sing - a celebration of carols and canapes, St Kenelm's church, Clifton
- 2 Christmas Fayre: Clifton Girl Guides, Brownies & Rainbows, Clifton VH, 10am-1pm
- 8 Rural Reels film: *Mamma Mia! Her We Go Again* Clifton VH 7pm
- 11 Clifton WI: *How Good are your Taste Buds?* VH 7.30pm



1. Noverton Farm at Stanford Bridge was the scene of a charity line dance evening on 15th September in aid of St Mary's Church Stanford with Orleton. Organised by David and Michelle Evington, the event featured country and western stars The Hoedown Band, with the bar kindly provided by Tim Lawson's Magic Bars.
2. Belinda and Mark Skipp
3. David, Michelle and Livvy Evington and family
4. Emma Carpenter and Martin Schellenberg

Your Local Agent since 1898

- ✔ Sale of low to high value residential property
- ✔ Expert advice given on values
- ✔ High quality marketing carried out on all properties
- ✔ Use of several websites to include Rightmove & Primelocation
- ✔ Free "no obligation" marketing appraisals
- ✔ Letting of all types of residential property
- ✔ Full Management or Let only service provided
- ✔ Sale of Agricultural, Commercial & Development property

For a more extensive range of our services visit www.gherbertbanks.co.uk



T. 01299 896 968 ghb@gherbertbanks.co.uk
F. 01299 896 981 www.gherbertbanks.co.uk
The Estate Office Hill House Great Witley Nr Worcester WR6 6JB

Partners
David G F Banks FRICS FAAV
Robert Parry FRICS FAAV
Richard G F Banks MRICS

Associate Partner &
Head of Residential Agency
Tim Gaston BA

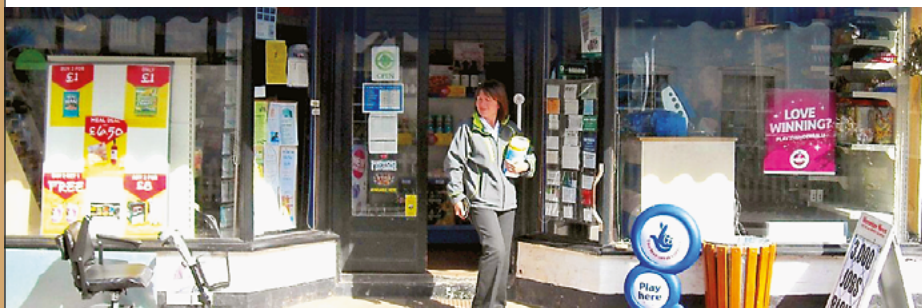


G Herbert Banks LLP is a Limited Liability Partnership.
Registered in England & Wales.
Registered Number OC344076. Regulated by RICS.

The Village Stores

27 THE VILLAGE, CLIFTON-UPON-TEME WR6 6EN

01886 812303



Open 7am-7pm Mon-Fri 7am-6pm Saturday 9am-12 noon Sunday

Contributions for the next (November) edition by Friday 12th October 2018 please, to editortemetriangle@gmail.com

Printed by Orphans Press of Leominster Tel: 01568 612460