

October 2017

# Teme TRIANGLE

Clifton upon Teme • The Shelsleys • Lower Sapey



*Nigel Hedcock at Lands End*

---

## In this edition

---

- ✿ **Local Grandad completes epic cycle challenge**
  - ✿ **Mandalay School for the Deaf Fundraising Concert**
  - ✿ **The White Pheasant – have you spotted it yet?**
  - ✿ **Local talks and events**
  - ✿ **And all your regular Parish news**
- 

[www.temetriangle.net](http://www.temetriangle.net)

Free to Residents



***'The last of the stunning, intense summer sunsets  
on Clee Hill, before the arrival of Autumn'***

- EDITOR Louise Hutton:** editortemetriangle@gmail.com
- SHELSLEYS NEWS:** Judie Welsh
- WEBSITE/CLIFTON NEWS:** Jerry Johns: 01886 812 304  
crown.house@polperropress.co.uk
- ADVERTISING/SPONSORSHIP:** Andrew Brazier 01886 887 898  
teme.triangle@thebraziers.co.uk
- LOWER SAPEY NEWS:** Marion West 01886 853 249  
marionjeanwest@googlemail.com

**If you or your organisation would like to sponsor Teme Triangle please contact Andrew Brazier. The cost of TT is £7 per household per year. Donations are encouraged, to Alden's Farm, Barbers Lane, Martley, Worcester WR6 6QD (cheques made payable to Teme Triangle Community Magazine)**

Opinions expressed in this publication are not necessarily those of the editorial team. We are not responsible for goods and services advertised. Your contributions may be altered or edited at the discretion of the editor of the month, and the editorial team.

**Our front cover picture shows:**

Grandad (Nigel Hedgcock) after finishing his Lands End to John O'Groat's cycle ride in support of Clifton Primary School.

**WELCOME to the October 2017 edition of Teme Triangle.** Long, lazy summer days seem a long time ago now, although I heard on the radio today that we are due to have a mini heatwave to conclude September, so we'll see if that actually happens!

Despite the showers though, I do love this time of year – Autumn is definitely in the air and you can see the changes starting across the land. By the end of this month we will have beautiful colours all around in the trees and gardens and hopefully, some crisp, bright days to go with it.

The magazine this month features feedback from some fabulous fundraising events, as well as lots more interesting dates for the diary, including, dare I mention it....the first signs of Christmas! Happy October!

### **HOORAY!! WELL DONE DAD YOU DID IT!!**

As you are probably aware, Grandad (Nigel Hedgcock) of Dexta has now completed his mean achievement of cycling from Lands End to John O'Groats. He travelled down to Lands End on Saturday 19th August and started his journey on the Sunday. He meandered his way up country with evening stop off's at St. Austell, Exeter, Wells, Hereford, Shrewsbury, Bolton, Kendall, Gretna, Hamilton, Blairgowrie, Grantown-on-Spey, Dornoch, and Bettyhill. He completed the ride on Saturday 2nd of September, taking just 14 days.



During this time he covered some 1018 miles. In the early days Dartmoor was a challenge with its steep hills often used in training for athletes in the UK. Later on the ride the Cairngorns in Scotland were also quite challenging with one climb of a 20% gradient covering approx 5 miles. To put this into perspective, Ankerdine Hill from the Talbot at Knightwick is approx a 17% gradient and covers approx 1/2 mile.

When Nigel decided to do this he wanted to help with something he knows his daughter Charlotte is very passionate about, which is assisting the Clifton Primary School to raise funds for projects as required. As you are probably aware, the big fund raising project at the moment is to make improvements to remove and replace tired play area equipment. The current equipment is wooden and coming to the end of its life. Ideally the school would like to replace this with a longer life span, which is more enduring and encourage a range of play to suit all ages.

I am pleased to announce that we are almost at the £1,000 mark with the help and support of villager donations and local business support. Initially Clifton Primary School PTA have successfully completed a number of fundraisers raising in excess of £2,000 which has put them well on the route to replace this much needed equipment. The style of equipment in mind is the type that can be used by all ages and is likely to be similar to the equipment in Great Witley village, with activity stations to work different parts of the body. An amount of groundworks will be required for this equipment to be fitted, which would also be fabulous to fund as part of this project. The target of funds required are in the region of £12,000 to £15,000 for which some lottery funding may be available. The school hopes to encourage the children to use the equipment as part of a normal daily routine both at playtime and during physical education sessions.

Please can we kindly ask that you dig deep in support of this fund raising effort. We have had quite a lot of support from local media with several interviews on the radio, and write ups in the evening news and many local parish magazines. We are happy for you to share this information with family members and local businesses to help us in our plight to get closer to our target. If you would like to make a donation this can either be sent to the school office (ideally as cash) in an envelope marked 'Lands End to John O'Groats' or alternatively perhaps you might like to make an electronic payment to bank account 2107 1768 sort code 30 98 52.

Both Nigel, Dexta, Charlotte and Clifton Upon Teme Primary school & PTA would be incredibly grateful if you would support this project by digging deep and sponsoring Nigel for his efforts. For any more information please call Charlotte on 07496 394731 or charliemerrick1981@icloud.com for more information & ways to sponsor.

As we are all sure you can appreciate, Nigel has put much time and effort into this task and hopes that it will raise some good funds to make the much needed improvements which the children will greatly benefit from, both now and in the years to come.

## **FUNDRAISING CONCERT FOR THE MANDALAY SCHOOL FOR THE DEAF**

Great Witley's magnificent Baroque Church was the perfect venue on Saturday 2nd September, for a fundraising concert in aid of the charity, 'Mandalay School for the Deaf'. Thanks to donations and ticket sales, the occasion raised over £7,500 for the charity. It was also held to celebrate the life and work of the charity's founder, David Blakeway-Smith MBE who, until his death in December 2016, lived in Pensax Common. He had established the charity in May 2015 in memory of his late wife, Sandy, who had started the school with two pupils in 1962.

Seven Choral Scholars from the world-renown choir of St John's College, Cambridge, enthralled the packed audience by singing a repertoire of music, ranging from early sixteenth century to contemporary, close-harmony arrangements.

The charity's chairman, Robin Youngs, hosted the event and The Venerable Robert Jones, Archdeacon of Worcester, a family friend, gave the audience a personal and moving insight into the lives of the late Sandy and David Blakeway-Smith.

The concert was sponsored by Ballard Dale Syree Watson chartered accountants. The drinks were sponsored by MFG Solicitors and provided by Addison Wines. Creative Folks designed the most impressive programme and pre-Concert suppers were provided by The Garden Tea Rooms, near to the church.



The organisers wish to express their thanks and gratitude to all those who helped in any way to make the occasion such an enjoyable success.

Anne Dearle

## THE WHITE PHEASANT

The White Pheasant – Stanford Bridge's very own pop-up pub! What is a 'pop-up pub' you may ask?

The pop-up phenomenon has been taking London by storm whether it's a pop-up pub, restaurant or retail shop, it is a way of people setting up a business without the commitment of opening every hour of every day. Instead you can decide when and how you will open.



The White Pheasant has been set up in the cellar of Orleton Court Farm and is currently open on the first Friday, Saturday and Sunday of every month. Fridays we have live music with Saturdays and Sundays being open as a pop-up pub.

We know a thing or two about both hops and hospitality. As well as running a busy B&B (so it's in fact a pub with rooms!), we grow hops and cider apples from our farm.

## NEIL SPROSON opticians

52 Barbours Road, Worcester WR1 1JA

*Professional Eye Care  
Exceptional Eye Wear*

Contact Lens Specialists  
Spectacles and Eyecare. Appointments  
Please call at Park

Tel: 0185 211111

[www.nixsprosontheoptician.co.uk](http://www.nixsprosontheoptician.co.uk)

## SEASONED HARDWOOD FIREWOOD

CUT & SPLIT TO REQUIRED SIZE

Delivered in 1.2 metre bags with crane vehicle

**NO STACKING -**

**NO MESS -**

**NO PROBLEMS**

**Contact David 07866 441154**



## REDCABIN COMPUTERS

Friendly and efficient service for your home  
&

Business computer system

New & used computers

Upgrades

Software

Hardware

Wired & Wireless Networking

Broadband help and setup

01885 483 839

01547 530 271

07973 358 124

[sales@redcabin.net](mailto:sales@redcabin.net)

## A WOMAN'S TOUCH!



LADY DECORATORS

PAINTING, WALLPAPERING  
TILING (WALLS & FLOORS)  
INTERIOR DESIGN & ADVICE

CLAIRE LENNARD

01886 889099 - 07710 469427  
THE OAST HOUSE, MARTLEY, WR6 6QB

## SOFT FURNISHINGS



by Tracey Birks

**Tel: 01886 812583**

Bespoke Handmade Curtains, Blinds, and Roller  
Blinds designed for you and your home.

Measuring and Fitting Service Included.

Handmade lampshades made to order  
in your choice of fabric.



## MINDFULNESS & MEDITATION

Short courses introducing beginners to the  
meaning and practice of mindfulness &  
mediation. For more information

Contact Nicky: [localyoga@aol.com](mailto:localyoga@aol.com)  
07749 176 091



# A.M. JONES

## Harpley Works Clifton-on-Teme

- MOT Repairs
- Servicing
- Accident Repairs
- Tyres
- Batteries
- Exhausts

**Tel/Fax: 01886 853 530**

**Mobile: 07970000881**



## WORCESTERSHIRE WILLS

Est. 2013  
Clare Burden

MEMBER OF THE INSTITUTE OF  
PROFESSIONAL WILL WRITERS  
SPECIALISING IN WILL DRAFTING AND  
POWERS OF ATTORNEY  
APPROACHABLE AND FRIENDLY  
COMPETITIVE RATES  
FULLY CRB CHECKED

HOME VISITS AND EVENINGS IF REQUIRED

Practising as a successful family lawyer for 8 years until taking time off to have a family, Clare has now set up her own company providing private client services.

To arrange a friendly and confidential consultation,  
Contact Clare Burden

**T. 01299 879826**  
**M. 07855 350245**

**E. [clare@worcestershireswills.com](mailto:clare@worcestershireswills.com)**  
**[worcestershireswills.com](http://worcestershireswills.com)**

## Professional Dog Walking & PetCare Services.



[www.petsadventures.com](http://www.petsadventures.com)

Contact Ruth on: 07736151130 or  
email: [ruth@petsadventures.com](mailto:ruth@petsadventures.com)

We are delighted to offer the following  
services in the WR6 area:

- 🐕 Professional Dog Walking
- 🐕 Dog Home Boarding
- 🐕 Doggy Daycare
- 🐕 Pet Companion & Home Visits
- 🐕 Pet Taxi Service
- 🐕 Chicken & Small Animal Boarding

01886



## A. H. CALDICOTT & SONS

### Funeral Directors

15 MARKET STREET,  
TENBURY WELLS, WORCESTERSHIRE  
TELEPHONE: 01584 810281  
FAX: 01584 811420

*A family  
run business  
established 1919*

*Burials  
Cremations  
Chapel of Rest*



- Woodburning & Multifuel Stoves
- Stove Spares & Repairs
- Glass, Ropes, Bricks, Baffles, Cleaners
- Chimney Liner Kits & Flue Pipes
- Kiln Dried Logs, Kindling and Firelighters

**01886 812452**  
**[www.is-stoves.co.uk](http://www.is-stoves.co.uk)**

Showroom & Online Shop

Steps Farm  
Clifton Upon Teme  
Worcester  
WR6 6EN

The White Pheasant is proud to stock locally sourced craft ciders and beers, many of which are produced from our own harvest. The house beer is not so local, but we are very proud to supply Fuggle hops to the award winning 'Timothy Taylors', the four time champion beer of Britain, and Madonna's favourite pint - so you'll be in good company!

The cellar was traditionally a cider store and made up of a 30ft vaulted first room and then a back room where the bar is situated which opens out onto the river side decking. During the renovation of the cellar, the flag stone and laid brick floor was removed and re-laid, the walls sandblasted and all three generations of homebrew (that obviously did not cut the mustard!) were safely disposed of!

The vaulted cellar is the perfect setting for this pop-up pub, both aesthetically and acoustically! With the stunning backdrop of the house, the surrounding fields of hops and now with the outside decking area overlooking the river - you could be forgiven for forgetting where you are, except for the typical English weather at this time of year!

The aim is to only open the pop-up pub monthly and we have set it up as a business. Whilst currently it is partly a hobby, we do plan to open it for private parties. So far we have supported a huge array of local talent including Remi Harris, Polly Edwards and Kringo Blue, Oakley Marsh and Millie Hinton and Lost Tiger to the Wild. We have some great acts planned for the future, including Big Sister and Dan Greenaway.

Future events are:

- October 6th, Dan Greenaway
- October 7th and 8th, pop-up pub night
- November 3rd, Toby Charles
- November 4th, pop-up pub night
- December 1st, Big Sister
- December 2nd, pop-up pub night

Opening times: Fridays 5pm till midnight, Saturdays 12 noon till midnight, Sundays 12 noon till 8pm.

To keep updated with future events, please like our Facebook page 'The White Pheasant WR6'.

Like any popular pub and venue, the secret to our success is our laid back attitude - kids, dogs and all ages are welcome. What's not to love about award winning, tasty craft ales, beers and fine wines?

Please remember, no invite is needed, it's here for everyone!



## The Arts Society Teme Valley presents:

“The Silver Thread: Silver Filigree and Traditional Arts in Kosovo”  
An illustrated lecture by a knowledgeable enthusiast.

Date: Wednesday 20th October, 2.15pm  
Venue: Ludlow Assembly Rooms  
Visitors welcome. £8.

## Charity Christmas Card Sale

Buy cards from major and local charities  
Refreshments available

Date: Tuesday 17th October  
Venue: Abberley Village Hall

### **NEW INN GOODBYE'S**

After 8 years of being The New Inn landlord's, David and Sheilagh are leaving to head South to sunny Devon. We wish them all the best in their future adventures.

### **CLIFTON HOME GROUP REVIVAL**

St Kenelm's has always had a strong history of Home Group meetings, but just recently it has not always been possible to hold them. Now that is changing and we are having a REVIVAL.

The meetings will be held at The Rectory in Clifton and they will offer an opportunity to explore and nurture faith in an easy and informal way.

The next meetings will be on: Wednesday 11th October 7.30pm at the Rectory.  
Wednesday 8th November 7.30pm at the Rectory

For further details contact Becky at The Rectory.  
Tel: 01886 812 451.  
Email: [revrebeccaelliott@btinternet.com](mailto:revrebeccaelliott@btinternet.com).

# JEREMY MASSEY

## Qualified Electrician



Registered  
Electrician  
- BS7671

- ✓ Household Electrical work
- ✓ Fast, Reliable & Friendly
- ✓ Very high standards met
- ✓ Inspection & Testing

Contact: 01886 888493

## West Wind Counselling



Sarah Jeffery MBACP Sapey Common Worcs WR6

For help and support  
with emotional pain or distress  
including:

- depression, stress, anger or anxiety
- bereavement, loss, setbacks, grief
- low confidence or self-esteem
- relationship difficulties or other troubles

T: 07432 078087

E: [westwindcounselling@gmail.com](mailto:westwindcounselling@gmail.com)

W: [www.west-wind-counselling.co.uk](http://www.west-wind-counselling.co.uk)

Please call or email me for  
a first confidential discussion.

I look forward to hearing from you.

*"It was such a relief to find someone to talk to, who understands and can help me to find my way. I would recommend counselling with Sarah to anyone who is struggling to cope."* (Client RP)



Gareth Vaughan Counselling  
**Bereavement – Depression – Anxiety**  
Areley Kings – Astley Cross  
07544 518276  
[www.gareth-vaughan.co.uk](http://www.gareth-vaughan.co.uk)

**Yoga** is a unique way of combining physical movement and breath in ways that can help to reduce stress and increase wellbeing, while enhancing physical flexibility.

**Classes for adults of all ages:**  
Tuesday mornings, Tuesday evenings  
at Broadwas Village Hall, WR6 5NG

For more information or to book for  
**January 2017** please contact Zoe Herington:  
Email: [zedyoga.booking@gmail.com](mailto:zedyoga.booking@gmail.com)  
Tel: 07962 981456

## THE MANOR ARMS

### ABBERLEY

Open 12pm - 11pm Every Day  
Call 01299 890300



A beautifully refurbished traditional village pub with locally sourced fresh food and ales.

*Our Head Chef sources top quality local ingredients to create traditional dishes and exciting specials.*

*Overnight stays in our beautiful rooms, available this Autumn!*

*You and your guests can be sure of a warm welcome, we look forward to seeing you soon.*

*Free function room available for local clubs, meetings, special events and parties.*

The Manor Arms Inn, Abberley Village, Worcestershire WR6 6BN

[www.themanorarms.co.uk](http://www.themanorarms.co.uk)

Follow us on Facebook and Twitter for news and events.



The Manor Arms Inn Abberley



ManorArmsInn

# A. R. VERRY

PLUMBING AND HEATING

Commercial and domestic oil  
fired installations and servicing,  
including Agas and Rayburns

01886 853023

- T.V. •Video •Audio
- Electronic Repairs
- Microwave Ovens

**DAVE PARKER**

01885 410711

Mobile 07790 423158

*Prompt efficient service at competitive rates*

**Hilda Webb** BSc, QTS, AMBDA

MATHS TUITION - ALL LEVELS  
UP TO GCSE GRADE

SPECIALIST TUITION FOR  
DYSCALCULIA & DYSLEXIA

**01886 812223**

THE OLD SCHOOL, SHELSLEY BEAUCHAMP WR6 6RA

**C.L. GIBBS  
BUILDERS**

EXTENSIONS • ALTERATIONS  
PLASTERING • UPVC WINDOWS  
ROOFING • TILING • LANDSCAPING  
FASCIAS • GUTTERING • STONE WORK

For all types of building work call your local  
family builder for advice and free estimate

01886 812 450

07905 396 971



STOURPORT WHOLESALE CARPETS

SUPPLIERS OF DOMESTIC & CONTRACT FLOORING

**CARPET AT WHOLESALE PRICES**

LUXURY FLOORING FOR ALL AREAS

CARPETS SUPPLIED AND FITTED FROM TOP MANUFACTURERS

FITTING BY OUR OWN EXPERIENCED FITTERS

BANKRUPT STOCK AVAILABLE

COMPETITIVE PRICING WITH A PERSONAL TOUCH

SPECIALISTS IN STAIR RUNNERS AND RODS

FAST AND FRIENDLY SERVICE

FOR A FREE ESTIMATE WITHOUT OBLIGATION

PENSAX 01299 666400

**PHIL GRAY**

**Dairyman / Newsagent**

*National... Daily... Sunday & Local Papers*

*... Magazines... All Milk...*

*... Dairy Products... Eggs... Soft Drinks*

*... & Waters etc.*

*Let your Milkman do the Walking*

**Phone & Fax: 01584 881385**

*Blacksmith of Worcester*

Distinctive Wrought Ironworks

Bespoke garden furniture, gates, railings,  
firegrates/guards, curtain rails & gifts.

Architectural steelwork and restoration.

www.blacksmithofworcester.co.uk Tel: 07969 071847



## HUNTLANDS FARM BED & BREAKFAST AND UPHOLSTERY

[www.huntlandsfarm.co.uk](http://www.huntlandsfarm.co.uk)

Tel: 01886 821955 / 07828 286360

### OFFERS:

upholstery classes • upholstery commissions  
en suite b&cb accommodation • wedding venue  
all in an idyllic, rural setting on a working farm.  
And a self-catering, 6 bedroom farmhouse on an  
adjacent farm, [www.moorhallfarm.co.uk](http://www.moorhallfarm.co.uk)

*Your hosts, Lucy, a custom upholsterer and  
Stephen, a passionate cook, guarantee you a comfy  
stay with freshly prepared, local food to enjoy.*



**Partytastic**  
ENTERTAINMENT



Now covering the Teme Valley!

## Children's Party Entertainment

- Birthday • Christenings
- Weddings • Events

**01886 812421**

[www.PartytasticEntertainment.co.uk](http://www.PartytasticEntertainment.co.uk)

*Would you like some company,  
or know someone who does?*

## NORA PARSONS CENTRE, Wichenford

Open Mondays and Thursdays 10.00 until  
3.00pm, with a hot lunch served both days

If you enjoy socialising with others over a cup of coffee, or  
maybe a game of scrabble, or exercises for the over 60's,  
then come along. Transport can be arranged.

*Call us on 01886 888374, we would love to hear from you.*

## MARTLEY OSTEOPATHIC CLINIC

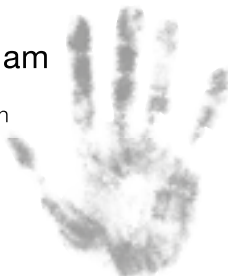
Osteopathic treatment  
for infants to adults  
including cranial techniques

**01886 889 002**

**Lynette Topham**

BSc (Hons) Ost  
Registered Osteopath

4a Hope House  
Farm Barns  
Martley WR6 6QF



Charity number: 1056248

MARTLEY & DISTRICT  
PRE-SCHOOL



**Monday-Friday**  
9am-3.15pm  
Ages 2-5



Forest School Sessions

**Full & Half Days Available**  
**Indoor & Outdoor Facilities Available**  
**ALSO !**



Graduate Leader

**Breakfast Club 8am-9am**  
**After School Club 3.15pm-6pm**  
Ages 2-13

Martley CoE Primary School  
Martley Worcester WR6 6TJ  
01886 889127



[www.martleypreschool.co.uk](http://www.martleypreschool.co.uk)

# Ombersley Family Dental Practice

MRS ANDY WRIGHT B.D.S. (EDIN)

A friendly private practice specializing in preventive dental care for all the family in a happy relaxed atmosphere.



**New patients welcome**

*Cosmetic treatments including tooth whitening*

*Sports gum-shields for all ages in various colours and designs*

*Same day emergency appointments*

*Large car park*

**Tel: 01905 621881**

**RACKS LANE, OMBERSLEY,  
NR DROITWICH, WORCS. WR9 0EN**

[www.ombersleyfamilydental.co.uk](http://www.ombersleyfamilydental.co.uk)



**K.B. CATERING**

**TAILOR MADE QUALITY MENUS  
FOR ALL YOUR CATERING NEEDS  
KIT BAMFORD**

Based at The Birche, Shelsley Beauchamp, a special venue with unique ambience for wedding ceremonies and other celebrations, as well as other outside catering requirements, please call me on:

**01886 812251 or 07801 699597 or 01905 345200**

**Email: [kitbamford@live.co.uk](mailto:kitbamford@live.co.uk)**

**SERVICED OFFICES AND WORKSHOPS  
AVAILABLE ON FLEXIBLE  
MONTHLY TERMS  
ALSO SMALL INDUSTRIAL UNITS**

[www.maylite.co.uk](http://www.maylite.co.uk)

Please contact Kate Shrubb on  
01886 888455 for more details



**Maylite Trading Estate, Martley WR6 6PQ**

## Tipton Hall Riding School

Riding lessons for all ages and abilities.

Hacking through wonderful countryside.

Horse Livery - small friendly yard.



**Roger Benbow**  
BHS(A) Reg. Instructor

Phone: 01885 496791  
mobile: 07790 358741  
[www.tiptonhallriding-school.com](http://www.tiptonhallriding-school.com)

Clifton-upon-Teme

## Early Years Centre



Offering quality childcare and pre-school education For 0-5 year olds

Open 7.30am - 6.00pm  
Experienced qualified staff  
Flexible hours  
Ofsted Registered  
Nursery Education Grants available

Also offering job opportunities for professional, committed staff looking for support in their career development.

For further details, please telephone the Manager at the Centre 01886 812380  
The Village, Clifton-upon-Teme, Worcester WR6 6DE.

## HAINES HEATING & PLUMBING

**A Friendly local service  
Call: 07534 700 932**

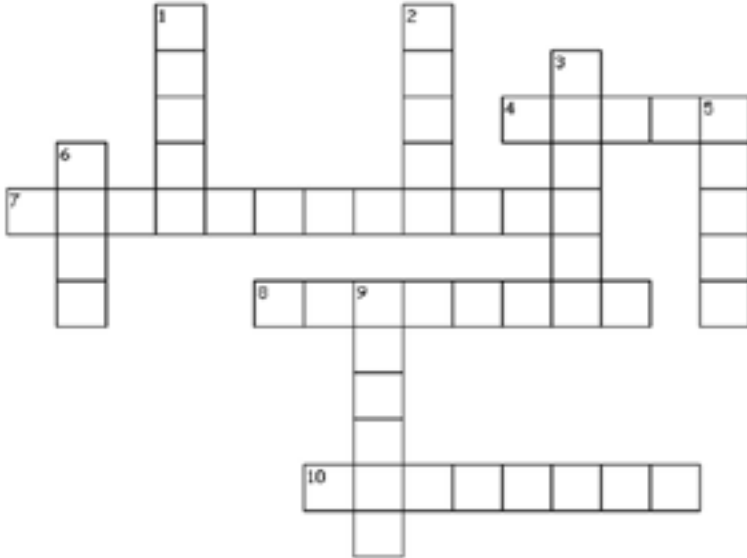
All aspects covered from dripping taps to full heating install:

Office: 01886 812639  
Email: [alex@haines4heating.co.uk](mailto:alex@haines4heating.co.uk)  
20 Saxon Close, Clifton upon Teme, WR6 6DL  
[www.ahainesheating.co.uk](http://www.ahainesheating.co.uk)



## HALLOWEEN FUN FOR THE CHILDREN

### HALLOWEEN CROSSWORD PUZZLE



#### Across

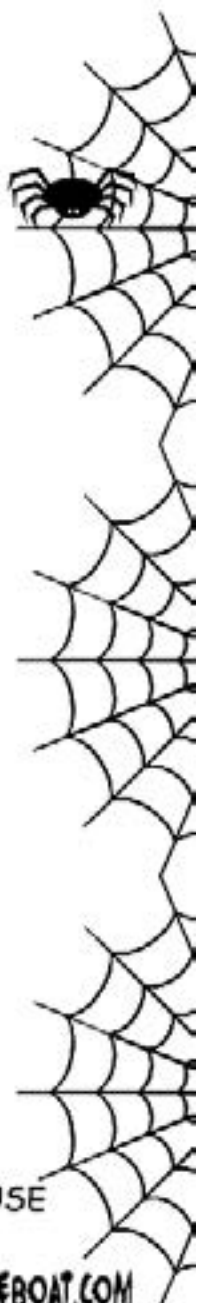
4. What does a witch ride?
7. Pumpkin with a glowing face
8. Kids dress up in \_\_\_\_\_
10. Howls at a full moon

#### Down

1. \_\_\_\_\_ or treat
2. What says 'Boo!'
3. Halloween color
5. Monster wrapped in bandages
6. Hide your face under a \_\_\_\_\_
9. It weaves a web

# HALLOWEEN WORDSEARCH

N E E W O L L A H R B R Q R N  
I Q H N R O C Y D N A C M G V  
E T T V W C O S T U M E A U R  
A Y X H F I C D X O M S R V E  
E F V I G M T C H M M P O S B  
Z Y M F Z I J C O R L O U P O  
S V M X E T R N H R B O N U T  
K S A A A H S F S Q H K K M C  
S T E E L T Q H B D B Y W P O  
A S R Y E T O Y E D F C W K B  
M T C R S R D T W S T L H I G  
O A S O R N N F B B C R Q N C  
A A H O A U A L O J S A I L R  
L G R C A G I Z C G Z Z R C E  
W N Q H H U K W W L Q F I Y K



GHOST	PUMPKIN	FRIGHT	COB WEBS
WITCH	MONSTER	HORROR	CANDYCORN
TRICK	COSTUME	SCREAM	HALLOWEEN
TREAT	SPOOKY	BOO	OCTOBER
CANDY	SCARY	MASKS	HAUNTED HOUSE

MOMSLIFEBOAT.COM

## CLIFTON GIRL GUIDES EVENTS

### **Coffee morning**

at the Guide BP hut in Clifton, Saturday 14th October  
10am til 12 noon

**Jumble, raffle tombola, books, bric-a-brac, cakes and general produce.**

### **Guiding Christmas Fayre**

At Clifton-On-Teme Village Hall, Sunday 3rd December  
10am til 1pm

**Table bookings welcome - £10 per table**  
**Please email [angiegriffiths@aol.com](mailto:angiegriffiths@aol.com) or call 07957 462 519 to book**

## TEME VALLEY TALKS...

Back by popular demand at Shelsley Village Hall, Churches together in the Teme Valley present an Autumn Series of talks covering the Challenges of Life, issues which face us all in our everyday lives.

The dates are 11th October (7-9pm), 25th October and the 8th November 2017. The first talk entitled "Up Close and Personal" will be led by Rt. Rev Dr John Inge (the Bishop of Worcester).

Tickets £5, to include supper. Due to licencing laws please bring your own wine or soft drink.

Tickets available from the Churches Together Group:  
Des Robson 01886 812 535; Jane Roberts - [janeroberts440@gmail.com](mailto:janeroberts440@gmail.com)  
Neil Higton 01886 812 229; Jill Smith 01886 853 311

### **WANTED - Female Personal Assistant**

(Sex Discrimination Act Section 7 (2) (b) (ii) Applies)

for 13 year old girl with profound learning disability near Great Witley.  
She is happy, physically able and responsive to simple, firm phrases.  
Job includes playing, walking, personal care including nappy-changing,  
patience, driver and fitness. £12 per hour.

Enhanced DBS Check required (*if update is needed, this can be paid*).

Contact: Rebecca O'Grady  
Tel: 07531 786 435 Email: [chezogrady@hotmail.com](mailto:chezogrady@hotmail.com)



## SHELSLEYS PARISH COUNCIL MINUTES

### Draft Abbreviated Minutes of The Shelsleys Parish Council Meeting held on September 12th 2017.

**Present:** Present: Mr Cassian Roberts, Mr J Stinton, Mrs C Warren and Mr William Sutherland.

**In Attendance:** County Councillor Dr Pollock, District Councillor Mrs Palethorpe and the Clerk.

**Apologies:** D Styles, K Metcalfe and D Bates.

**Declaration of Interest:** Councillor Stinton for Village Hall item 13.

**Minutes:** The minutes of July 11th 2017 were proposed.

**Public Question Time:** none. District Councillor's report and County Councillor's Report: These are available in full on the website.

**Broadband:** The Clerk has spoken to the Senior Project Manager Broadband & Connectivity Strategic Commissioning at WCC who reported that the majority of households within the Shelsleys will be able to receive Superfast Broadband by the end of 2018. However there are some postcodes not included in this roll out. It will be established which these are by using the WCC online tool and the information relayed back to WCC.

**Highways, Footpaths and Lengthsman:** The Lengthsman's worksheets for July and August were inspected and approved. The Lengthsman reported no immediate problems. He will shortly clean the gutters on the bridges, which will be treated with weed killer. He will also be asked to attend to the footbridge.

**B4203:** There has been one accident reported to which the police were called. The speed limit sign is still missing, believed to be in the hedge. Highways to be informed.

There were no updated reports from Highways.

#### **Planning:**

There were no current planning applications to discuss. 17/00349/HP Woodbury Old Farm.

Withdrawn.

MHDC decisions:

17/00520/HP Replacement garaging with new garage, workshop and ancillary living accommodation. Approved.

17/00813/FUL Proposed mobile home for holiday use with associated access and landscaping at WR6 6RJ. Approved.

#### **Clerk's report on urgent decisions:**

17/01137/GPDQ Notification of prior approval for the change of use of agricultural buildings to two dwellings and associated operational development. Parish Council recommended approval however the plans have subsequently been withdrawn. **Woodbury Quarry:** The trespassing in the quarry and the subsequent verbal abuse received by the owner and his family has increased. The owner has asked for support and advice from many local bodies including the police and MHDC. Councillor Palethorpe has spoken to the leader of the Council and Community Services Support who may be in a position to offer advice. Parking restrictions were again discussed but it was felt that enforcement would be a problem.

**Finance:** The following requests for payment were agreed.

Lengthman's invoice £384. HMRC PAYE £56

**Monies received:** VAT repayment up to 31st March 2017 £826.22.

**Correspondence and Consultations:** All items were either emailed to councilors or were available to view at the meeting. No comments on consultations were recorded.

It was agreed to invite St Richard's Hospice to address the Annual Meeting in May.

Village Hall Management Committee: The trees have been trimmed and it is hoped to improve the car park area. The coffee mornings have proved a success and the latest accounts were produced.

**Councillors' Reports and items for future agenda:** 2018 meeting dates. Budget.

**CALC:** Training details are circulated together with all CALC correspondence as per the Update received weekly.

The meeting concluded at 8.25pm. The date of the next meeting: November 7th at 7pm

To view the minutes and agenda online, go to the WCC website and look at The Shelsleys.

<http://e-services.worcestershire.gov.uk/myparish/>

Jan Speyer, Clerk 01886 812 444

**SERVICING & REPAIR**  
ALL TYPES OF  
**GARDEN MACHINERY**



**BRIAN BUTLER**  
Clifton-on-Teme  
07929 014804 Daytime  
01886 812538 Evening

**COLLECTION and DELIVERY**

**Nick**  
**Champion**

**Auctioneer**  
**Valuer**  
**Land &**  
**Estate**  
**Agent**

F N A E A , F N A V A

**Auction and Rural Property Specialist**  
providing professional, independent  
property marketing and acquisition  
throughout Worcestershire,  
Herefordshire and Shropshire.



16 Teme Street  
Tenbury Wells  
Worcestershire  
WR15 8BA

T: 01584 810555 • F: 01584 810888

E: [nick@nickchampion.co.uk](mailto:nick@nickchampion.co.uk)

[www.nickchampion.co.uk](http://www.nickchampion.co.uk)

**PC Troubles?**

- PC problems solved
- Broadband connection set-up
- Home network set-up
- Printer and camera problems solved
- Website design service
- Basic PC training at home



*For friendly and local advice and to  
book a free consultation contact*

**Bernadette Higgins** on 07813 302 504  
or e-mail: [apctrouble@gmail.com](mailto:apctrouble@gmail.com)

**LUXURY CATTERY**

Call Lesley on 01886 821154

- New luxury Cattery set in beautiful open countryside. Run by genuine cat lover.
- Fully Licensed and Insured.
- All chalets have heated bedrooms and spacious play runs.
- Special needs and diets catered for.



**Kitty's Cattery**

Coronation Cottage, Broadweas (Nr. Martley), Worcester, WR8 5WT  
[www.kittyscattery.co.uk](http://www.kittyscattery.co.uk) [kittyscattery@hotmail.co.uk](mailto:kittyscattery@hotmail.co.uk)

**TAYLORS**  
**CONSERVATORY**  
**CARE**

22 Saxon Close  
Clifton upon Teme  
Worcester WR6 6DL



Mobile: 07801 281821  
Tel: 01886 812424  
Fax: 01886 812954

**Sales • Service • Repair**

**SUPPLY • INSTALLATION • AFTER SALES CARE • RE-ROOFING**

*We supply and fit:*

Aluminium Windows and Doors • uPVC Windows and Doors  
Hardwood and Softwood Windows and Doors  
Conservatories in Hardwood / uPVC / Aluminium

PILKINGTON APPROVED INSTALLERS

Agents for Compton Garages & Alton Greenhouses

Please phone for Free Quotation • Fence Registration No. 18796



# RED KITE Pest Control



&  
**Wildlife Management**

*Combining Tradition and Innovation*

For all your local Pest Control requirements  
Flexible Contracts ~ Individual Treatments  
BPCA and NPTA Qualified

All **INSECT** Pests  
All **RODENT** Pests  
All **WILDLIFE** Pests

**Specialized Trapping service**  
**Pest Prevention and Proofing**  
**Cleansing, Decontamination, Disinfection**

**Free Advice**  
**Free no obligation Quotations**

Telephone **Andy Staples on:**  
**07977 044987 / 01886 832730**

# TVA

## TEME VALLEY ACCOUNTS

Bookkeeping VAT  
PAYE Sage Accounting  
Tax Returns Draft Accounts

Contact: Claire on  
Tel: 01584 881708 or 07731 010099  
Email: Claire.tva-accounts@outlook.com

*Party / Business / Reception / Function*

## CLIFTON VILLAGE HALL

Three meeting rooms (2 – 120 people)  
Modern, well equipped kitchen  
with crockery, glasses etc.  
Good parking in central location

**Bookings: 01886-812464 / 812238/  
812969 / 812335 or  
hallshire.com**



# FISHER GERMAN

**Fisher German (now incorporating Halls Midlands)  
provide a full range of professional services including  
rural property management, renewable energy, commercial,  
planning & building consultancy and property agency.**

For professional and confidential advice please call 01905 728444.



Anthony Champion  
07974 398854



Tom Dennes  
07587 033061



Christian Sanders  
07799 697791



Stuart Flint  
07501 720422

[fishergerman.co.uk](http://fishergerman.co.uk)

S H E L S L E Y

VILLAGE HALL  
FOR HIRE

Set in beautiful surroundings  
*(with french windows leading onto terrace)*

Close to the river and hillclimb

Well equipped kitchen • Bar available

Ideal for meetings, dances, parties etc.

VERY REASONABLE RATES

Contact for bookings

Carol 01886 812180  
carolsmith321@outlook.com



Make Pure Thyme your Time  
Reflexology, Massage,  
Aromatherapy, manicures  
and pedicures.

Treatments carried out in the beautiful  
Teme Valley setting of Pitlands Farm, Clif-  
ton-upon-Teme.

Please enquire about gift vouchers,  
home visits and pamper parties.

Julia Haywood

01886 812623/ 07964 176747

info@purethyme.co.uk

www.purethyme.co.uk



Follow us on Twitter and Facebook



Paul the Painter

Professional painter & decorator  
in Clifton-upon-Teme

Interior & exterior, from a single room to a whole house

Tel 01886 812168 / 07759 298754  
E-mail paulthepainter23@msn.com

BED &  
BREAKFAST

Accommodation at Frith Common  
in the scenic Teme Valley

Tel: 01584 881190  
marionmorris20@gmail.com  
www.temevalleybandb.co.uk



Physiotherapy for both  
women and men's health,  
looking holistically at the  
individual, advising on  
key health messages to  
help improve lifestyle and  
well being.

fionacarterphysio.co.uk  
Mobile 07712 032998  
Email fi.carter.pyf@gmail.com

ANDREW JELLEY  
OPTICIANS

18 Teme Street Tenbury Wells

01584 811445



www.andrewjelleyopticians.co.uk



*Park-up Clinic at  
Estate Country Feeds,  
Martley WR6 6PQ*

*Also new facilities for  
surgical procedures*

**Contact: Juliet Twinberrow**  
**Tel: 01886 821408 Mob: 07772 799754**  
**Email: info@housevet.co.uk**  
**www.housevet.co.uk**

**LIZ WHITTAKER**  
**Lady driver: Mercedes E-Class:**



**Airport/Seaport • Hotel Transfers • School Runs**  
**Business/Corporate • Long & Short Journeys**  
**7 seater available • Competitive Prices**

**07814 006179**

the **snug**

beauty & therapies

revitalise & relax at mill farm  
stanford bridge WR6 6SG

**01886 853296 • 07989 529215**

please call for an appointment

latest technology in non-surgical facelift, oxygen facials & glycopeels  
phone us to book a complimentary demo



**FUTURE  
EVENTS:**

**October 6th Dan Greenaway,  
October 7th and 8th pop up pub night**

**November 3rd November Toby Charles  
and November 4th pop up pub night**

**December 1st Big Sister and  
December 2nd pop up pub night**

**Opening times: Fridays 5pm till midnight,  
Saturdays 12noon till midnight**



Opening Times:  
Mon - Fri 0900 - 1800  
Saturday 0900 - 1700  
Sunday 0900 - 1300  
Telephone: 01886 853 516

Here for all your everyday needs: Anstey's  
cheeses, bread from Swifts Bakery, milk and  
cream from Bartonsham Farm and  
newspapers at the weekend, as well as all  
your household essentials!

**WILLOW & WELLS**  
ENGLAND

**INTERIOR DESIGN  
CURTAIN MAKING  
SOFT FURNISHINGS  
LUXURY GIFTS  
LADIES FASHION**

**MILL FARM, STANFORD BRIDGE**  
**01886 853336**  
**www.willowandwells.co.uk**  
**Tues to Sat 9.00 - 3.00pm**

**the  
den**  
CAFÉ BAR

A warm welcome and a glowing fire awaits you  
at The Den. Just perfect for a catch up with  
friends over coffee and cake or a more relaxed  
lunch with a glass of something nice!

We can host your special celebration too -  
bookings by arrangement.

Opening Times:

Mon to Sat 8.30am-4pm  
Sunday 9am-2pm

Telephone: 01886 853 800

## CLIFTON PARISH COUNCIL MINUTES

As the latest minutes available from Clifton Parish Council date back to July, we have not included them in this edition. Both are available online, follow the link from our website [www.temetriangle.net](http://www.temetriangle.net).

## TEME VALLEY WILDLIFE



In mid-August I had my best-ever sighting of fallow deer whilst out walking. I was on a route through the western fringe of the Wyre Forest, taking in a visit to Worcestershire Wildlife Trust's Betts Reserve, which is good for birds and butterflies, superb views of the Clees and Far Forest shop, which is good for ice-creams.

Twice, a small group of grazing deer, some 6-9 animals, came into view on open grassland. They did not appear to be afraid, but watched us carefully for a few minutes before moving off into nearby shade. They were in smart summer coats of rich brown with white spots, each sporting a white rump patch outlined by a horseshoe of black, and both groups were made up of does and fawns. The deer's ears struck me as quite comical, sticking out of the top of their heads at a very oblique angle, like the aerial on an old-fashioned black-and-white television-set!

They also showed comic-strip agility in making their way round wooden rail fences and complicated-looking electric tape which kept in horses but clearly provided no obstacle whatever to wild creatures. The fawns would have been born earlier in the year, in June, when tall grass and foliage would have given them safe cover. By six months of age the fawn bucks develop the first signs of antler growth and they then leave the doe and fawn group and in their second year of life go to join the mature bucks.

No bucks were in sight on the walk, but for August this would be usual, as they spend the summer apart from the does and fawns, eating well during a time of plenty, building up their reserves for the winter and fortifying themselves for the rutting season, which starts at the beginning of October. About now the bucks will begin to parade about their territories, thrashing bushes and trees with their antlers to leave scent marks to advertise their presence. The scent is produced by glands beneath the corner of the eye and is rubbed onto branches by the antlers. The bucks then scrape the ground and herd the does together, fighting off rivals with clashing antlers, before mating to produce next year's fawns.

In summer deer eat grasses and herbs in woodland rides and clearings and in open pasture. They also, to the annoyance of foresters, eat tree foliage. In autumn they move into woodland to find acorns, beech mast and sweet and horse chestnuts. If heather is available it supplements their winter diet.

Even if you do not see deer when you are out and about you can be aware of their presence by noticing where twigs and leaves have been cropped off trees in a straight line about two metres above the ground. Or, in muddy ground, you might see cloven hoofmarks or spot glossy black cylindrical pellets, which are the deer droppings.

Fallow deer were brought to Britain by the Normans, but are thought to have lived here thousands of years ago, before dying out at the time of the last Ice Age. A unique variety of long-coated fallow deer lives in the Mortimer Forest, and nowhere else in the world, so they can be quite special in our neck of the woods.

The next meeting of the Teme Valley Wildlife Group is on Thursday October 12th 2017 when we welcome Trevor Duke who will be talking about lichens. The meeting is at 7:30pm in Rochford Village Hall and as always it is just £2 on the door, where everybody is most welcome.

For up-to-date information on what wildlife is being seen in the area, or to give us your sightings, visit our Facebook page. The group normally holds meetings on the second Thursday of the month. All are welcome.

Contact Tel: 01584 881 397 or email [zeunie@hotmail.com](mailto:zeunie@hotmail.com).

# J & S Trade Supplies



Haven Nurseries  
Bank Road  
Little Witley  
Nr Worcester  
WR6 6LR  
Tel: 07966-804007  
Tel/Fax: 01886-888024  
VAT No: 824 6536 21  
*Partners: JT Bull & SR Bull*

## Suppliers and Installers of:

Aluminium Windows  
Aluminium Bi-Folding Doors  
Hardwood and Softwood Bespoke Timber Windows,  
Doors and Conservatories including  
Grade I and Grade II listed  
Secondary Glazing and Replacement Sealed Glass Units  
UPVC Windows, Doors and Conservatories  
Garage Doors, Fascia and Soffits  
*We now also specialise in small building projects including  
carpentry and joinery*

**PLEASE CALL FOR A FREE NO  
OBLIGATION QUOTATION**

## BILLS GARDEN GATES AND TIMBER PRODUCTS

- Garden Furniture
- Log Stores
- Chicken Runs
- Aviaries
- Storage
- Decking
- Fences
- Your Choice



...and more made to order locally from FSC treated or untreated timber. Bespoke and renovations also undertaken

For more information contact Bill

- Tel: 07580 274999
- Great Witley 01299 896681
- Website: [www.billsgardengates.co.uk](http://www.billsgardengates.co.uk)
- Email: [billsgardengates@btinternet.com](mailto:billsgardengates@btinternet.com)



[www.facebook.com/billsgardengates](https://www.facebook.com/billsgardengates)

# COLIN GRIFFITHS

## GROUNDWORKS CONTRACTOR

MARTLEY, WORCESTERSHIRE

*"A Business  
built on  
a solid  
foundation"*

Main Sewer Connections  
Septic Tanks  
Foundations to D.P.C.  
Concrete & Tarmacing  
Site Clearance  
Foul & Storm Drainage etc.

*For all your  
private &  
industrial  
groundworks*

For a personal and efficient service  
please contact Colin on,

TEL. 01886 821283 MOB. 07836 772501

Providing High Quality  
**HomeCare**

Eclipse HomeCare  
making a difference

## Excellent Care from Local People



- We have a full range of hourly, daily & live in services
- Specialists in Dementia, MS & Alzheimer's care
- Longstanding teams of dedicated local caregivers
- Excellent reputation with Private Clients, Worcester County Council and CQC (Care Quality Commission)

Eclipse Homecare has been operating in this area for almost 10 years and is an Award winning local business. Speak to us today to find out more about how we can help.

[www.eclipsehomecare.co.uk](http://www.eclipsehomecare.co.uk)

Worcester 01905 641 070	Malvern 01684 869 432	Kidderminster 01562 535 420	Bromsgrove 01527 573 949	Teme Valley 01584 812 594
-------------------------------	-----------------------------	-----------------------------------	--------------------------------	---------------------------------



## LEE JAMES CARPENTRY & JOINERY

Qualified and experienced in all aspects of carpentry

- Kitchens supplied and fitted
- Roofing
- 1" and 2" Fix
- Renovations - old & new
- Oak timber frames
- Plastic fascia & soffits
- Loft conversions
- Doors & windows

**Quality and Satisfaction Guaranteed**

For free quotes, competitive prices and a professional service phone:

(01886) 821151  
07779 073870

## Chimney Sweep

**Andy Johnson**

- Certificate issued
- Weekend/Evening sweeps available
- Traditional brush/Power sweep



**01886 821933 / 07798 790913**



## adrianmackwell AUCTIONEER & VALUER

m 07554 004028 t 01886 812575 e amackwell@gmail.com

Custard Cottage, Clifton on Teme, Worcestershire, WR6 6EW

Specialist valuations of Antiques,  
Fine Art and House contents for:

Probate/Inheritance tax,  
Sale by Auction, Marital Separation  
Sales by auction arranged  
House clearance service available

[www.adrianmackwell.com](http://www.adrianmackwell.com)

PROBATE/INHERITANCE TAX

"Sympathetic and straightforward"

CLEARANCE  
"Thorough and efficient"

AUCTION

"Honest and approachable"

INSURANCE  
"Clarity and discretion"

[www.adrianmackwell.com](http://www.adrianmackwell.com)

## LOCAL PILATES CLASSES EVERY DAY

including Whitbourne, Martley and  
Hanley Broadheath on Tuesday's

Please contact Sue Bratton for more  
details or to book a place 07974 343609  
or [sue-bratton@tiscali.co.uk](mailto:sue-bratton@tiscali.co.uk)



Beautiful, fragrant, locally grown  
floral arrangements for all occasions

[kate@shelsleyherbsflowers.co.uk](mailto:kate@shelsleyherbsflowers.co.uk)

01886 812184 07887 706147

### SERVICING OF

### AGA...

### RAYBURN...

### OIL FIRED STOVES...

### CENTRAL HEATING

### BOILERS

### MIKE TINGEY

OFTEC ASSESSED PROFESSIONAL  
SERVICE ENGINEER

Fully insured

Tel: 07974 983 133

Email: [mike.tingey@zen.co.uk](mailto:mike.tingey@zen.co.uk)

## **HOLY COMMUNION AT SHELSLEY BEAUCHAMP**

The pattern of services for the churches of 'The Shelsleys' has been under review and after discussion it was felt a regular service of Holy Communion at All Saints Church, Shelsley Beauchamp needed to be offered.

As the winter months draw in, the 8.00am service at Shelsley Walsh will be suspended in favour of a 10.30am Holy Communion at All Saints, Shelsley Beauchamp. These services will be held on the fourth Sunday of the month, the first being 22nd October 2017.

We do hope you can join us in the worship being offered. Everyone is welcome and we look forward to seeing you there.

God Bless,  
Rev Canon David Sherwin  
Team Rector Worcestershire West Rural Team

## **SHELSLEY VILLAGE HALL**

Just a reminder to all that Shelsley Village Hall hosts a coffee morning on the first Saturday of every month, 10am – 1pm. This is proving to be a very popular event.

Also, following on from the success of last year, there will be another Christmas Fayre, on Saturday 11th November, 10am – 1pm. Please put this date in your diary, to ensure another successful event.

The Village Hall is a great facility and is available to all those wishing to hire a spacious, comfortable and well-equipped venue for any occasion.

For general information and bookings, please contact Carol Smith on 01886 812 180.

# Church Matters

from Ruth Wilson

To everything there is a season and a time for every purpose under the heaven....a time to plant and a time to pluck up that which is planted. (Ecclesiastes Chapter 3 v 1-2)

We are blessed to live in the countryside around Clifton. The Malvern Hills changing colour and shape as clouds pass over them, sometimes crystal clear in the sunlight, other times hidden in clouds and rain. The River Teme flowing through the valley with the morning mists hanging on frosty sunny days. The trees and hedgerows changing colour to oranges and browns as the year progresses through autumn, others staying green, growing berries, providing shelter and food for birds.

The views across fields changing colour as the crops grow, while the year moves through the seasons. Fields in summer ripe with crops, now harvested, some once dominated with round bales, now stored to provide food and bedding for animals throughout the winter. Fields now cultivated and replanted for another season's growth some waiting for new growth in spring.

Flocks of sheep and herds of cattle in fields needing more care as the grass grows more slowly.

Help us to be thankful for the farmers and those who work throughout the year in all weathers producing the food so easily available in shops and supermarkets, for their stewardship of the land and husbandry of the animals.

Help us to remain aware of our surroundings and the beauty in the land and the people around us, thankful to God the Creator who has provided so much. O Lord, Our Lord, your greatness is seen in all the world!  
(Psalms 8 verse 1)

## **ANNUAL SALE OF JUMPERS**

**At Stanford Village Hall  
on Saturday 4th November 10am till noon**

From British Manufacturers, Lambswool, Cashmere etc.  
Good quality at Good Prices, also 2 boxes of special sale items.

Come and have a Coffee • Chat and Browse

## **LOWER SAPEY NEWS with Margaret Griffiths**

Here we are fast approaching Winter yet again and after a rather dismal Summer. Apparently this has been the 11th wettest Summer on record and I am sure most of the rain fell on us in the West. However, it seems to have produced abundant crops in my orchard and I hope this bodes well for the farmers' harvests. We should be grateful as well I suppose, that we are not in the path of the recent hurricanes, which must be a really terrifying experience. My real regret is that the cricket season will soon be over but hopefully, Worcestershire will achieve promotion. However, many a slip.....

On a really sunny day in early September we held our annual Big Breakfast in our Churchyard and made over £200 for St Bartholomew's Church. Liz and Steve Younge and their helpers are to be thanked and congratulated yet again for the hard work they put in to make this event a success. They would like to thank all their helpers and people who donated gifts and food.

Our Harvest Festival service is coming up, but this year the powers that be have been unable to hold it on our traditional last Sunday in October, so it will be on Sunday October 8th. The Methodists have kindly said they will organise it as we usually do and we are grateful for their help. Please bring a plate to share for the end of the service, when there will also be a hot drink. We ask ladies of the parish to decorate a window for the service and I am sure Dot will be in charge of this when she returns from her holiday in the magical Scilly Isles.

For other services this month, please see the list at the end of the magazine. These now include the Tuesday morning prayer service held once a month in each Church at 9am.

## **NOTICES**

The October Ladies Bible Group will be held on Tuesday October 10th at the home of Marion West. We are continuing our study of the Old Testament and the way it relates to modern times. All welcome.

Flowers for the Church will be dealt with by Candy Connolly after the Harvest Festival is over.

Cleaning is in the hands of Gay Sudbury.

The Mobile Library will call on Friday 20th October at 10.20 and 10.40am.

**Copy for the next (November) edition by Friday 10th October please.**

## CALENDAR

### October

- 7 Shelsleys' Village Hall coffee morning, 10am – 1pm
- 8 Harvest Service and Supper, St. Kenelm Clifton, 6pm
- 11 Clifton Home Group Revival, The Rectory, 7.30pm
- 11 Teme Valley Series of Talks, Shelsley Village Hall, 7-9pm
- 14 Clifton Guides Coffee morning, Clifton Guide hut, 10am – 12pm
- 14 Nora Parsons Day Centre, Afternoon Tea Party, 2.30 – 5pm
- 15 Harvest Service and Supper, All Saints Shelsley Beauchamp, 5pm
- 17 Charity Christmas Card Sale, Abberley Village Hall
- 20 The Arts Society Teme Valley, Ludlow Assembly Rooms, 2.15pm
- 25 Teme Valley Series of Talks, Shelsley Village Hall, 7-9pm

### November

- 4 Shelsleys' Village Hall coffee morning, 10am – 1pm
- 8 Clifton Home Group Revival, The Rectory, 7.30pm
- 8 Teme Valley Series of Talks, Shelsley Village Hall, 7-9pm
- 11 Shelsleys' Village Hall Christmas Fayre, 10am – 1pm

**Services in the parishes of Clifton, The Shelsleys and Lower Sapey (Harpley)**

**October 2017**

<b>Sunday 1st October</b> <b>Trinity 16</b>	10.00am	Morning Prayer	St Kenelm, Clifton
	10.30am	Morning Prayer	St Bartholomew, Harpley
	10.30am	Quiet Reflection	All Saints, Shelsley Beauchamp
<b>Tuesday 3rd</b>	9.00am	Morning Prayer	All Saints, Shelsley Beauchamp
<b>Wednesday 4th</b>	10.00am	Pushchair Praise	St Kenelm, Clifton
<b>Sunday 8th October</b> <b>Trinity 17</b>	10.30am	Methodist Harvest Service	St Bartholomew, Harpley
	6.00pm	Harvest Service and Supper	St Kenelm, Clifton
	6.30pm	Evensong	St Andrew, Shelsley Walsh
<b>Tuesday 10th</b>	9.00am	Morning Prayer	St Kenelm, Clifton
<b>Sunday 15th October</b> <b>Trinity 18</b>	8.00am	Holy Communion	St Kenelm, Clifton
	10.30am	COME Family Service	St Kenelm, Clifton
	5.00pm	Harvest Service and Supper	All Saints, Shelsley Beauchamp
<b>Tuesday 17th</b>	9.00am	Morning Prayer	St Bartholomew, Harpley
<b>Wednesday 18th</b>	7.30pm	Time for Time Out	St Kenelm, Clifton
<b>Sunday 22nd October</b> <b>Trinity 19</b>	10.30am	Holy Communion	All Saints, Shelsley Beauchamp
	10.30am	Circle Service	St Bartholomew, Harpley
	6.30pm	Evensong	St Kenelm, Clifton
<b>Monday 23rd</b>	9.00am	Morning Prayer	St Kenelm, Clifton
<b>Tuesday 24th</b>	9.00am	Morning Prayer	St Andrew, Shelsley Walsh
<b>Sunday 29th October</b> <b>Last After Trinity</b> <b>Bible Sunday</b>	10.30am	WWRT Joint Holy Communion Service	St Kenelm, Clifton
	3.00pm	Memorial Service	St Peter, Martley

**Contact Details:**

**Revd Canon David Sherwin** (Team Rector & Rural Dean) Tel: 01886 888664 Email: davidwin56@aol.com

**Revd Anne Potter** (Team Vicar) Tel: 01886 832355 Email: revanepotter@gmail.com

**Revd Becky Elliott** (Curate) Tel: 01886 812451 Email: revrebeccaelliott@btinternet.com

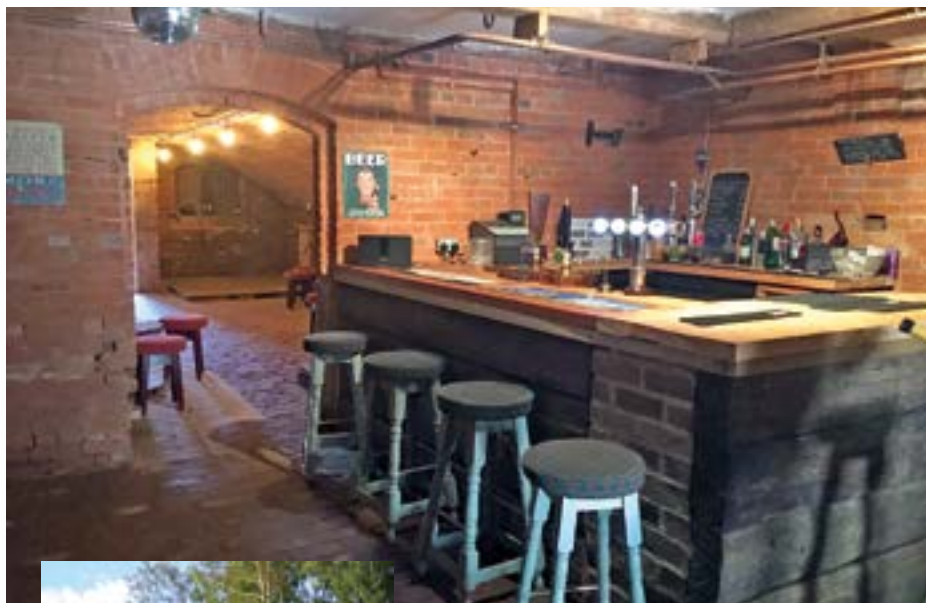
**Churchwardens Clifton:** Barbara Seeley 01886 812763 and Alana Cooper 01886 812520

**Churchwarden Lower Sapey:** Candy Connolly 01886 853248

**Churchwarden The Shelsleys:** Jane Froggatt 01886 812215

**Parish Email:** [cliftonrectory@wrrt.org.uk](mailto:cliftonrectory@wrrt.org.uk) **Website:** [www.wrrt.org.uk](http://www.wrrt.org.uk)

*'The White Pheasant – the Teme Valley's very own 'pop-up' pub.'*



## Your Local Agent since 1898

- ✔ Sale of low to high value residential property
- ✔ Expert advice given on values
- ✔ High quality marketing carried out on all properties
- ✔ Use of several websites to include Rightmove & Primelocation
- ✔ Free "no obligation" marketing appraisals
- ✔ Letting of all types of residential property
- ✔ Full Management or Let only service provided
- ✔ Sale of Agricultural, Commercial & Development property

For a more extensive range of our services visit [www.gherbertbanks.co.uk](http://www.gherbertbanks.co.uk)



T. 01299 896 968    ghb@gherbertbanks.co.uk  
F. 01299 896 981    www.gherbertbanks.co.uk  
The Estate Office   Hill House   Great Witley   Nr Worcester   WR6 6JB

Partners  
David G F Banks   FRICS FAAV  
Robert Parry   FRICS FAAV  
Richard G F Banks   MRICS

Associate Partner &  
Head of Residential Agency  
Tim Gaston BA



G Herbert Banks LLP is a Limited Liability Partnership.  
Registered in England & Wales.  
Registered Number OC344076. Regulated by RICS.

# The Village Stores

27 THE VILLAGE, CLIFTON-UPON-TEME WR6 6EN

**01886 812303**



Open 7am-7pm Mon-Fri   7am-6pm Saturday   9am-12 noon Sunday

Contributions for the next (November) edition by Friday, 10th October, 2017 please.

Printed by Orphans Press of Leominster Tel: 01568 612460