

CLIFTON FOUR ACRE FIELD UPDATE

The team working on the Four Acre Field Project in Clifton report on progress at the start of their consultation process. This is an ambitious plan to regenerate the recreation areas adjoining Pound Lane with money provided by the S106 funding from recent property developments.

With £250,000 allocated to the project there is considerable scope to enhance the excellent facilities already in place, providing a community facility for all, focusing on quality equipment, enabling biodiversity and ensuring acceptable maintenance costs. The images on the next pages show how the play, sports and social areas might be developed.

The team has gained a lot of knowledge over the past six months by speaking to potential contractors and various village groups gaining from their helpful guidance and comments. The project team benefits from including representatives of the various sports currently on the site as well as all age groups who will potentially use the facilities.

Teme Triangle (magazine and website) and the main village noticeboard will be used to keep everyone informed. Comments and observations throughout this period are welcomed. It is important for everyone to know that the current images may change as the project progresses and the team continues to listen and learn.

There is an email address cuts106play@gmail.com which can be used for feedback. There is also a postbox in the Village Stores for those without email who wish to provide feedback. All comments will form part of the consultation process and be added to those of the children, who have already been invaluable in helping to arrive at the images overleaf.

This is how we think the delivery timetable will develop:

July 2020: Start consultation process as widely as possible

October 2020: Submit plan to Parish Council and prepare application

December 2020: Submit s106 application to MHDC

February 2021: MHDC provides approval

March 2021: Commence groundwork

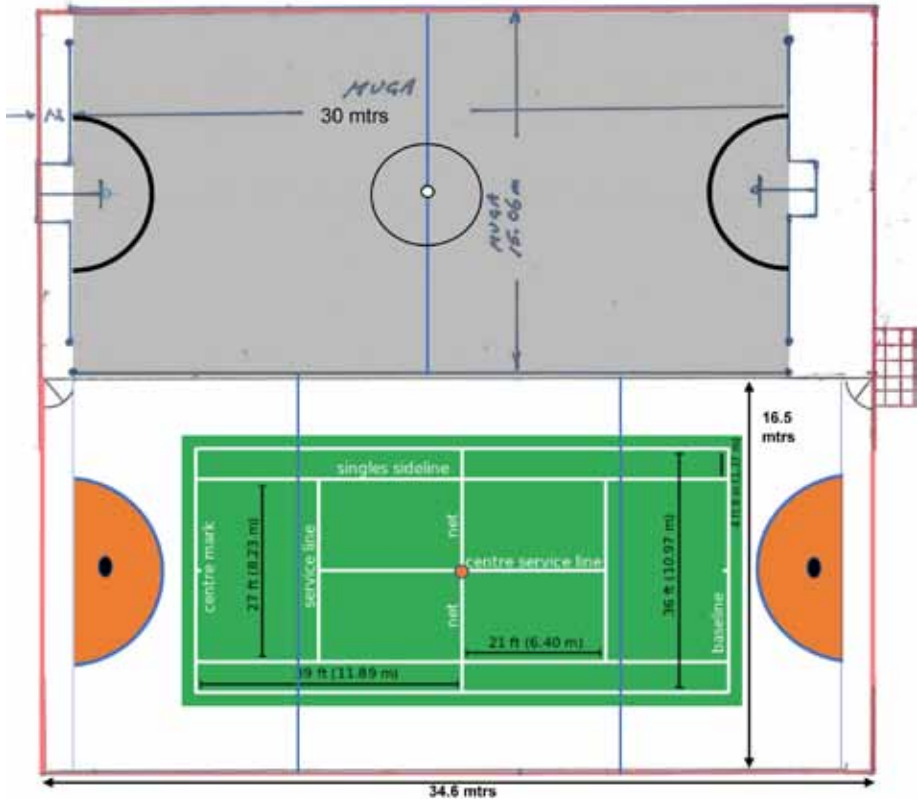
April 2021: Start sports, play and perimeter path installation

July 2021: Launch total facility



Site view showing play, sport and garden areas linked by the perimeter path.

Multi Use Games Area and Tennis Court with basketball & netball options.





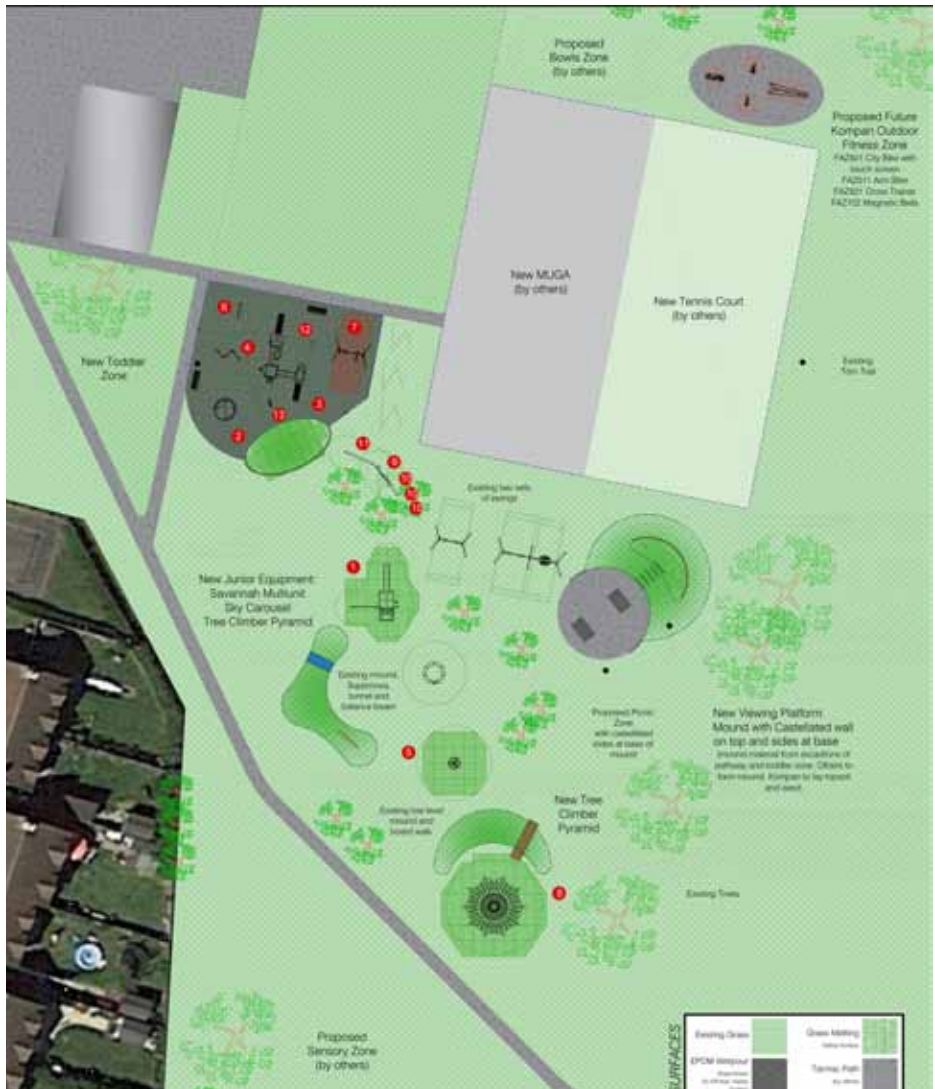
Clifton Junior Zone

This zone will have protective matting around all equipment, as well as social areas built into the landscaping such as raised mounds, seating etc.



Clifton Toddler Zone

This zone will also have grass mounds and seating as well as a safety surface for the whole zone.



Clifton Zones Overview

The Zones Overview illustrates the locations of new play equipment but the S106 monies will also be used to improve field drainage which will benefit the play areas and the soccer pitch. In addition the monies will provide an opportunity to rejuvenate the bowling green, support the community sensory garden and create other areas that might include adult fitness equipment and a boules court.