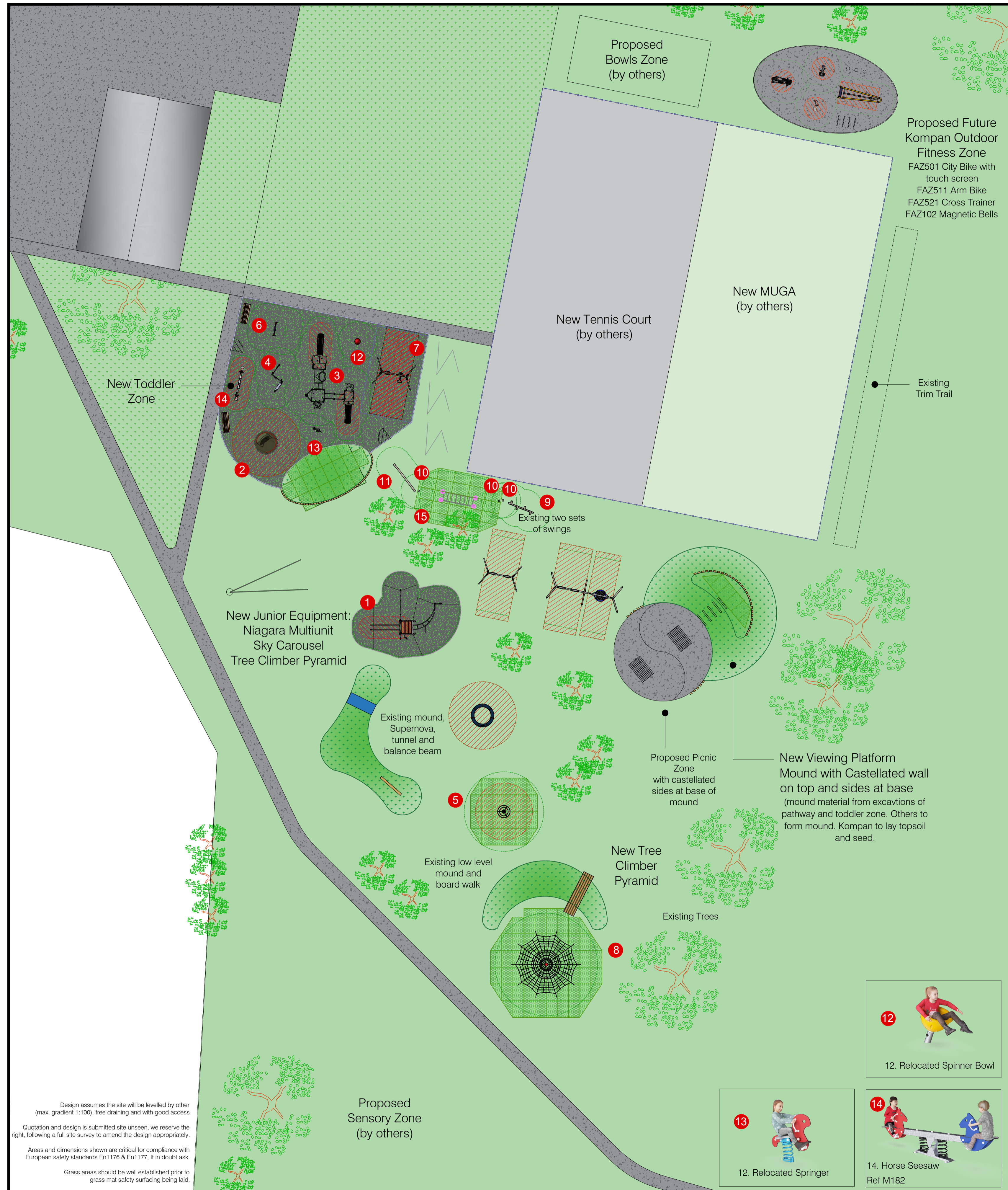


POUND LANE RECREATION AREA

Clifton Upon Teme Parish Council



1. Niagara Multi-Unit
Ref NAT527

2. Inclusive Carousel with Bars
Ref KPL122

3. Toddler Multiplay
Ref PCM300109-CUSTOM

4. Talk & Tumble
Ref PCM000310

5. Sky Carousel
Ref PCM151

6. Sunflower Swing
Ref PCM95172

7. You&Me & Cradle Swings
Ref KSW902-CUSTOM

8. Spire Net
Ref KPL803

9. Robinia Balance Plus
Ref NRO871

10. Robinia Stepping Pole
Ref NRO209

11. Robinia Balance Beam
Ref NRO802

12. Relocated Spinner Bowl

13. Relocated Springer

14. Horse Seesaw
Ref M182

15. Overhead Hang Bridge
Ref NRO-CUSTOM 891378

SURFACES

- Existing Grass
- EPDM Wetpour (Black/Green, 50.50Flex Safety Surface)
- Grass Matting (Safety Surface)
- Tarmac Path (by others)

Scale at 1:200

KOMPAN Let's play

KOMPAN Ltd.
21 Roebuck Way
Milton Keynes
MK5 8HL
www.KOMPAN.co.uk
T:01908 201002
F:01908 201007
E:KOMPAN.UK@KOMPAN.com

©copyright of this drawing remains the property of KOMPAN Ltd. and the KOMPAN group. This drawing may not be reproduced without prior permission of KOMPAN Ltd. Any infringement will be pursued.

Project POUND_LANE_RECREATION_AREA	Date 07/09/2020	Designed by R.B/S.K
Client CLIFTON_UPON_TEME_PARISH_COUNCIL	Revision 1:200@A1	Revision REV_A
Drawing No. CAS_55388-L8M5Y5_001		

Design assumes the site will be levelled by other (max. gradient 1:100), free draining and with good access

Quotation and design is submitted site unseen, we reserve the right, following a full site survey to amend the design appropriately.

Areas and dimensions shown are critical for compliance with European safety standards EN1176 & EN1177, if in doubt ask.

Grass areas should be well established prior to grass mat safety surfacing being laid.